

- ① BRASS MALE PIN
- ② MOULDED THERMOPLASTIC
- ③ CERTIFIED WIRING MATERIAL
- ④ RETAINING CLIP

WHERE "cc" REPRESENTS COLOUR CODE I.E. "BK" IS BLACK

**ACCEPTABLE FOR USE IN ENVIRONMENTAL AIR SPACES OTHER THAN DUCTS OR PLENUMS.
SYSTEM IS RATED FOR CONNECTION TO A GROUNDED 277/480V OR 347/600V BRANCH CIRCUIT.**

MEETS OR EXCEEDS: - CSA 22.2 NO. 182.3
- CSA 22.2 NO. 203.1
- UL 1977
- UL 183




277/480 OR 347/600 Volt 20 Amp

CDN. PATENT - 1219307

U.S. PATENT - 4775802

| ITEM | DESCRIPTION | PART#/POSITION | REMARKS |
|------|---------------------|----------------|---------------------|
| 3 | GREEN | 1 | GROUND |
| | BLACK/YELLOW TRACER | 2 | DEDICATED LINE |
| | WHITE | 3 | NEUTRAL |
| | RED | 4 | LINE CCT. 1/PHASE A |
| | BLACK | 5 | LINE CCT. 2/PHASE B |
| | BLUE | 6 | LINE CCT 3/PHASE C |
| | WHITE/YELLOW TRACER | 7 | DEDICATED NEUTRAL |
| | | | |
| | | | |
| | | | |
| | | | |
| | | | |
| | | | |
| | | | |



100-5977 HAZELDEAN ROAD, OTTAWA, ONTARIO, CANADA K2S 1B9
 TELEPHONE (613) 836-0300 FAX (613) 836-0391
 TOLL-FREE (866) 233-5328 FAX (866) 933-1933
 e-mail: support@electeonline.com

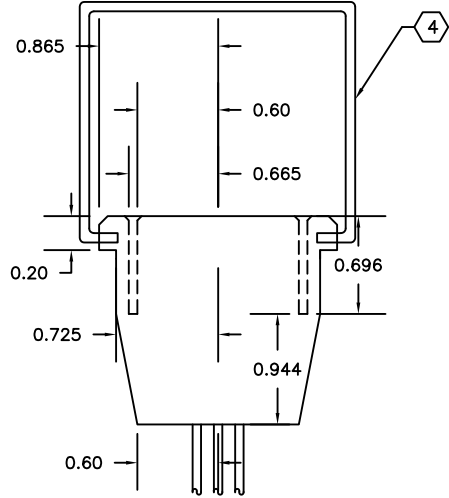
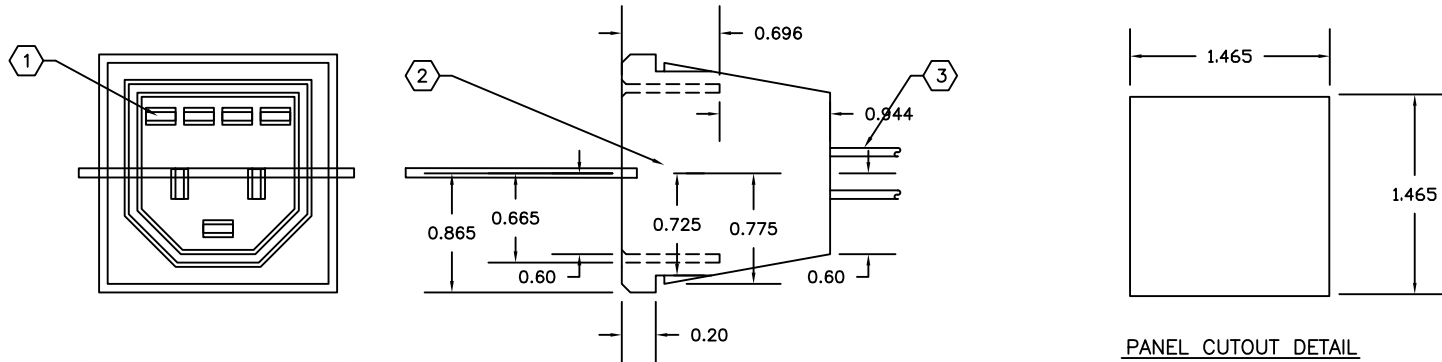
SINGLE PLUG

w7Pcc

| | | |
|--------------------|-------------------|-------|
| DRAWN BY: J.Y. | APPROVED: D.H. | w7P.3 |
| DATE: 21-OCT-08 | SCALE: N.T.S. | |

OWNERSHIP OF DOCUMENTS

This drawing and accompanying information as instrument of service are the property of **ELECTEC**.
 Reproduction or use in whole or in part in any form whether the work for which they are presented is executed or not is forbidden without the express written permission of **ELECTEC**.



- ① BRASS FEMALE TERMINAL
- ② MOULDED THERMOPLASTIC
- ③ CERTIFIED WIRING MATERIAL
- ④ RETAINING CLIP

WHERE "cc" REPRESENTS COLOUR CODE I.E. "BK" IS BLACK

**ACCEPTABLE FOR USE IN ENVIRONMENTAL AIR SPACES OTHER THAN DUCTS OR PLENUMS.
SYSTEM IS RATED FOR CONNECTION TO A GROUNDED 277/480V OR 347/600V BRANCH CIRCUIT.**

**MEETS OR EXCEEDS: - CSA 22.2 NO. 182.3
- CSA 22.2 NO. 203.1
- UL 1977
- UL 183**



277/480 OR 347/600 Volt 20 Amp

CDN. PATENT - 1219307

U.S. PATENT - 4775802

| ITEM | DESCRIPTION | PART#/POSITION | REMARKS |
|------|---------------------|----------------|---------------------|
| 3 | GREEN | 1 | GROUND |
| | BLACK/YELLOW TRACER | 2 | DEDICATED LINE |
| | WHITE | 3 | NEUTRAL |
| | RED | 4 | LINE CCT. 1/PHASE A |
| | BLACK | 5 | LINE CCT. 2/PHASE B |
| | BLUE | 6 | LINE CCT. 3/PHASE C |
| | WHITE/YELLOW TRACER | 7 | DEDICATED NEUTRAL |
| | | | |
| | | | |
| | | | |
| | | | |
| | | | |
| | | | |



100-5977 HAZELDEAN ROAD, OTTAWA, ONTARIO, CANADA K2S 1B9
 TELEPHONE (613) 836-0300 FAX (613) 836-0391
 TOLL-FREE (866) 233-5328 FAX (866) 933-1933
 e-mail: support@electeonline.com

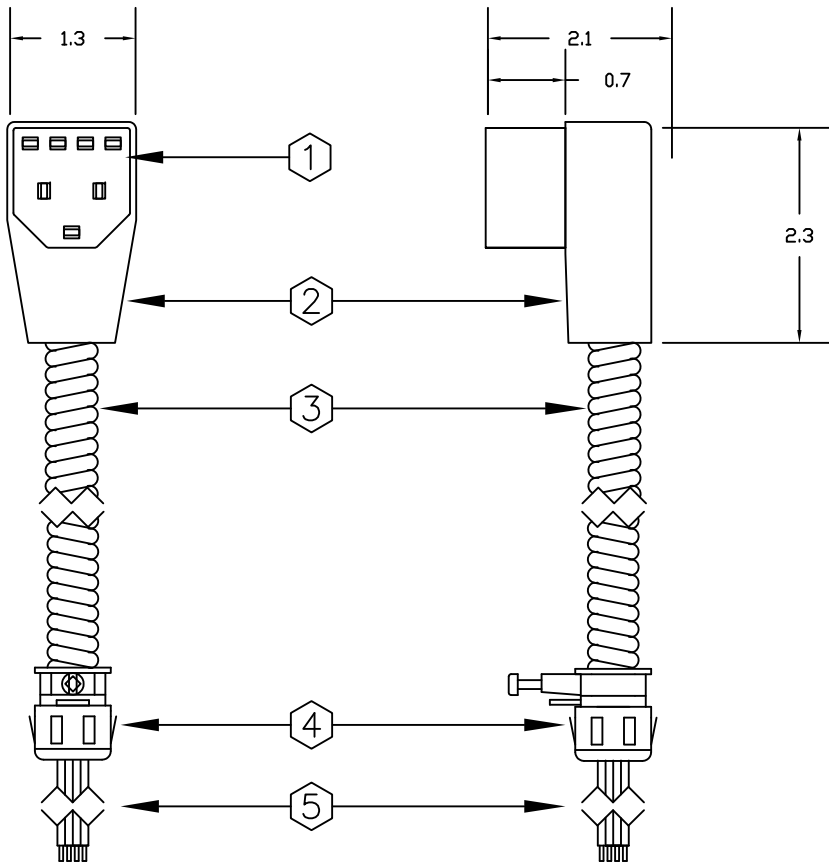
OWNERSHIP OF DOCUMENTS
 This drawing and accompanying information as instrument of service are the property of **ELECTEC**.
 Reproduction or use in whole or in part in any form whether the work for which they are presented is executed or not is forbidden without the express written permission of **ELECTEC**.

SINGLE RECEPTACLE

w7Rcc

| | |
|--------------------|-------------------|
| DRAWN BY: J.Y. | APPROVED: D.H. |
| DATE: 21-OCT-08 | SCALE: N.T.S. |

w7R.6



- ① BRASS TERMINAL
- ② MOULDED THERMOPLASTIC
- ③ "ULTRALX" AC90 LS 600V 90°C (CSA 22.2 No. 51-95)
- ④ LOCKNUTLESS BOX CONNECTOR 1/2" K.O.
- ⑤ TAILS WITH STRIPPED ENDS

WHERE "cc" REPRESENTS COLOUR CODE I.E. "BK" IS BLACK
 WHERE "d" REPRESENTS CERTIFIED WIRING MATERIAL I.E. "A" IS AC90
 WHERE "l" REPRESENTS LENGTH CODE I.E. "040" IS 04.0 METERS
 WHERE "w" REPRESENTS NUMBER OF WIRES FROM 3 TO 7

**SYSTEM IS RATED FOR CONNECTION TO A GROUNDED 277/480V OR 347/600V BRANCH CIRCUIT.
 MANUFACTURED WIRING SYSTEM UTILIZING 12 AWG APPROVED ULTRALX CABLE.
 INSTALLATION IN ACCORDANCE WITH THE CEC PART I.
 ACCEPTABLE FOR USE IN ENVIRONMENTAL AIR SPACES OTHER THAN DUCTS OR PLENUMS
 PER CEC PART I 12-010(3).
 MEETS OR EXCEEDS: - CSA 22.2 NO. 203.1**



277/480 OR 347/600 Volt 20 Amp

CDN. PATENT - 1219307

U.S. PATENT - 4775802

| ITEM | DESCRIPTION | PART#/POSITION | REMARKS |
|------|---------------------|----------------|-------------------|
| 3 | BARE | 1 | GROUND |
| | BLACK/YELLOW TRACER | 2 | DEDICATED LINE |
| | WHITE | 3 | NEUTRAL |
| | RED | 4 | PHASE A |
| | BLACK | 5 | PHASE B |
| | BLUE | 6 | PHASE C |
| | WHITE/YELLOW TRACER | 7 | DEDICATED NEUTRAL |
| | | | |
| | | | |
| | | | |
| | | | |
| | | | |
| | | | |
| | | | |
| | | | |



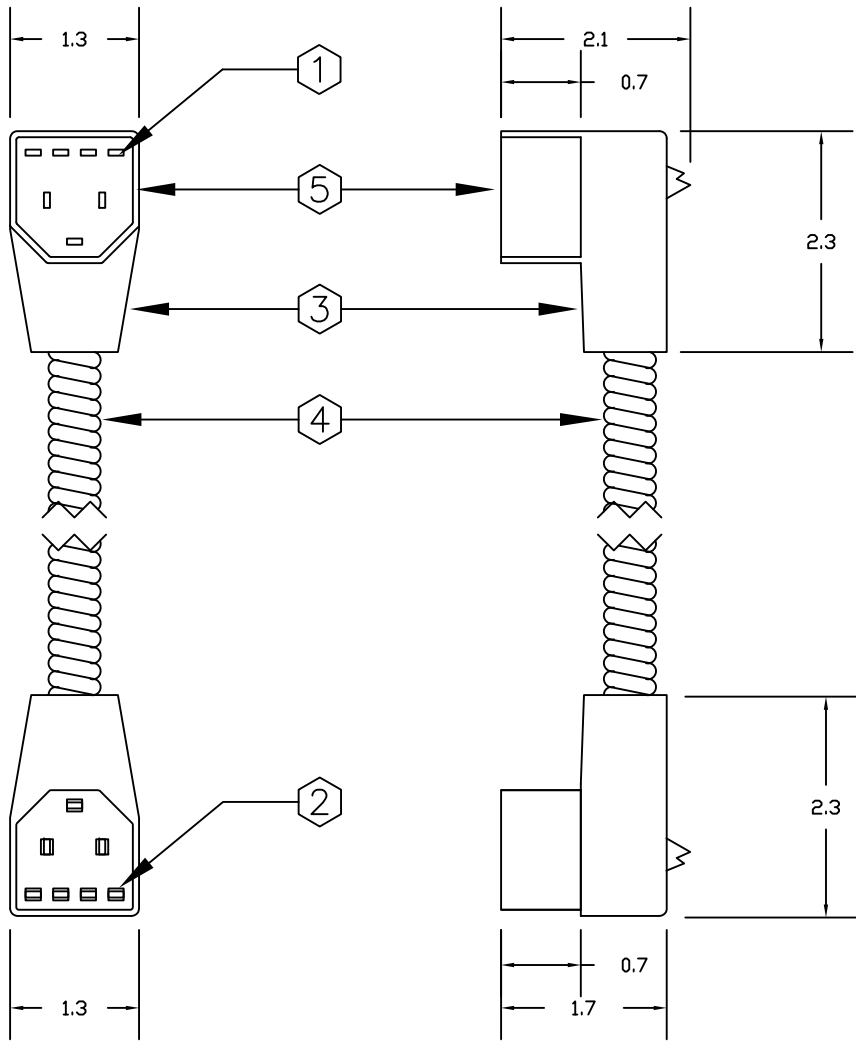
100-5977 HAZELDEAN ROAD, OTTAWA, ONTARIO, CANADA K2S 1B9
 TELEPHONE (613) 836-0300 FAX (613) 836-0391
 TOLL-FREE (866) 233-5328 FAX (866) 933-1933
 e-mail: support@electeonline.com

OWNERSHIP OF DOCUMENTS
 This drawing and accompanying information as instrument of service are the property of **ELECTEC**.
 Reproduction or use in whole or in part in any form whether the work for which they are presented be executed or not is forbidden without the express written permission of **ELECTEC**.

STARTER CABLE

w7FTccllld

| | | |
|--------------------|-------------------|--------|
| DRAWN BY: J.Y. | APPROVED: D.H. | w7FT.2 |
| DATE: 10-DEC-08 | SCALE: N.T.S. | |



- ① BRASS BLADE
- ② BRASS TERMINAL
- ③ MOULDED THERMOPLASTIC
- ④ "ULTRALX" AC90 LS 600V 90°C (CSA 22.2 No. 51-95)
- ⑤ SHROUD


WHERE "cc" REPRESENTS COLOUR CODE I.E. "BK" IS BLACK
 WHERE "d" REPRESENTS CERTIFIED WIRING MATERIAL I.E. "A" IS AC90
 WHERE "III" REPRESENTS LENGTH CODE I.E. "040" IS 04.0 METERS
 WHERE "w" REPRESENTS NUMBER OF WIRES FROM 3 TO 7

**SYSTEM IS RATED FOR CONNECTION TO A GROUNDED 277/480V OR 347/600V BRANCH CIRCUIT.
 MANUFACTURED WIRING SYSTEM UTILIZING 12 AWG APPROVED ULTRALX CABLE.
 INSTALLATION IN ACCORDANCE WITH THE CEC PART I.
 ACCEPTABLE FOR USE IN ENVIRONMENTAL AIR SPACES OTHER THAN DUCTS OR PLENUMS
 PER CEC PART I 12-010(3).
 MEETS OR EXCEEDS: - CSA 22.2 NO. 203.1**



277/480 OR 347/600 Volt 20 Amp
 CDN. PATENT - 1219307 U.S. PATENT - 4775802

| ITEM | DESCRIPTION | PART#/POSITION | REMARKS |
|------|---------------------|----------------|-------------------|
| 4 | BARE | 1 | GROUND |
| | BLACK/YELLOW TRACER | 2 | DEDICATED LINE |
| | WHITE | 3 | NEUTRAL |
| | RED | 4 | PHASE A |
| | BLACK | 5 | PHASE B |
| | BLUE | 6 | PHASE C |
| | WHITE/YELLOW TRACER | 7 | DEDICATED NEUTRAL |
| | | | |
| | | | |
| | | | |
| | | | |
| | | | |
| | | | |
| | | | |



100-5977 HAZELDEAN ROAD, OTTAWA, ONTARIO, CANADA K2S 1B9
 TELEPHONE (613) 836-0300 FAX (613) 836-0391
 TOLL-FREE (866) 233-5328 FAX (866) 933-1933
 e-mail: support@electeonline.com

OWNERSHIP OF DOCUMENTS

This drawing and accompanying information as instrument of service are the property of **ELECTEC**.
 Reproduction or use in whole or in part in any form whether the work for which they are presented be executed or not is forbidden without the express written permission of **ELECTEC**.

JOINER CABLE

w7MFccIIId

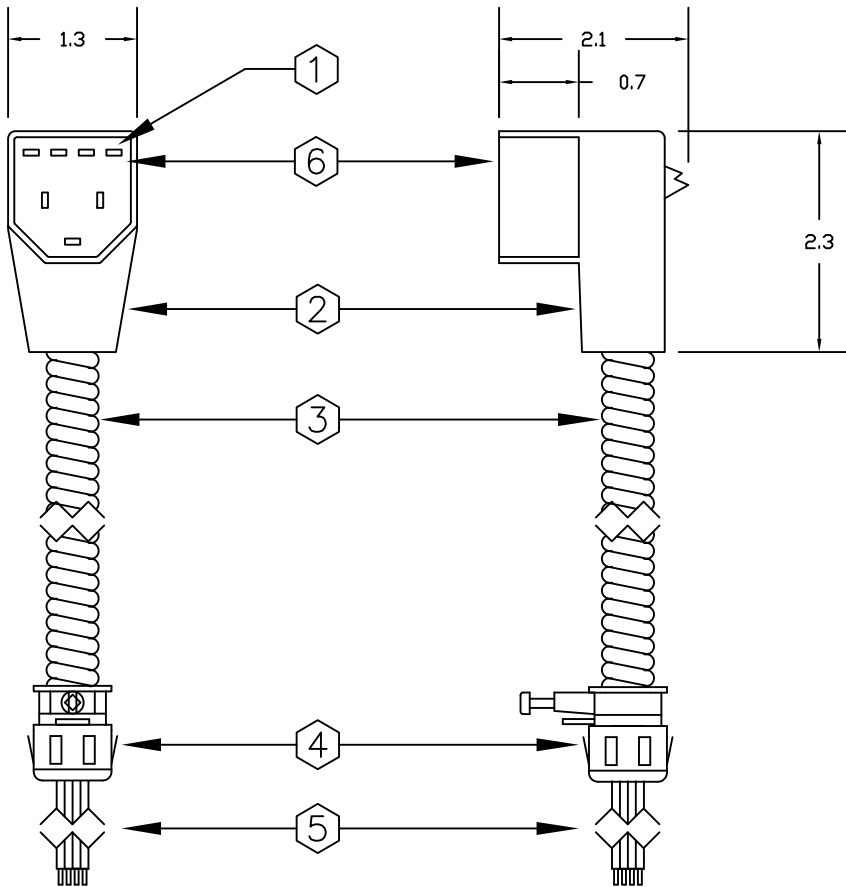
DRAWN BY:
J.Y.

APPROVED:
D.H.

w7MF.9

DATE:
10-DEC-08

SCALE:
N.T.S.



- ① BRASS BLADE
- ② MOULDED THERMOPLASTIC
- ③ "ULTRALX" AC90 LS 600V 90°C
(CSA 22.2 No. 51-95)
- ④ LOCKNUTLESS BOX CONNECTOR 1/2" K.O.
- ⑤ TAILS WITH STRIPPED ENDS
- ⑥ SHROUD

WHERE "cc" REPRESENTS COLOUR CODE I.E. "BK" IS BLACK
 WHERE "d" REPRESENTS CERTIFIED WIRING MATERIAL I.E. "A" IS AC90
 WHERE "III" REPRESENTS LENGTH CODE I.E. "040" IS 04.0 METERS
 WHERE "w" REPRESENTS NUMBER OF WIRES FROM 3 TO 7

**SYSTEM IS RATED FOR CONNECTION TO A GROUNDED 277/480V OR 347/600V BRANCH CIRCUIT.
 MANUFACTURED WIRING SYSTEM UTILIZING 12 AWG APPROVED ULTRALX CABLE.
 INSTALLATION IN ACCORDANCE WITH THE CEC PART I.
 ACCEPTABLE FOR USE IN ENVIRONMENTAL AIR SPACES OTHER THAN DUCTS OR PLENUMS
 PER CEC PART I 12-010(3).
 MEETS OR EXCEEDS: - CSA 22.2 NO. 203.1**



277/480 OR 347/600 Volt 20 Amp

CDN. PATENT - 1219307

U.S. PATENT - 4775802

| ITEM | DESCRIPTION | PART#/POSITION | REMARKS |
|------|---------------------|----------------|-------------------|
| 3 | BARE | 1 | GROUND |
| | BLACK/YELLOW TRACER | 2 | DEDICATED LINE |
| | WHITE | 3 | NEUTRAL |
| | RED | 4 | PHASE A |
| | BLACK | 5 | PHASE B |
| | BLUE | 6 | PHASE C |
| | WHITE/YELLOW TRACER | 7 | DEDICATED NEUTRAL |
| | | | |
| | | | |
| | | | |
| | | | |
| | | | |



100-5977 HAZELDEAN ROAD, OTTAWA, ONTARIO, CANADA K2S 1B9
 TELEPHONE (613) 836-0300 FAX (613) 836-0391
 TOLL-FREE (866) 233-5328 FAX (866) 933-1933
 e-mail: support@electeonline.com

OWNERSHIP OF DOCUMENTS

This drawing and accompanying information as instrument of service are the property of **ELECTEC**.
 Reproduction or use in whole or in part in any form whether the work for which they are presented be executed or not is forbidden without the express written permission of **ELECTEC**.

DROP CABLE

w7MTcclIId

| | | |
|--------------------|-------------------|--------|
| DRAWN BY: J.Y. | APPROVED: D.H. | w7MT.9 |
| DATE: 10-DEC-08 | SCALE: N.T.S. | |