

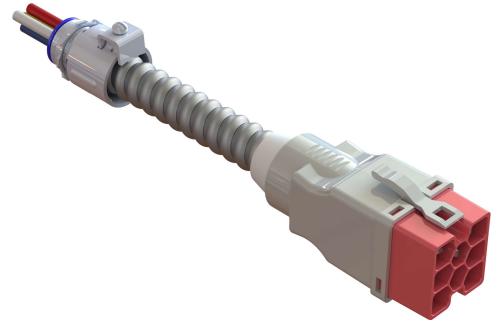
Drop Cable – Direct Current Variant

Provides connection to devices such as receptacles, switches, floor boxes, furniture and light fixtures.

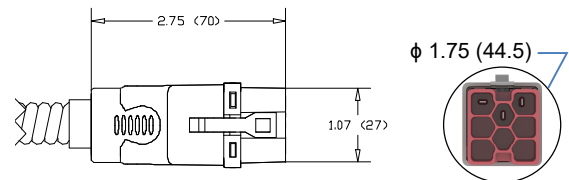
Power supply end has a male EZ-Wiring[®] connector. Free end has prepared wires & snap-in connector for field connection to load.

Features and Benefits:

- ELECTEC EZ-Wiring[®] components are UL Listed to be in compliance with UL 183 – Manufactured Wiring Systems (QQVX) and CSA Certified to be in compliance with CSA 22.2 No. 203-1 - Manufactured Wiring Systems.
- Constructed using ULTRALX[®] MC/AC90* cable (300lbs Tension), minimum 12AWG stranded conductors rated 600V 20A.
- Robust terminal design exceeds 470Amp for 4 seconds.
- EZ-Wiring[®] Connectors are integrally moulded (fully encapsulated) utilizing high impact Halogen-free, Eco-Friendly, Low Smoke, UL94-V0 rated, Oxygen Index - 33 %, RoHS-compliant polymers for superior strength, reliability and safety. Dielectric Withstand 3000Vac.
- Mating connectors are self-latching and shrouded for added protection.
- Uniquely keyed and colour-coded to clearly indicate ratings and provide safe, simple, error-free connectivity. Only connectors having identical colours can plug together properly.
- Approved “Ballast Disconnect Means” per NEC 410.73(g) and CEC Part 1 30-308(4).
- Suitable for use in environmental air handling spaces (plenums) per NEC 300-22(c) and CEC Part 1 12-010(3)
- Acceptable for interrupting current (make or break) under full load.



Ultra-Compact, multiple applications
 Consult EZ-Wiring[®] Configuration Matrix



Ordering Information

Catalogue No.;

1H – VC – PNGO – D III T



VC System

D2 = 60Vdc 20A, DD = 60Vdc 20A + Control

PNGO Application

Power Distribution

DALI/Class 1 (Control Wiring)

3w 1110 = (Pos.,Neg.,G)

5w 2210 = (2Pos.,2Neg.,G)

7w

1112 = 1 circuit + control (Pos.,Neg.,G,2C)

2212 = 2 circuit + control (2Pos.,2Neg.,G,2C)

III Cable Length (in dm)

e.g. 040 = 4.0m

T Cable Type

A = #12AC90/MC*, B = #12AC90, M = #12MC, U = #10AC90/MC*

Adhere to all Code requirements and carefully follow installation instructions

