



Smart Connect MWS Shop Drawings

Electec Ltd.
100-5977 Hazeldean Road
Stittsville (Ottawa), ON K2S 1B9
Tel (613) 836-0300 · TF (866) 233-5328
www.electeconline.com

"SMART CONNECT", "SMART LIGHT" AND "ULTRALX" ARE TRADE-MARKS OF ELECTEC LTD.

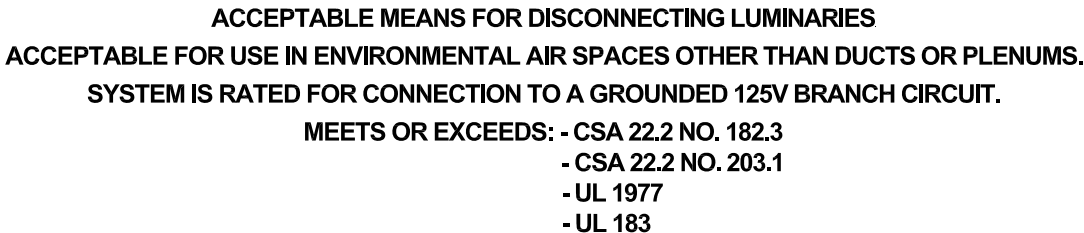
Table of Contents:

"100 Series"	Lighting	[125V 20A]	pg. 3-13
"100 Series"	Power	[125V 20A & 125/250V 20A]	pg. 14-19
"100 Series"	Lighting	[277V or 347V 20A]	pg. 20-29
"w2 Series"	Power (up to 9 wires)	[125/250V 20A]	pg. 30-34
"w4 Series"	Power (up to 9 wires)	[125/250V 20A]	pg. 35-39
"w6 Series"	Power (up to 5 wires)	[125/250V 20A]	pg. 40-47
"w7 Series"	Lighting (up to 7 wires)	[277/480V or 347/600V 20A]	pg. 48-52
"B" Enclosures			pg. 53
"E" Enclosures			pg. 54
ULTRALX Cable Assemblies			pg. 55
ULTRALX Dual-Listed AC90/MC Armoured Cable			pg. 56
ULTRALX AC90 Armoured Cable			pg. 57

Electec design and construct Manufactured Wiring Systems approved to stringent UL and CSA standards for use in the USA and Canada.

With 100% inspection and cutting edge manufacturing techniques, Electec delivers quality product on time and on budget.





U.S. PATENT - 4775802



OWNERSHIP OF DOCUMENTS

FIXTURE INTERCEPTOR

100125Flcc

APPROVED:
D.H.

SCALE:
N.T.S.

100125Fl.9

[illegible]

100-5977 HAZELDEAN ROAD, OTTAWA, ONTARIO, CANADA K2S 1B9
TELEPHONE (613) 836-0300 FAX (613) 836-0391
TOLL-FREE (866) 233-5328 FAX (866) 933-1933
e-mail: support@electeconline.com

OWNERSHIP OF DOCUMENTS

This drawing and accompanying information as instrument of service are the property of **ELECTEC**. Reproduction or use in whole or in part in any form whether the work for which they are presented be executed or not is forbidden without the express written permission of **ELECTEC**.

DUAL PLUG/RECEPTACLE

100125PTRTcc

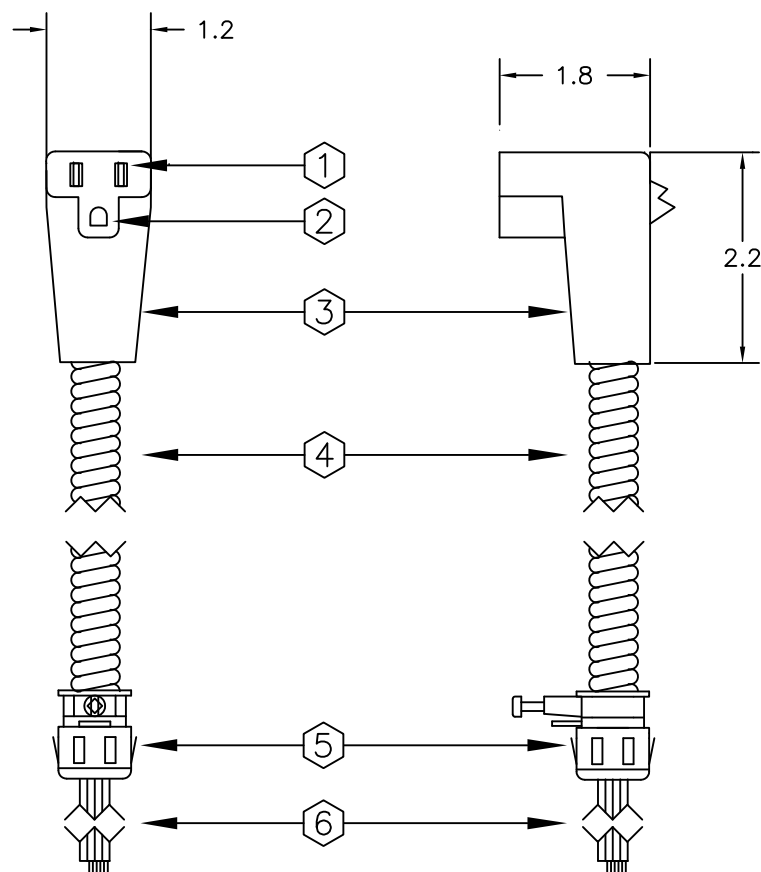
DRAWN BY:
J.Y.

APPROVED:
D.H.

DATE:
21-OCT-08

SCALE:
N.T.S.

100125PTRT.8



- ① BRASS TERMINAL
- ② BRASS GROUND TERMINAL
- ③ MOULDED THERMOPLASTIC
- ④ "ULTRALX" AC90 LS 600V 90°C
(CSA 22.2 No. 51-95)
- ⑤ LOCKNUTLESS BOX CONNECTOR 1/2" K.O.
- ⑥ TAIL WITH STRIPPED ENDS

WHERE "cc" REPRESENTS COLOUR CODE I.E. "BK" IS BLACK
WHERE "d" REPRESENTS CERTIFIED WIRING MATERIAL. I.E. "A" IS AC90
WHERE "l" REPRESENTS LENGTH CODE I.E. "040" IS 04.0 METERS

**SYSTEM IS RATED FOR CONNECTION TO A GROUNDED 125V BRANCH CIRCUIT.
MANUFACTURED WIRING SYSTEM UTILIZING 12 AWG APPROVED ULTRALX CABLE.
INSTALLATION IN ACCORDANCE WITH THE CEC PART I OR THE NEC.
ACCEPTABLE FOR USE IN ENVIRONMENTAL AIR SPACES OTHER THAN DUCTS OR PLENUMS
PER CEC PART I 12-010(3) OR NEC 300-22(C)
MEETS OR EXCEEDS: - CSA 22.2 NO. 203.1
- UL 183
ACCEPTABLE MEANS FOR DISCONNECTING LUMINARIES
PER CEC PART I 30-308(4) OR NEC 410.73(G).**

Manufactured
with
"AC90/MC"



Manufactured
with
"AC90"



Manufactured
with
"MC"



LR 91749

125 Volt 20 Amp

CDN. PATENT - 1219307

U.S. PATENT - 4775802

[illegible]

100-5977 HAZELDEAN ROAD, OTTAWA, ONTARIO, CANADA K2S 1B9
TELEPHONE (613) 836-0300 FAX (613) 836-0391
TOLL-FREE (866) 233-5328 FAX (866) 933-1933
e-mail: support@electeconline.com

OWNERSHIP OF DOCUMENTS

This drawing and accompanying information as instrument of service are the property of **ELECTEC**. Reproduction or use in whole or in part in any form whether the work for which they are presented is executed or not is forbidden without the express written permission of **ELECTEC**.

STARTER CABLE

101125SCSccIIId

DRAWN BY:
J.Y.

APPROVED:
D.H.

DATE:
27-NOV-08

SCALE:
N.T.S.

101125SCS.8

[illegible]

100-5977 HAZELDEAN ROAD, OTTAWA, ONTARIO, CANADA K2S 1B9
TELEPHONE (613) 836-0300 FAX (613) 836-0391
TOLL-FREE (866) 233-5328 FAX (866) 933-1933
e-mail: support@electeconline.com

OWNERSHIP OF DOCUMENTS

This drawing and accompanying information as instrument of service are the property of **ELECTEC**. Reproduction or use in whole or in part in any form whether the work for which they are presented is executed or not is forbidden without the express written permission of **ELECTEC**.

JOINER CABLE

102125JCSccIId

DRAWN BY:
J.Y.

APPROVED:
D.H.

DATE:
27-NOV-08

SCALE:
N.T.S.

102125JCS.8

[illegible]

100-5977 HAZELDEAN ROAD, OTTAWA, ONTARIO, CANADA K2S 1B9
TELEPHONE (613) 836-0300 FAX (613) 836-0391
TOLL-FREE (866) 233-5328 FAX (866) 933 1933
e-mail: support@electeonline.com

OWNERSHIP OF DOCUMENTS

This drawing and accompanying information as instrument of service are the property of **ELECTEC**. Reproduction or use in whole or in part in any form whether the work for which they are presented is executed or not is forbidden without the express written permission of **ELECTEC**.

DROP CABLE

102125JCSTccIId

DRAWN BY:
J.Y.

APPROVED:
D.H.

DATE:
27-NOV-08

SCALE:
N.T.S.

102125JCST.8

[illegible]

100-5977 HAZELDEAN ROAD, OTTAWA, ONTARIO, CANADA K2S 1B9
TELEPHONE (613) 836-0300 FAX (613) 836-0391
TOLL-FREE (866) 233-5328 FAX (866) 933-1933
e-mail: support@electeconline.com

OWNERSHIP OF DOCUMENTS

This drawing and accompanying information as instrument of service are the property of **ELECTEC**. Reproduction or use in whole or in part in any form whether the work for which they are presented be executed or not is forbidden without the express written permission of **ELECTEC**.

SWITCH TAP
103125SWlcc

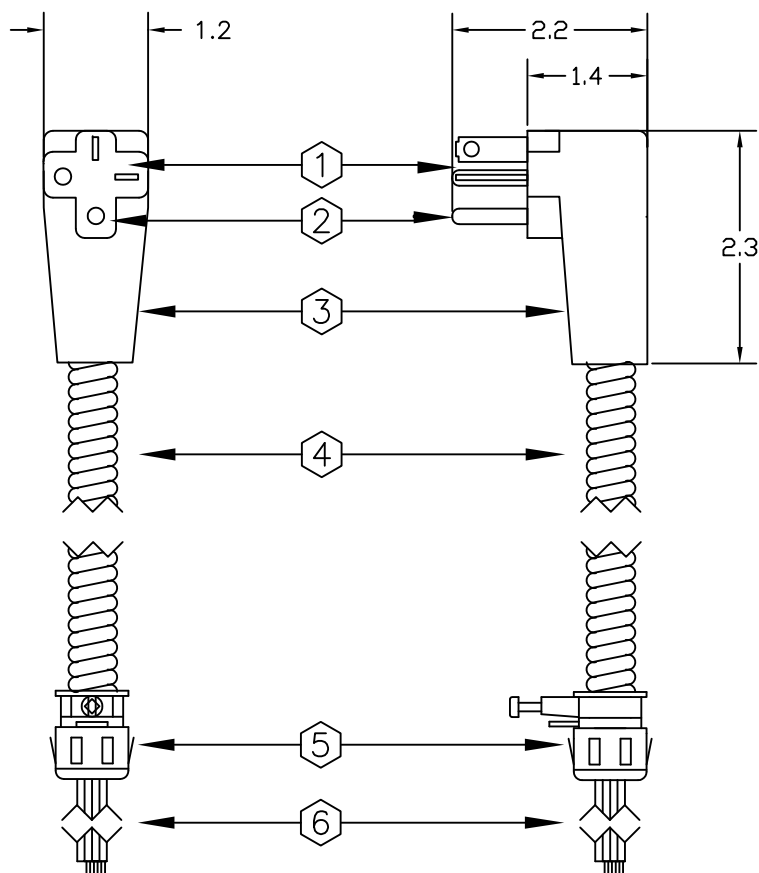
DRAWN BY:
J.Y.

APPROVED:
D.H.

DATE:
10-DEC-08

SCALE:
N.T.S.

103125SWI.8



- ① BRASS BLADE
- ② BRASS GROUND PIN
- ③ MOULDED THERMOPLASTIC
- ④ "ULTRALX" AC90/MC or AC90 or MC LS 600V 90°C
(CSA 22.2 No. 51-95 and UL 1569)
- ⑤ LOCKNUTLESS BOX CONNECTOR 1/2" K.O.
- ⑥ TAIL WITH STRIPPED ENDS

WHERE "cc" REPRESENTS COLOUR CODE I.E. "BK" IS BLACK
WHERE "d" REPRESENTS CERTIFIED WIRING MATERIAL. I.E. "A" IS AC90
WHERE "l" REPRESENTS LENGTH CODE I.E. "040" IS 04.0 METERS

SYSTEM IS RATED FOR CONNECTION TO A GROUNDED 125V BRANCH CIRCUIT.
MANUFACTURED WIRING SYSTEM UTILIZING 12 AWG APPROVED ULTRALX CABLE.
INSTALLATION IN ACCORDANCE WITH THE CEC PART I OR THE NEC.
ACCEPTABLE FOR USE IN ENVIRONMENTAL AIR SPACES OTHER THAN DUCTS OR PLENUMS
PER CEC PART I 12-010(3) OR NEC 300-22(C)
MEETS OR EXCEEDS: - CSA 22.2 NO. 203.1
- UL 183

Manufactured
with
"AC90/MC"



Manufactured
with
"AC90"



LR 91749

Manufactured
with
"MC"



125 Volt 20 Amp

CDN. PATENT - 1219307

U.S. PATENT - 4775802

[illegible]

100-3977 HAZELDEAN ROAD, OTTAWA, ONTARIO, CANADA K2S 1B9
TELEPHONE (613) 836-0300 FAX (613) 836-0391
TOLL-FREE (866) 233-5328 FAX (866) 933-1933
e-mail: support@electeconline.com

OWNERSHIP OF DOCUMENTS

This drawing and accompanying information as instrument of service are the property of **ELECTEC**. Reproduction or use in whole or in part in any form whether the work for which they are presented is executed or not is forbidden without the express written permission of **ELECTEC**.

SWITCH CABLE

104125SWCSccIIId

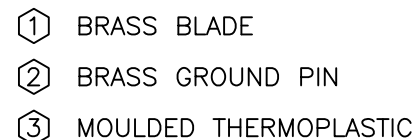
DRAWN BY:
J.Y.

APPROVED:
D.H.

DATE:
27-NOV-08

SCALE:
N.T.S.

104125SWCS.3




SYSTEM IS RATED FOR CONNECTION TO A GROUNDED 125V BRANCH CIRCUIT.
MANUFACTURED WIRING SYSTEM UTILIZING 12 AWG APPROVED ULTRALX CABLE.
INSTALLATION IN ACCORDANCE WITH THE CEC PART I OR THE NEC.
ACCEPTABLE FOR USE IN ENVIRONMENTAL AIR SPACES OTHER THAN DUCTS OR PLENUMS
PER CEC PART I 12-010(3) OR NEC 300-22(C)
MEETS OR EXCEEDS: - CSA 22.2 NO. 203.1
- UL 183



125 Volt 20 Amp

U.S. PATENT - 4775802

 ELECTEC		100-5977 HAZELDEAN ROAD, OTTAWA, ONTARIO, CANADA K2S 1B9 TELEPHONE (613) 836-0300 FAX (613) 836-0391 TOLL-FREE (866) 233-5328 FAX (866) 933-1933 e-mail: support@electeonline.com	
<p align="center">OWNERSHIP OF DOCUMENTS</p> <p>This drawing and accompanying information as instrument of service are the property of ELECTEC. Reproduction or use in whole or in part in any form whether the work for which they are presented is executed or not is forbidden without the express written permission of ELECTEC.</p>		<p align="center">BLANKING PLUG</p> <p align="center">105125BPcc</p>	
		DRAWN BY: J.Y.	APPROVED: D.H.
		DATE: 27-NOV-08	SCALE: N.T.S.
		105125BP.6	

[illegible]

100-5977 HAZELDEAN ROAD, OTTAWA, ONTARIO, CANADA K2S 1B9
TELEPHONE (613) 836-0300 FAX (613) 836-0391
TOLL-FREE (866) 233-5328 FAX (866) 933-1933
e-mail: support@electeconline.com

OWNERSHIP OF DOCUMENTS

This drawing and accompanying information as instrument of service are the property of **ELECTEC**. Reproduction or use in whole or in part in any form whether the work for which they are presented be executed or not is forbidden without the express written permission of **ELECTEC**.

MULTI TAP

107125TAPcc

DRAWN BY:
J.Y.

APPROVED:
D.H.

DATE:
10-DEC-08

SCALE:
N.T.S.

107125TAP.8

[illegible]

100-5977 HAZELDEAN ROAD, OTTAWA, ONTARIO, CANADA K2S 1B9
TELEPHONE (613) 836-0300 FAX (613) 836-0391
TOLL-FREE (866) 233-5328 FAX (866) 933-1933
e-mail: support@electeonline.com

OWNERSHIP OF DOCUMENTS

This drawing and accompanying information as instrument of service are the property of **ELECTEC**. Reproduction or use in whole or in part in any form whether the work for which they are presented be executed or not is forbidden without the express written permission of **ELECTEC**.

DUAL RECEPTACLE

10042RTRTcc

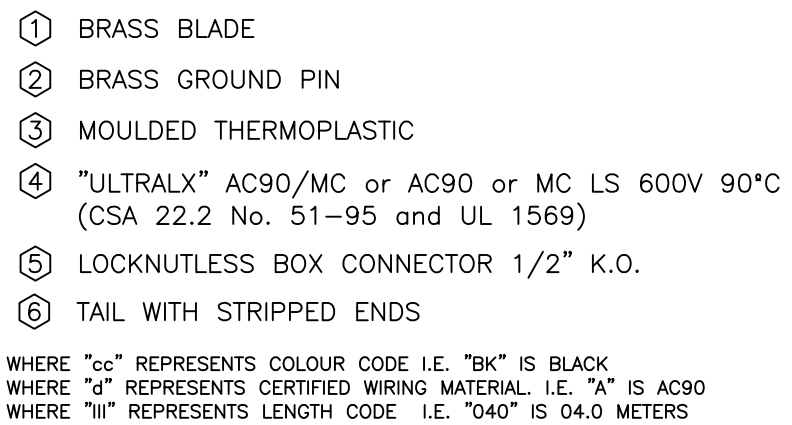
DRAWN BY:
J.Y.

APPROVED:
D.H.

DATE:
21-OCT-08


SCALE:
N.T.S.

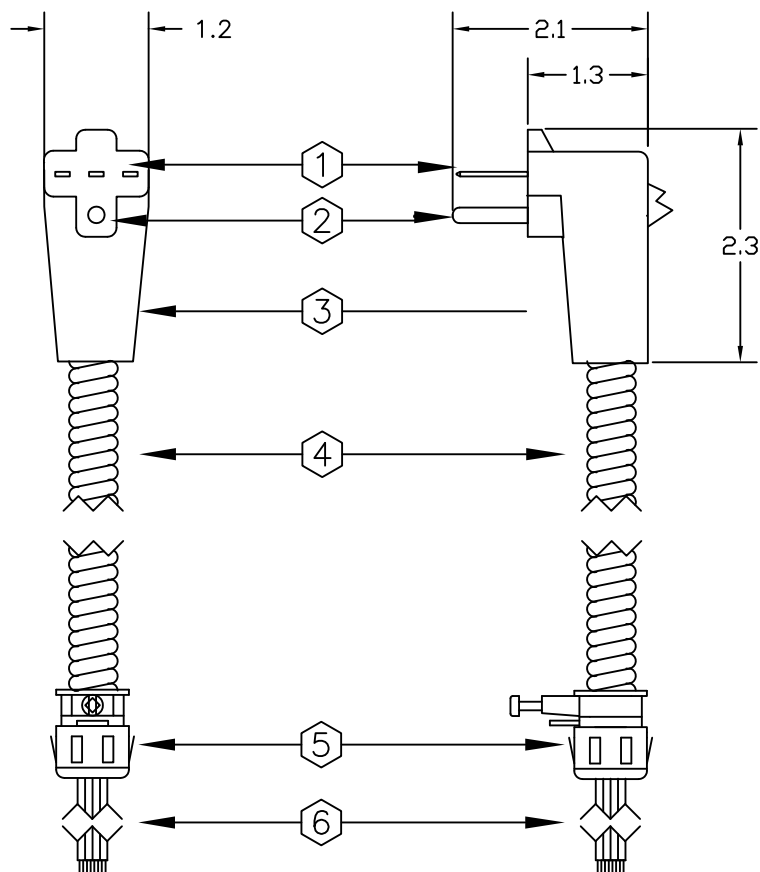
10042RTRT.9



Manufactured with "AC90/MC"	Manufactured with "AC90"	Manufactured with "MC"
		

CDN. PATENT - 1219307 U.S. PATENT - 4775802

 ELECTEC		100-5977 HAZELDEAN ROAD, OTTAWA, ONTARIO, CANADA K2S 1B9 TELEPHONE (613) 836-0300 FAX (613) 836-0391 TOLL-FREE (866) 233-5328 FAX (866) 933-1933 e-mail: support@electeonline.com	
<p align="center">OWNERSHIP OF DOCUMENTS</p> <p>This drawing and accompanying information as instrument of service are the property of ELECTEC. Reproduction or use in whole or in part in any form whether the work for which they are presented is executed or not is forbidden without the express written permission of ELECTEC.</p>		<p align="center">DROP CABLE</p> <p align="center">11031MTccIIId</p>	
		DRAWN BY: J.Y.	APPROVED: D.H.
		DATE: 27-NOV-08	SCALE: N.T.S.
		<p align="center">11031MT.7</p>	



- ① BRASS BLADE
- ② BRASS GROUND PIN
- ③ MOULDED THERMOPLASTIC
- ④ "ULTRALX" AC90/MC or AC90 or MC LS 600V 90°C
(CSA 22.2 No. 51-95 and UL 1569)
- ⑤ LOCKNUTLESS BOX CONNECTOR 1/2" K.O.
- ⑥ TAIL WITH STRIPPED ENDS

WHERE "cc" REPRESENTS COLOUR CODE I.E. "BK" IS BLACK
WHERE "d" REPRESENTS CERTIFIED WIRING MATERIAL. I.E. "A" IS AC90
WHERE "l" REPRESENTS LENGTH CODE I.E. "040" IS 04.0 METERS

SYSTEM IS RATED FOR CONNECTION TO A GROUNDED 125V BRANCH CIRCUIT.
MANUFACTURED WIRING SYSTEM UTILIZING 12 AWG APPROVED ULTRALX CABLE.
INSTALLATION IN ACCORDANCE WITH THE CEC PART I OR THE NEC.
ACCEPTABLE FOR USE IN ENVIRONMENTAL AIR SPACES OTHER THAN DUCTS OR PLENUMS
PER CEC PART I 12-010(3) OR NEC 300-22(C)
MEETS OR EXCEEDS: - CSA 22.2 NO. 203.1
- UL 183

Manufactured
with
"AC90/MC"



Manufactured
with
"AC90"



LR 91749

Manufactured
with
"MC"



L

125 Volt 20 Amp

CDN. PATENT - 1219307

U.S. PATENT - 4775802

[illegible]

100-5977 HAZELDEAN ROAD, OTTAWA, ONTARIO, CANADA K2S 1B9
TELEPHONE (613) 836-0300 FAX (613) 836-0391
TOLL-FREE (866) 233-5328 FAX (866) 933-1933
e-mail: support@electeconline.com

OWNERSHIP OF DOCUMENTS

This drawing and accompanying information as instrument of service are the property of **ELECTEC**. Reproduction or use in whole or in part in any form whether the work for which they are presented is executed or not is forbidden without the express written permission of **ELECTEC**.

DROP CABLE

11141MTccIIId

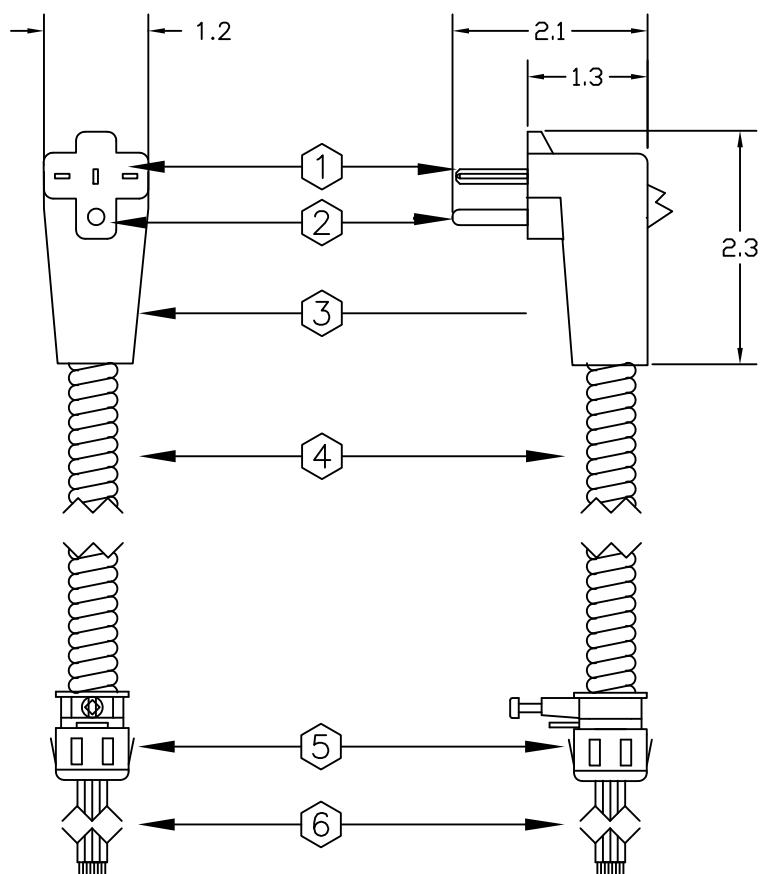
DRAWN BY:
J.Y.

APPROVED:
D.H.

DATE:
27-NOV-08

SCALE:
N.T.S.

11141MT.9



- ① BRASS BLADE
- ② BRASS GROUND PIN
- ③ MOULDED THERMOPLASTIC
- ④ "ULTRALX" AC90/MC or AC90 or MC LS 600V 90°C
(CSA 22.2 No. 51-95 and UL 1569)
- ⑤ LOCKNUTLESS BOX CONNECTOR 1/2" K.O.
- ⑥ TAIL WITH STRIPPED ENDS

WHERE "cc" REPRESENTS COLOUR CODE I.E. "BK" IS BLACK
WHERE "d" REPRESENTS CERTIFIED WIRING MATERIAL. I.E. "A" IS AC90
WHERE "l" REPRESENTS LENGTH CODE I.E. "040" IS 04.0 METERS

SYSTEM IS RATED FOR CONNECTION TO A GROUNDED 125/250V BRANCH CIRCUIT.
MANUFACTURED WIRING SYSTEM UTILIZING 12 AWG APPROVED ULTRALX CABLE.
INSTALLATION IN ACCORDANCE WITH THE CEC PART I OR THE NEC.
ACCEPTABLE FOR USE IN ENVIRONMENTAL AIR SPACES OTHER THAN DUCTS OR PLENUMS
PER CEC PART I 12-010(3) OR NEC 300-22(C)
MEETS OR EXCEEDS: - CSA 22.2 NO. 203.1
- UL 183

Manufactured
with
"AC90/MC"



Manufactured
with
"AC90"



Manufactured
with
"MC"



LR 91749

125/250 Volt 20 Amp

CDN. PATENT - 1219307

U.S. PATENT - 4775802

[illegible]

100-5977 HAZELDEAN ROAD, OTTAWA, ONTARIO, CANADA K2S 1B9
TELEPHONE (613) 836-0300 FAX (613) 836-0391
TOLL-FREE (866) 233-5328 FAX (866) 933-1933
e-mail: support@electeconline.com

OWNERSHIP OF DOCUMENTS

This drawing and accompanying information as instrument of service are the property of **ELECTEC**. Reproduction or use in whole or in part in any form whether the work for which they are presented is executed or not is forbidden without the express written permission of **ELECTEC**.

DROP CABLE

11242MTccIIId

DRAWN BY:
J.Y.

APPROVED:
D.H.

DATE:
27-NOV-08

SCALE:
N.T.S.

11242MT.9

[illegible]

100-5977 HAZELDEAN ROAD, OTTAWA, ONTARIO, CANADA K2S 1B9
TELEPHONE (613) 836-0300 FAX (613) 836-0391
TOLL-FREE (866) 233-5328 FAX (866) 933-1933
e-mail: support@electeconline.com

OWNERSHIP OF DOCUMENTS

This drawing and accompanying information as instrument of service are the property of **ELECTEC**. Reproduction or use in whole or in part in any form whether the work for which they are presented be executed or not is forbidden without the express written permission of **ELECTEC**.

FIXTURE INTERCEPTOR

100347Flcc

DRAWN BY:
J.Y.

APPROVED:
D.H.

DATE:
21-OCT-08

SCALE:
N.T.S.

100347FI.9

[illegible]

100-5977 HAZELDEAN ROAD, OTTAWA, ONTARIO, CANADA K2S 1B9
TELEPHONE (613) 836-0300 FAX (613) 836-0391
TOLL-FREE (866) 233-5328 FAX (866) 933-1933
e-mail: support@electeconline.com

OWNERSHIP OF DOCUMENTS

This drawing and accompanying information as instrument of service are the property of **ELECTEC**. Reproduction or use in whole or in part in any form whether the work for which they are presented be executed or not is forbidden without the express written permission of **ELECTEC**.

DUAL PLUG/RECEPTACLE

100347PTRTcc

DRAWN BY:
J.Y.

APPROVED:
D.H.

DATE:
21-OCT-08

SCALE:
N.T.S.

100347PTRT.8

[illegible]

100-5977 HAZELDEAN ROAD, OTTAWA, ONTARIO, CANADA K2S 1B9
TELEPHONE (613) 836-0300 FAX (613) 836-0391
TOLL-FREE (866) 233-5328 FAX (866) 933-1933
e-mail: support@electeconline.com

OWNERSHIP OF DOCUMENTS

This drawing and accompanying information as instrument of service are the property of **ELECTEC**. Reproduction or use in whole or in part in any form whether the work for which they are presented be executed or not is forbidden without the express written permission of **ELECTEC**.

DUAL RECEPTACLE

100347RTRTcc

DRAWN BY:
J.Y.

APPROVED:
D.H.

DATE:
21-OCT-08

SCALE:
N.T.S.

100347RTRT.9

[illegible]

100-5977 HAZELDEAN ROAD, OTTAWA, ONTARIO, CANADA K2S 1B9
TELEPHONE (613) 836-0300 FAX (613) 836-0391
TOLL-FREE (866) 233-5328 FAX (866) 933-1933
e-mail: support@electeconline.com

OWNERSHIP OF DOCUMENTS

This drawing and accompanying information as instrument of service are the property of **ELECTEC**. Reproduction or use in whole or in part in any form whether the work for which they are presented is executed or not is forbidden without the express written permission of **ELECTEC**.

STARTER CABLE

101347SCScclld

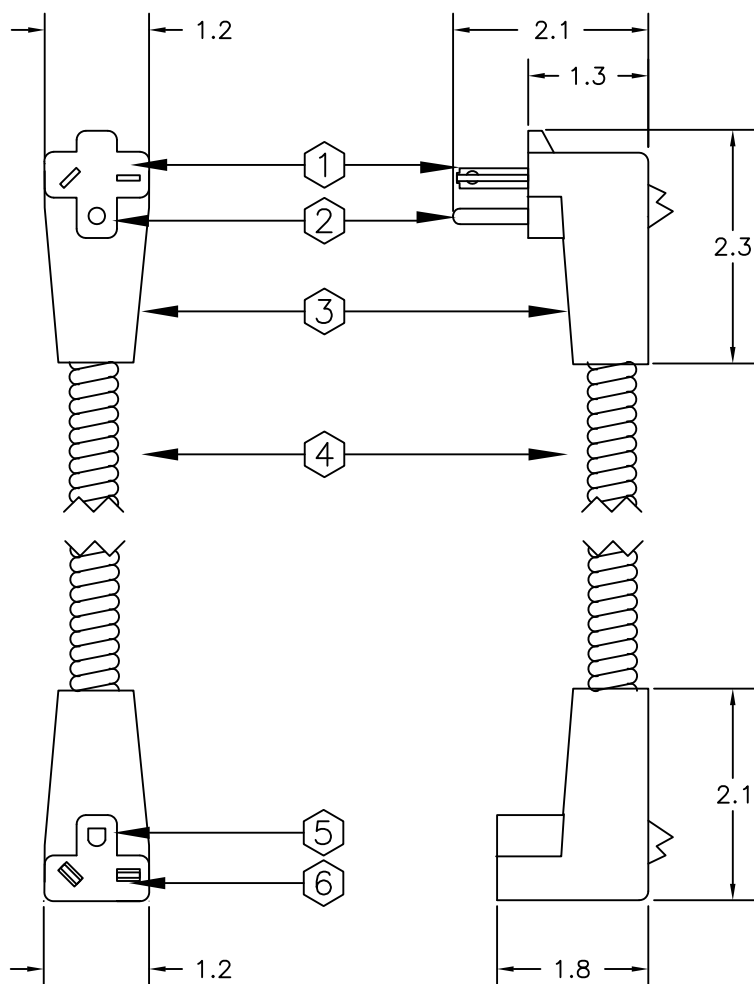
DRAWN BY:
J.Y.

APPROVED:
D.H.

DATE:
27-NOV-08

SCALE:
N.T.S.

101347SCS.8



- ① BRASS BLADE
- ② BRASS GROUND PIN
- ③ MOULDED THERMOPLASTIC
- ④ "ULTRALX" AC90/MC or AC90 or MC LS 600V 90°C
(CSA 22.2 No. 51-95 and UL 1569)
- ⑤ BRASS GROUND TERMINAL
- ⑥ BRASS TERMINAL

WHERE "cc" REPRESENTS COLOUR CODE I.E. "BK" IS BLACK
WHERE "d" REPRESENTS CERTIFIED WIRING MATERIAL. I.E. "A" IS AC90
WHERE "l" REPRESENTS LENGTH CODE I.E. "040" IS 04.0 METERS

SYSTEM IS RATED FOR CONNECTION TO A GROUNDED 277V OR 347V BRANCH CIRCUIT.

MANUFACTURED WIRING SYSTEM UTILIZING 12 AWG APPROVED ULTRALX CABLE.

INSTALLATION IN ACCORDANCE WITH THE CEC PART I OR THE NEC.

**ACCEPTABLE FOR USE IN ENVIRONMENTAL AIR SPACES OTHER THAN DUCTS OR PLENUMS
PER CEC PART 12-010(3) OR NEC 300-22(C)**

**MEETS OR EXCEEDS: - CSA 22.2 NO. 203.1
- UL 183**

**ACCEPTABLE MEANS FOR DISCONNECTING LUMINARIES
PER CEC PART I 30-308(4) OR NEC 410.73(G).**

Manufactured
with
"AC90/MC"



Manufactured
with
"AC90"



LR 91749

Manufactured
with
"MC"



277 OR 347 Volt 20 Amp

CDN. PATENT - 1219307

U.S. PATENT - 4775802

[illegible]

100-5977 HA ELDEAN ROAD, OTTAWA, ONTARIO, CANADA K2S 1B9
TELEPHONE (613) 836-0300 FAX (613) 836-0391
TOLL-FREE (866) 233-5328 FAX (866) 933-1933
e-mail: support@electeconline.com

OWNERSHIP OF DOCUMENTS

This drawing and accompanying information as instrument of service are the property of **ELECTEC**. Reproduction or use in whole or in part in any form whether the work for which they are presented is executed or not is forbidden without the express written permission of **ELECTEC**.

JOINER CABLE

102347JCScc|||d

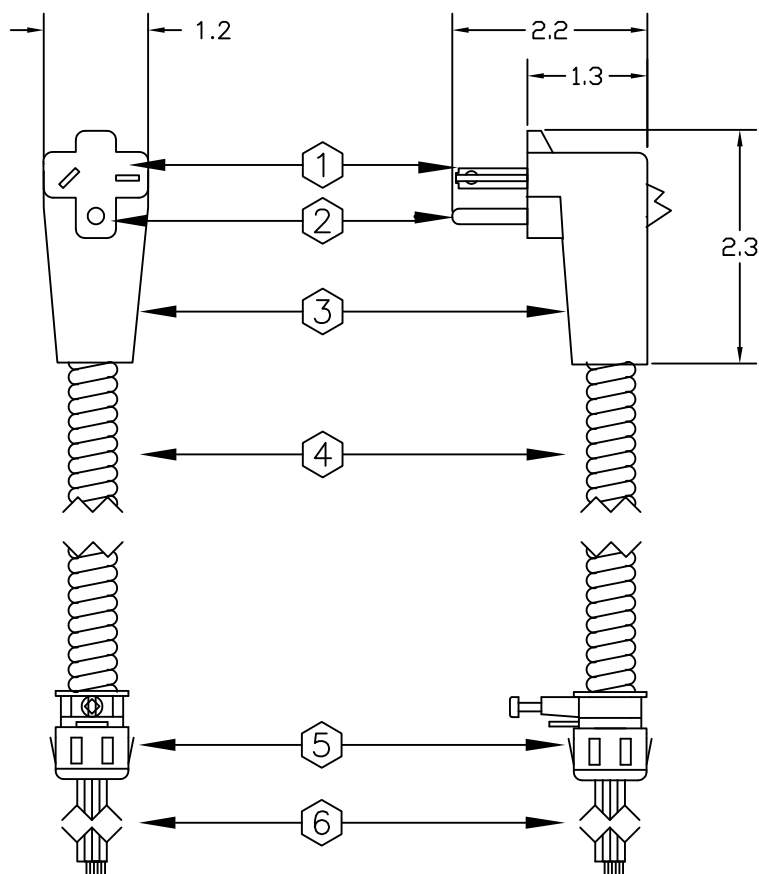
DRAWN BY:
J.Y.

APPROVED:
D.H.

DATE:
27-NOV-08

SCALE:
N.T.S.

102347JCS.8



- ① BRASS BLADE
- ② BRASS GROUND PIN
- ③ MOULDED THERMOPLASTIC
- ④ "ULTRALX" AC90/MC or AC90 or MC LS 600V 90°C
(CSA 22.2 No. 51-95 and UL 1569)
- ⑤ LOCKNUTLESS BOX CONNECTOR 1/2" K.O.
- ⑥ TAIL WITH STRIPPED ENDS

WHERE "cc" REPRESENTS COLOUR CODE I.E. "BK" IS BLACK
WHERE "d" REPRESENTS CERTIFIED WIRING MATERIAL. I.E. "A" IS AC90
WHERE "l" REPRESENTS LENGTH CODE I.E. "040" IS 04.0 METERS

SYSTEM IS RATED FOR CONNECTION TO A GROUNDED 277V OR 347V BRANCH CIRCUIT.

MANUFACTURED WIRING SYSTEM UTILIZING 12 AWG APPROVED ULTRALX CABLE.

INSTALLATION IN ACCORDANCE WITH THE CEC PART I OR THE NEC.

**ACCEPTABLE FOR USE IN ENVIRONMENTAL AIR SPACES OTHER THAN DUCTS OR PLENUMS
PER CEC PART 12-010(3) OR NEC 300-22(C)**

**MEETS OR EXCEEDS: - CSA 22.2 NO. 203.1
- UL 183**

**ACCEPTABLE MEANS FOR DISCONNECTING LUMINARIES
PER CEC PART I 30-308(4) OR NEC 410.73(G).**

Manufactured
with
"AC90/MC"



Manufactured
with
"AC90"



LR 91749

Manufactured
with
"MC"



277 OR 347 Volt 20 Amp

CDN. PATENT - 1219307

U.S. PATENT - 4775802

[illegible]

100-5977 HAZELDEAN ROAD, OTTAWA, ONTARIO, CANADA K2S 1B9
TELEPHONE (613) 836-0300 FAX (613) 836-0391
TOLL-FREE (866) 233-5328 FAX (866) 933-1933
e-mail: support@electeconline.com

OWNERSHIP OF DOCUMENTS

This drawing and accompanying information as instrument of service are the property of **ELECTEC**. Reproduction or use in whole or in part in any form whether the work for which they are presented is executed or not is forbidden without the express written permission of **ELECTEC**.

DROP CABLE

102347JCSTccIIId

DRAWN BY:
J.Y.

APPROVED:
D.H.

DATE:
27-NOV-08

SCALE:
N.T.S.

102347JCST.9

ITEM	DESCRIPTION			



100-5977 HAZELDEAN ROAD, OTTAWA, ONTARIO, CANADA K2S 1B9
TELEPHONE (613) 836-0300 FAX (613) 836-0391
TOLL-FREE (866) 233-5328 FAX (866) 933-1933
e-mail: support@electeconline.com

OWNERSHIP OF DOCUMENTS

This drawing and accompanying information as instrument of service are the property of **ELECTEC**. Reproduction or use in whole or in part in any form whether the work for which they are presented be executed or not is forbidden without the express written permission of **ELECTEC**.

SWITCH TAP

103347SWlcc

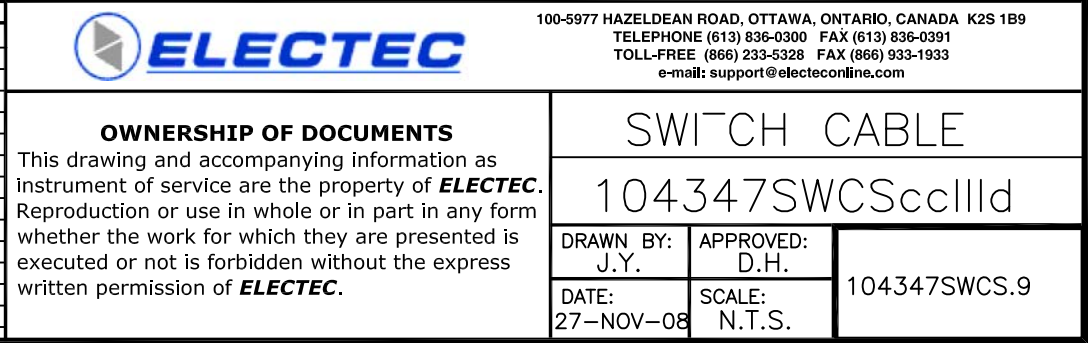
DRAWN BY:
J.Y.

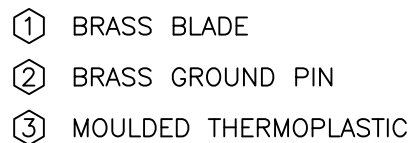
APPROVED:
D.H.

DATE:
10-DEC-08

SCALE:
N.T.S.

103347SWI.7





SYSTEM IS RATED FOR CONNECTION TO A GROUNDED 277V OR 347V BRANCH CIRCUIT.
MANUFACTURED WIRING SYSTEM UTILIZING 12 AWG APPROVED ULTRALX CABLE.
INSTALLATION IN ACCORDANCE WITH THE CEC PART I OR THE NEC.
ACCEPTABLE FOR USE IN ENVIRONMENTAL AIR SPACES OTHER THAN DUCTS OR PLENUMS
PER CEC PART I 12-010(3) OR NEC 300-22(C)
MEETS OR EXCEEDS: - CSA 22.2 NO. 203.1
- UL 183



277 OR 347 Volt 20 Amp

U.S. PATENT - 4775802



This drawing and accompanying information as instrument of service are the property of **ELECTEC**. Reproduction or use in whole or in part in any form whether the work for which they are presented is executed or not is forbidden without the express written permission of **ELECTEC**.

105347BP.6

[illegible]

100-5977 HAZELDEAN ROAD, OTTAWA, ONTARIO, CANADA K2S 1B9
TELEPHONE (613) 836-0300 FAX (613) 836-0391
TOLL-FREE (866) 233-5328 FAX (866) 933-1933
e-mail: support@electeconline.com

OWNERSHIP OF DOCUMENTS

This drawing and accompanying information as instrument of service are the property of **ELECTEC**. Reproduction or use in whole or in part in any form whether the work for which they are presented be executed or not is forbidden without the express written permission of **ELECTEC**.

MULTI TAP

107347TAPcc

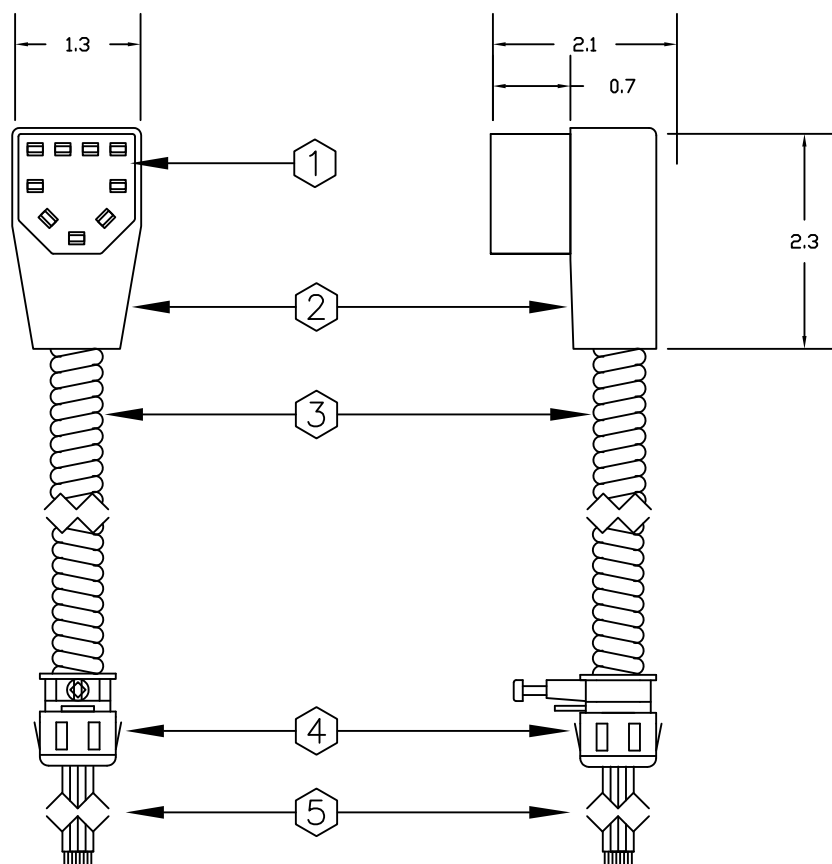
DRAWN BY:
J.Y.

APPROVED:
D.H.

DATE:
10-DEC-08

SCALE:
N.T.S.

107347TAP.7



- 1 BRASS TERMINAL
 2 MOULDED THERMOPLASTIC
 3 "ULTRALX" AC90/MC or AC90 or MC LS 600V 90°C
 (CSA 22.2 No. 51-95 and/or UL 1569)
 4 LOCKNUTLESS BOX CONNECTOR 1/2" K.O.
 5 TAILS WITH STRIPPED ENDS

WHERE "cc" REPRESENTS COLOUR CODE I.E. "BK" IS BLACK
 WHERE "d" REPRESENTS CERTIFIED WIRING MATERIAL I.E. "A" IS AC90
 WHERE "lil" REPRESENTS LENGTH CODE I.E. "040" IS 04.0 METERS
 WHERE "w" REPRESENTS NUMBER OF WIRES FROM 3 TO 9

SYSTEM IS RATED FOR CONNECTION TO A GROUNDED 125/250V BRANCH CIRCUIT.

MANUFACTURED WIRING SYSTEM UTILIZING 12 AWG APPROVED ULTRALX CABLE.

INSTALLATION IN ACCORDANCE WITH THE CEC PART I OR THE NEC.

ACCEPTABLE FOR USE IN ENVIRONMENTAL AIR SPACES OTHER THAN DUCTS OR PLENUMS

PER CEC PART I 12-010(3) OR NEC 300-22(C)

MEETS OR EXCEEDS: - CSA 22.2 NO. 203.1

- UL 183



LR 91749

125/250 Volt 20 Amp

CDN. PATENT - 1219307

U.S. PATENT - 4775802

ITEM	DESCRIPTION	PART#/POSITION	REMARKS
3	BARE	1	GROUND
	GREEN/YELLOW TRACER	2	ISOLATED GROUND
	WHITE/RED TRACER	3	NEUTRAL
	RED	4	LINE CCT. 1/PHASE A
	WHITE/BLACK TRACER	5	NEUTRAL
	BLACK	6	LINE CCT. 2/PHASE B
	WHITE/BLUE TRACER	7	NEUTRAL
	BLUE	8	LINE CCT. 3/PHASE C
	GREEN/ORANGE TRACER	9	ISOLATED GROUND



100-5977 HAZELDEAN ROAD, OTTAWA, ONTARIO, CANADA K2S 1B9
 TELEPHONE (613) 836-0300 FAX (613) 836-0391
 TOLL-FREE (866) 233-5328 FAX (866) 933-1933
 e-mail: support@electeonline.com

OWNERSHIP OF DOCUMENTS

This drawing and accompanying information as instrument of service are the property of **ELECTEC**. Reproduction or use in whole or in part in any form whether the work for which they are presented be executed or not is forbidden without the express written permission of **ELECTEC**.

STARTER CABLE

w2FTcc11ld

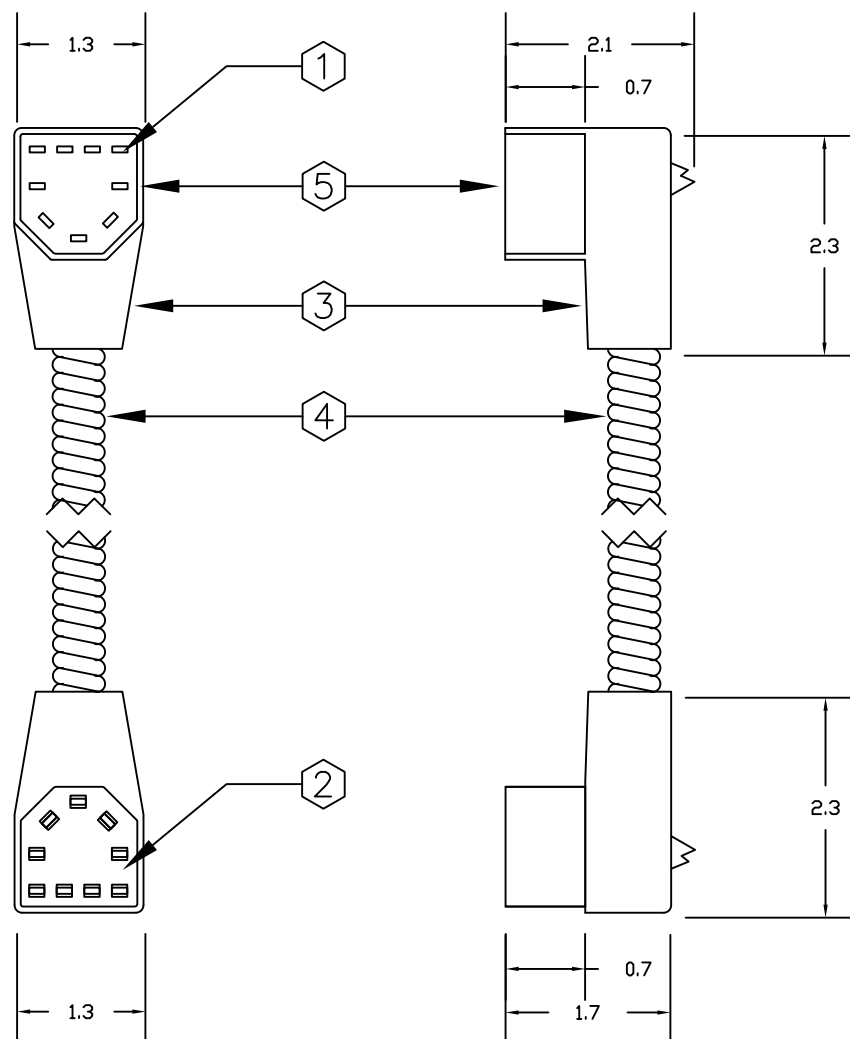
DRAWN BY:
J.Y.

APPROVED:
D.H.

DATE:
10-DEC-08

SCALE:
N.T.S.

w2FT.2



- ① BRASS BLADE
 ② BRASS TERMINAL
 ③ MOULDED THERMOPLASTIC
 ④ "ULTRALX" AC90/MC or AC90 or MC LS 600V 90°C
 (CSA 22.2 No. 51-95 and/or UL 1569)
 ⑤ SHROUD

WHERE "cc" REPRESENTS COLOUR CODE I.E. "BK" IS BLACK
 WHERE "d" REPRESENTS CERTIFIED WIRING MATERIAL I.E. "A" IS AC90
 WHERE "l" REPRESENTS LENGTH CODE I.E. "040" IS 04.0 METERS
 WHERE "w" REPRESENTS NUMBER OF WIRES FROM 3 TO 9

SYSTEM IS RATED FOR CONNECTION TO A GROUNDED 125/250V BRANCH CIRCUIT.

MANUFACTURED WIRING SYSTEM UTILIZING 12 AWG APPROVED ULTRALX CABLE.

INSTALLATION IN ACCORDANCE WITH THE CEC PART I OR THE NEC.

ACCEPTABLE FOR USE IN ENVIRONMENTAL AIR SPACES OTHER THAN DUCTS OR PLENUMS

PER CEC PART I 12-010(3) OR NEC 300-22(C)

MEETS OR EXCEEDS: - CSA 22.2 NO. 203.1

- UL 183

Manufactured
with
"AC90/MC"



C US

Manufactured
with
"AC90"



LR 91749

Manufactured
with
"MC"



US

125/250 Volt 20 Amp

CDN. PATENT - 1219307

U.S. PATENT - 4775802

ITEM	DESCRIPTION	PART#/POSITION	REMARKS
4	BARE	1	GROUND
	GREEN/YELLOW TRACER	2	ISOLATED GROUND
	WHITE/RED TRACER	3	NEUTRAL
	RED	4	LINE CCT. 1/PHASE A
	WHITE/BLACK TRACER	5	NEUTRAL
	BLACK	6	LINE CCT. 2/PHASE B
	WHITE/BLUE TRACER	7	NEUTRAL
	BLUE	8	LINE CCT. 3/PHASE C
	GREEN/ORANGE TRACER	9	ISOLATED GROUND



100-5977 HAZELDEAN ROAD, OTTAWA, ONTARIO, CANADA K2S 1B9
 TELEPHONE (613) 836-0300 FAX (613) 836-0391
 TOLL-FREE (866) 233-5328 FAX (866) 933-1933
 e-mail: support@electeonline.com

OWNERSHIP OF DOCUMENTS

This drawing and accompanying information as instrument of service are the property of **ELECTEC**. Reproduction or use in whole or in part in any form whether the work for which they are presented be executed or not is forbidden without the express written permission of **ELECTEC**.

JOINER CABLE

w2MFccIIId

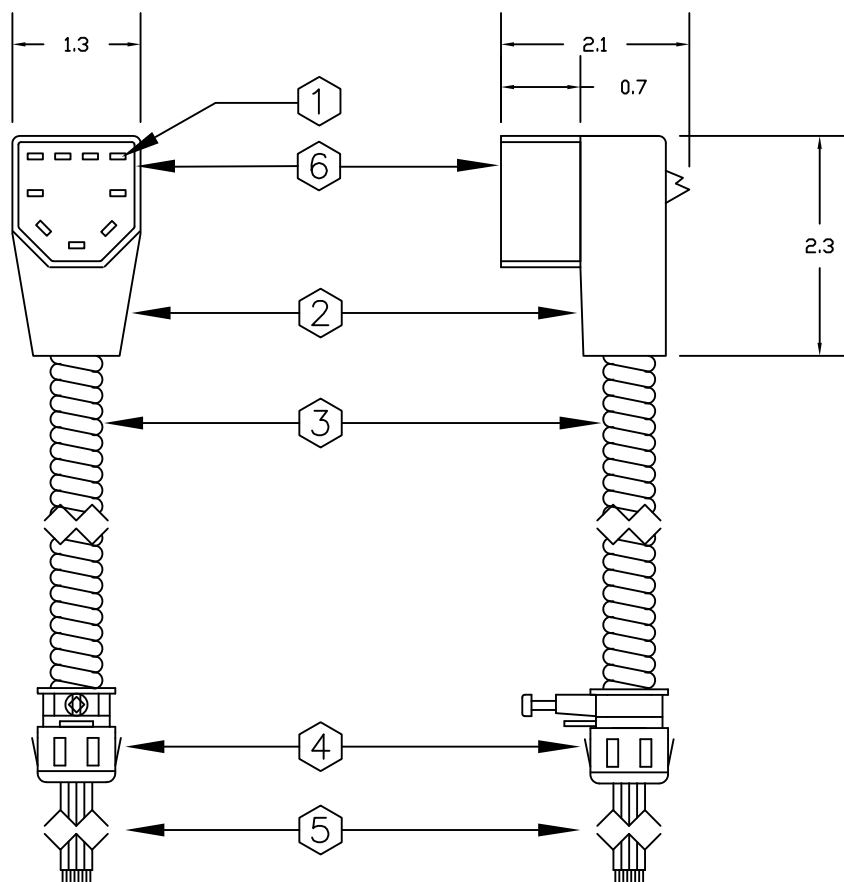
DRAWN BY:
J.Y.

APPROVED:
D.H.

DATE:
10-DEC-08

SCALE:
N.T.S.

w2MF.8



- 1 BRASS BLADE
- 2 MOULDED THERMOPLASTIC
- 3 "ULTRALX" AC90/MC or AC90 or MC LS 600V 90°C (CSA 22.2 No. 51-95 and/or UL 1569)
- 4 LOCKNUTLESS BOX CONNECTOR 1/2" K.O.
- 5 TAILS WITH STRIPPED ENDS
- 6 SHROUD

WHERE "cc" REPRESENTS COLOUR CODE I.E. "BK" IS BLACK
 WHERE "d" REPRESENTS CERTIFIED WIRING MATERIAL I.E. "A" IS AC90
 WHERE "lil" REPRESENTS LENGTH CODE I.E. "040" IS 04.0 METERS
 WHERE "w" REPRESENTS NUMBER OF WIRES FROM 3 TO 9

SYSTEM IS RATED FOR CONNECTION TO A GROUNDED 125/250V BRANCH CIRCUIT.
MANUFACTURED WIRING SYSTEM UTILIZING 12 AWG APPROVED ULTRALX CABLE.
INSTALLATION IN ACCORDANCE WITH THE CEC PART I OR THE NEC.
ACCEPTABLE FOR USE IN ENVIRONMENTAL AIR SPACES OTHER THAN DUCTS OR PLENUMS
PER CEC PART I 12-010(3) OR NEC 300-22(C)
MEETS OR EXCEEDS: - CSA 22.2 NO. 203.1
- UL 183



125/250 Volt 20 Amp

CDN. PATENT - 1219307

U.S. PATENT - 4775802

ITEM	DESCRIPTION	PART#/POSITION	REMARKS
3	BARE	1	GROUND
	GREEN/YELLOW TRACER	2	ISOLATED GROUND
	WHITE/RED TRACER	3	NEUTRAL
	RED	4	LINE CCT. 1/PHASE A
	WHITE/BLACK TRACER	5	NEUTRAL
	BLACK	6	LINE CCT. 2/PHASE B
	WHITE/PLUE TRACER	7	NEUTRAL
	BLUE	8	LINE CCT. 3/PHASE C
	GREEN/ORANGE TRACER	9	ISOLATED GROUND



100-5977 HAZELDEAN ROAD, OTTAWA, ONTARIO, CANADA K2S 1B9
 TELEPHONE (613) 836-0300 FAX (613) 836-0391
 TOLL-FREE (866) 233-5328 FAX (866) 933-1933
 e-mail: support@electeonline.com

OWNERSHIP OF DOCUMENTS

This drawing and accompanying information as instrument of service are the property of **ELECTEC**. Reproduction or use in whole or in part in any form whether the work for which they are presented be executed or not is forbidden without the express written permission of **ELECTEC**.

DROP CABLE

w2MTccllId

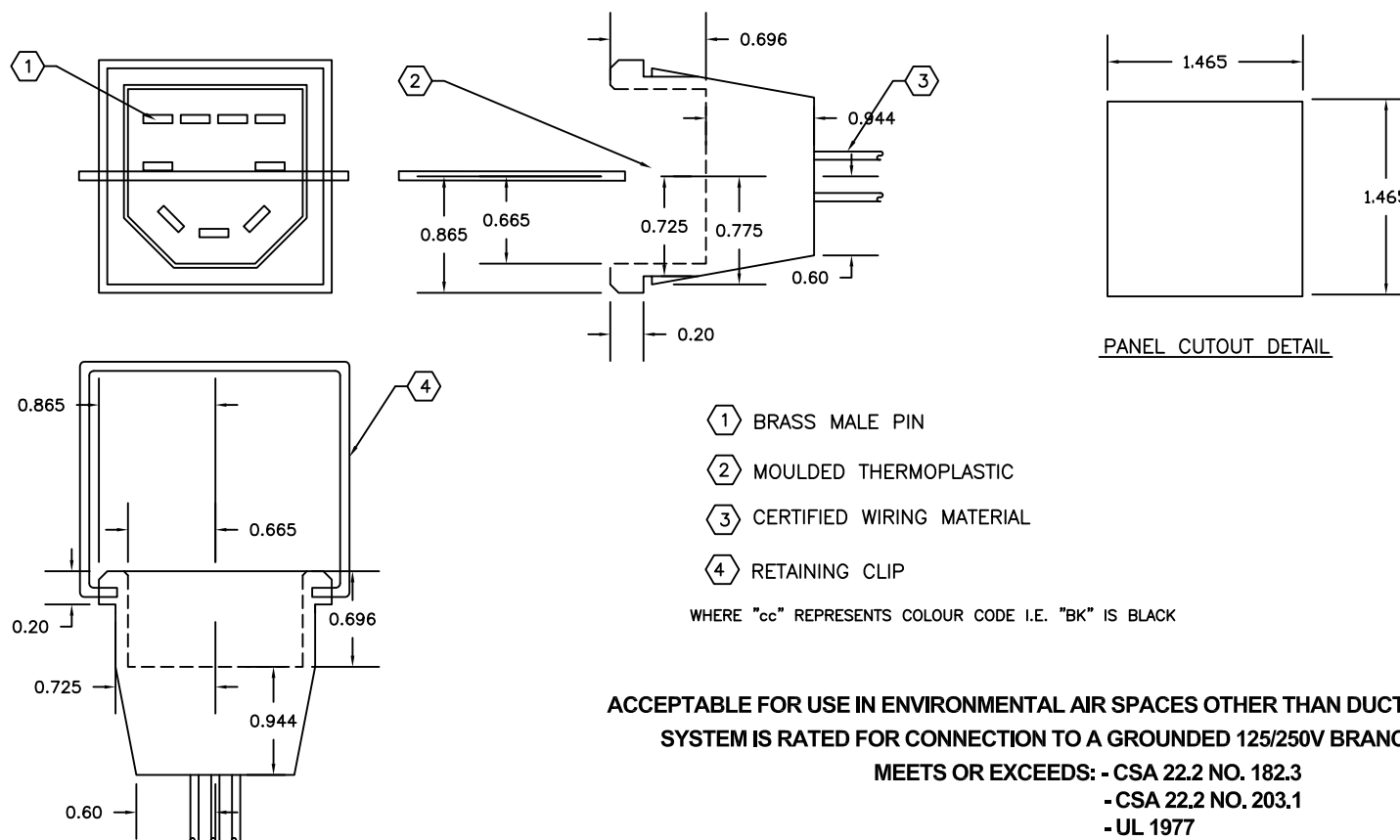
DRAWN BY: J.Y.

APPROVED: D.H.

DATE: 10-DEC-08

SCALE: N.T.S.

w2MT.8



ACCEPTABLE FOR USE IN ENVIRONMENTAL AIR SPACES OTHER THAN DUCTS OR PLENUMS.
SYSTEM IS RATED FOR CONNECTION TO A GROUNDED 125/250V BRANCH CIRCUIT.

MEETS OR EXCEEDS: - CSA 22.2 NO. 182.3
- CSA 22.2 NO. 203.1
- UL 1977
- UL 183



LR 91749

125/250 Volt 20 Amp

CDN. PATENT - 1219307

U.S. PATENT - 4775802

ITEM	DESCRIPTION	PART#/POSITION	REMARKS
3	GREEN	1	GROUND
	GREEN/YELLOW TRACER	2	ISOLATED GROUND
	WHITE/RED TRACER	3	NEUTRAL
	RED	4	LINE CCT. 1/PHASE A
	WHITE/BLACK TRACER	5	NEUTRAL
	BLACK	6	LINE CCT. 2/PHASE B
	WHITE/BLUE TRACER	7	NEUTRAL
	BLUE	8	LINE CCT. 3/PHASE C
	GREEN/ORANGE TRACER	9	ISOLATED GROUND



100-5977 HAZELDEAN ROAD, OTTAWA, ONTARIO, CANADA K2S 1B9
TELEPHONE (613) 836-0300 FAX (613) 836-0391
TOLL-FREE (866) 233-5328 FAX (866) 933-1933
e-mail: support@electeonline.com

OWNERSHIP OF DOCUMENTS

This drawing and accompanying information as instrument of service are the property of **ELECTEC**. Reproduction or use in whole or in part in any form whether the work for which they are presented is executed or not is forbidden without the express written permission of **ELECTEC**.

SINGLE PLUG

w2Pcc

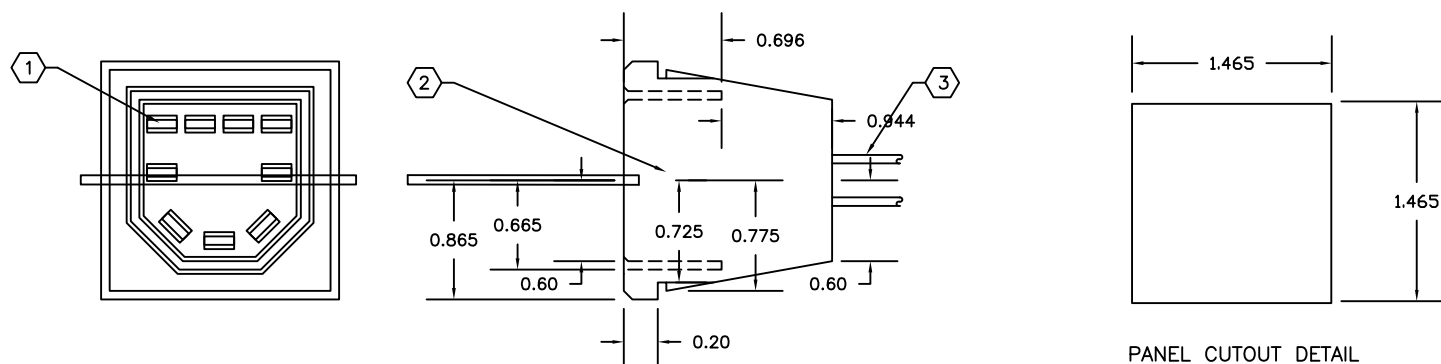
DRAWN BY:
J.Y.

APPROVED:
D.H.

DATE:
21-OCT-08

SCALE:
N.T.S.

w2P.4



- ① BRASS FEMALE TERMINAL
 ② MOULDED THERMOPLASTIC
 ③ CERTIFIED WIRING MATERIAL

RETAINING CLIP

WHERE "cc" REPRESENTS COLOUR CODE I.E. "BK" IS BLACK

ACCEPTABLE FOR USE IN ENVIRONMENTAL AIR SPACES OTHER THAN DUCTS OR PLENUMS.
 SYSTEM IS RATED FOR CONNECTION TO A GROUNDED 125/250V BRANCH CIRCUIT.

MEETS OR EXCEEDS: - CSA 22.2 NO. 182.3
 - CSA 22.2 NO. 203.1
 - UL 1977
 - UL 183



LR 91749

125/250 Volt 20 Amp

CDN. PATENT - 1219307

U.S. PATENT - 4775802

ITEM	DESCRIPTION	PART#/POSITION	REMARKS
3	GREEN	1	GROUND
	GREEN/YELLOW TRACER	2	ISOLATED GROUND
	WHITE/RED TRACER	3	NEUTRAL
	RED	4	LINE CCT. 1/PHASE A
	WHITE/BLACK TRACER	5	NEUTRAL
	BLACK	6	LINE CCT. 2/PHASE B
	WHITE/BLUE TRACER	7	NEUTRAL
	BLUE	8	LINE CCT. 3/PHASE C
	GREEN/ORANGE TRACER	9	ISOLATED GROUND



100-5977 HAZELDEAN ROAD, OTTAWA, ONTARIO, CANADA K2S 1B9
 TELEPHONE (613) 836-0300 FAX (613) 836-0391
 TOLL-FREE (866) 233-5328 FAX (866) 933-1933
 e-mail: support@electeonline.com

OWNERSHIP OF DOCUMENTS

This drawing and accompanying information as instrument of service are the property of **ELECTEC**. Reproduction or use in whole or in part in any form whether the work for which they are presented is executed or not is forbidden without the express written permission of **ELECTEC**.

SINGLE RECEPTACLE

w2Rcc

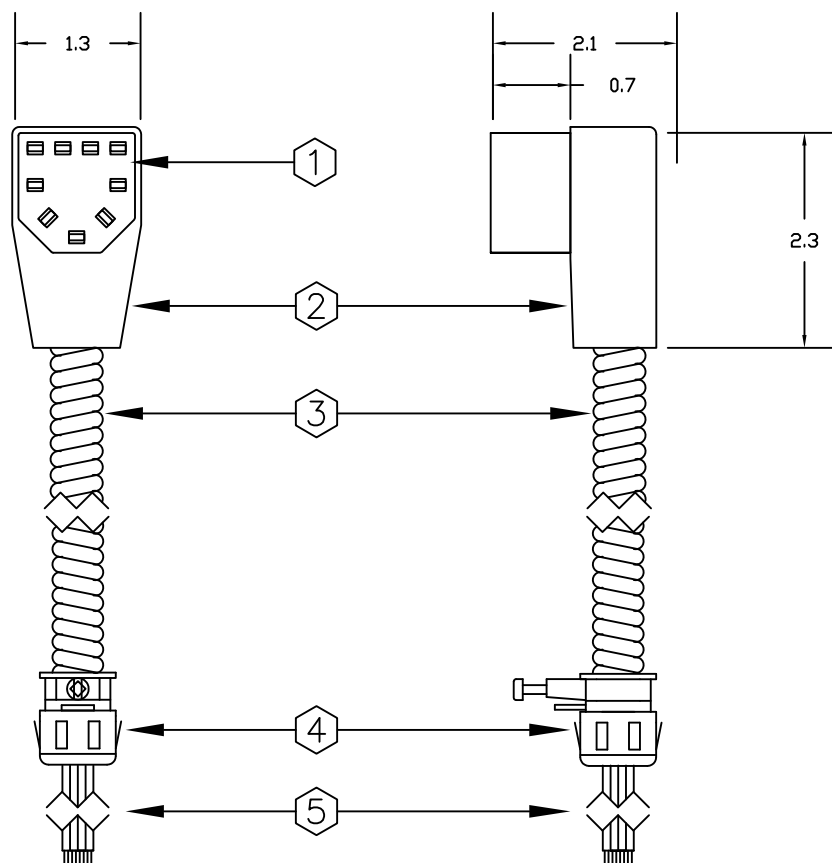
DRAWN BY:
J.Y.

APPROVED:
D.H.

DATE:
21-OCT-08

SCALE:
N.T.S.

w2R.8



- 1 BRASS TERMINAL
- 2 MOULDED THERMOPLASTIC
- 3 "ULTRALX" AC90/MC or AC90 or MC LS 600V 90°C
(CSA 22.2 No. 51-95 and/or UL 1569)
- 4 LOCKNUTLESS BOX CONNECTOR 1/2" K.O.
- 5 TAILS WITH STRIPPED ENDS

WHERE "cc" REPRESENTS COLOUR CODE I.E. "BK" IS BLACK
 WHERE "d" REPRESENTS CERTIFIED WIRING MATERIAL I.E. "A" IS AC90
 WHERE "lil" REPRESENTS LENGTH CODE I.E. "040" IS 04.0 METERS
 WHERE "w" REPRESENTS NUMBER OF WIRES FROM 3 TO 9

SYSTEM IS RATED FOR CONNECTION TO A GROUNDED 125/250V BRANCH CIRCUIT.

MANUFACTURED WIRING SYSTEM UTILIZING 12 AWG APPROVED ULTRALX CABLE.

INSTALLATION IN ACCORDANCE WITH THE CEC PART I OR THE NEC.

ACCEPTABLE FOR USE IN ENVIRONMENTAL AIR SPACES OTHER THAN DUCTS OR PLENUMS

PER CEC PART I 12-010(3) OR NEC 300-22(C)

MEETS OR EXCEEDS: - CSA 22.2 NO. 203.1

- UL 183

Manufactured
with
"AC90/MC"



C US

Manufactured
with
"AC90"



LR 91749

Manufactured
with
"MC"



US

125/250 Volt 20 Amp

CDN. PATENT - 1219307

U.S. PATENT - 4775802

ITEM	DESCRIPTION	PART#/POSITION	REMARKS
3	BARE	1	GROUND
	BLACK/YELLOW TRACER	2	DEDICATED LINE
	WHITE/RED TRACER	3	NEUTRAL
	RED	4	LINE CCT. 1/PHASE A
	WHITE/BLACK TRACER	5	NEUTRAL
	BLACK	6	LINE CCT. 2/PHASE B
	WHITE/BLUE TRACER	7	NEUTRAL
	BLUE	8	LINE CCT. 3/PHASE C
	WHITE/YELLOW TRACER	9	NEUTRAL



100-5977 HAZELDEAN ROAD, OTTAWA, ONTARIO, CANADA K2S 1B9
 TELEPHONE (613) 836-0300 FAX (613) 836-0391
 TOLL-FREE (866) 233-5328 FAX (866) 933-1933
 e-mail: support@electeonline.com

OWNERSHIP OF DOCUMENTS

This drawing and accompanying information as instrument of service are the property of **ELECTEC**. Reproduction or use in whole or in part in any form whether the work for which they are presented be executed or not is forbidden without the express written permission of **ELECTEC**.

STARTER CABLE

w4FTccIIId

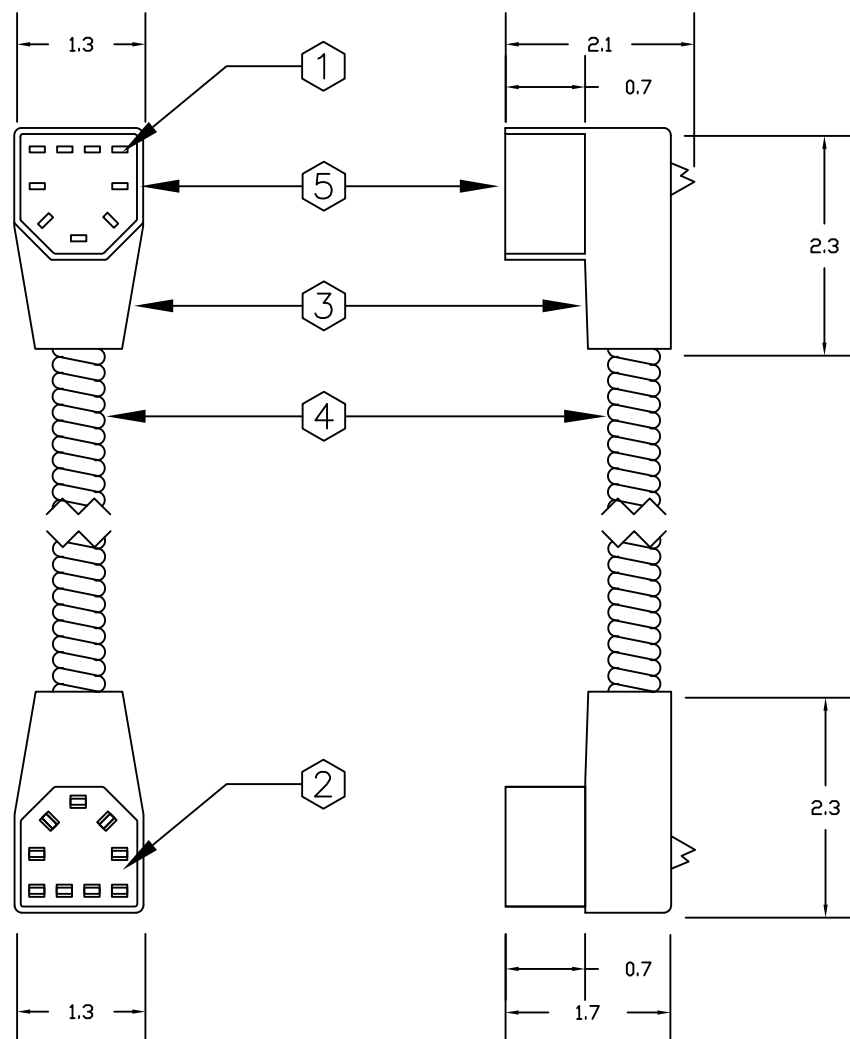
DRAWN BY:
J.Y.

APPROVED:
D.H.

DATE:
10-DEC-08

SCALE:
N.T.S.

w4FT.2



- ① BRASS BLADE
 ② BRASS TERMINAL
 ③ MOULDED THERMOPLASTIC
 ④ "ULTRALX" AC90/MC or AC90 or MC LS 600V 90°C
 (CSA 22.2 No. 51-95 and/or UL 1569)
 ⑤ SHROUD

WHERE "cc" REPRESENTS COLOUR CODE I.E. "BK" IS BLACK
 WHERE "d" REPRESENTS CERTIFIED WIRING MATERIAL I.E. "A" IS AC90
 WHERE "l" REPRESENTS LENGTH CODE I.E. "040" IS 04.0 METERS
 WHERE "w" REPRESENTS NUMBER OF WIRES FROM 3 TO 9

SYSTEM IS RATED FOR CONNECTION TO A GROUNDED 125/250V BRANCH CIRCUIT.

MANUFACTURED WIRING SYSTEM UTILIZING 12 AWG APPROVED ULTRALX CABLE.

INSTALLATION IN ACCORDANCE WITH THE CEC PART I OR THE NEC.

ACCEPTABLE FOR USE IN ENVIRONMENTAL AIR SPACES OTHER THAN DUCTS OR PLENUMS

PER CEC PART I 12-010(3) OR NEC 300-22(C)

MEETS OR EXCEEDS: - CSA 22.2 NO. 203.1

- UL 183

Manufactured
with
"AC90/MC"



Manufactured
with
"AC90"



Manufactured
with
"MC"



LR 91749

125/250 Volt 20 Amp

CDN. PATENT - 1219307

U.S. PATENT - 4775802

ITEM	DESCRIPTION	PART#/POSITION	REMARKS
4	BARE	1	GROUND
	BLACK/YELLOW TRACER	2	DEDICATED LINE
	WHITE/RED TRACER	3	NEUTRAL
	RED	4	LINE CCT. 1/PHASE A
	WHITE/BLACK TRACER	5	NEUTRAL
	BLACK	6	LINE CCT. 2/PHASE B
	WHITE/BLUE TRACER	7	NEUTRAL
	BLUE	8	LINE CCT. 3/PHASE C
	WHITE/YELLOW TRACER	9	NEUTRAL



100-5977 HAZELDEAN ROAD, OTTAWA, ONTARIO, CANADA K2S 1B9
 TELEPHONE (613) 836-0300 FAX (613) 836-0391
 TOLL-FREE (866) 233-5328 FAX (866) 933-1933
 e-mail: support@electeonline.com

OWNERSHIP OF DOCUMENTS

This drawing and accompanying information as instrument of service are the property of **ELECTEC**. Reproduction or use in whole or in part in any form whether the work for which they are presented be executed or not is forbidden without the express written permission of **ELECTEC**.

JOINER CABLE

w4MFccIIId

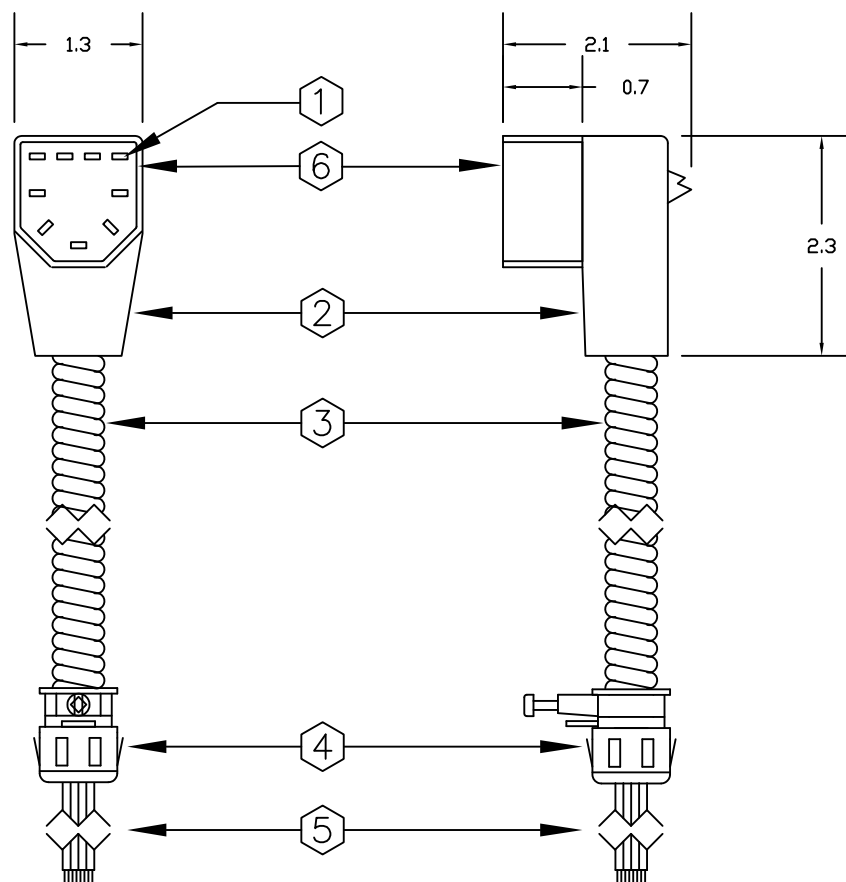
DRAWN BY:
J.Y.

APPROVED:
D.H.

DATE:
10-DEC-08

SCALE:
N.T.S.

w4MF.8



- 1 BRASS BLADE
- 2 MOULDED THERMOPLASTIC
- 3 "ULTRALX" AC90/MC or AC90 or MC LS 600V 90°C (CSA 22.2 No. 51-95 and/or UL 1569)
- 4 LOCKNUTLESS BOX CONNECTOR 1/2" K.O.
- 5 TAILS WITH STRIPPED ENDS
- 6 SHROUD

WHERE "cc" REPRESENTS COLOUR CODE I.E. "BK" IS BLACK
 WHERE "d" REPRESENTS CERTIFIED WIRING MATERIAL I.E. "A" IS AC90
 WHERE "lil" REPRESENTS LENGTH CODE I.E. "040" IS 04.0 METERS
 WHERE "w" REPRESENTS NUMBER OF WIRES FROM 3 TO 9

SYSTEM IS RATED FOR CONNECTION TO A GROUNDED 125/250V BRANCH CIRCUIT.
MANUFACTURED WIRING SYSTEM UTILIZING 12 AWG APPROVED ULTRALX CABLE.
INSTALLATION IN ACCORDANCE WITH THE CEC PART I OR THE NEC.
ACCEPTABLE FOR USE IN ENVIRONMENTAL AIR SPACES OTHER THAN DUCTS OR PLENUMS
PER CEC PART I 12-010(3) OR NEC 300-22(C)
MEETS OR EXCEEDS: - CSA 22.2 NO. 203.1
- UL 183



125/250 Volt 20 Amp

CDN. PATENT - 1219307

U.S. PATENT - 4775802

ITEM	DESCRIPTION	PART#/POSITION	REMARKS
3	BARE	1	GROUND
	BLACK/YELLOW TPACER	2	DEDICATED LINE
	WHITE/RED TRACER	3	NEUTRAL
	RED	4	LINE CCT. 1/PHASE A
	WHITE/BLACK TRACER	5	NEUTRAL
	BLACK	6	LINE CCT. 2/PHASE B
	WHITE/BLUE TRACER	7	NEUTRAL
	BLUE	8	LINE CCT. 3/PHASE C
	WHITE/YELLOW TRACER	9	NEUTRAL



100-5977 HAZELDEAN ROAD, OTTAWA, ONTARIO, CANADA K2S 1B9
 TELEPHONE (613) 836-0300 FAX (613) 836-0391
 TOLL-FREE (866) 233-5328 FAX (866) 933-1933
 e-mail: support@electeonline.com

OWNERSHIP OF DOCUMENTS

This drawing and accompanying information as instrument of service are the property of **ELECTEC**. Reproduction or use in whole or in part in any form whether the work for which they are presented be executed or not is forbidden without the express written permission of **ELECTEC**.

DROP CABLE

w4MTccllId

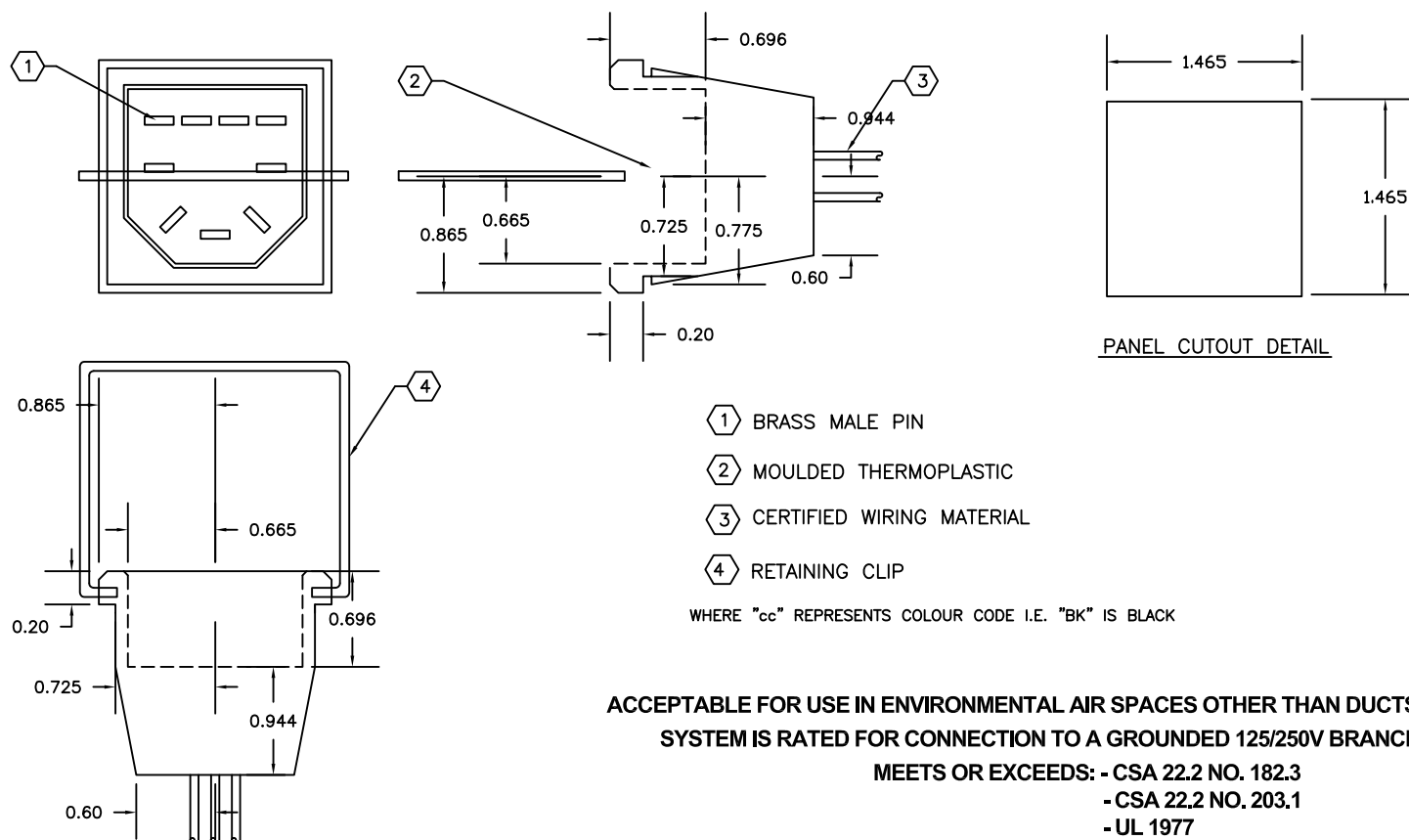
DRAWN BY:
J.Y.

APPROVED:
D.H.

DATE:
10-DEC-08

SCALE:
N.T.S.

w4MT.8



ACCEPTABLE FOR USE IN ENVIRONMENTAL AIR SPACES OTHER THAN DUCTS OR PLENUMS.
SYSTEM IS RATED FOR CONNECTION TO A GROUNDED 125/250V BRANCH CIRCUIT.

MEETS OR EXCEEDS: - CSA 22.2 NO. 182.3
- CSA 22.2 NO. 203.1
- UL 1977
- UL 183



LR 91749

125/250 Volt 20 Amp

CDN. PATENT - 1219307

U.S. PATENT - 4775802

ITEM	DESCRIPTION	PART#/POSITION	REMARKS
3	GREEN	1	GROUND
	BLACK/YELLOW TRACER	2	DEDICATED LINE
	WHITE/RED TRACER	3	NEUTRAL
	RED	4	LINE CCT. 1/PHASE A
	WHITE/BLACK TRACER	5	NEUTRAL
	BLACK	6	LINE CCT. 2/PHASE B
	WHITE/BLUE TRACER	7	NEUTRAL
	BLUE	8	LINE CCT. 3/PHASE C
	WHITE/YELLOW TRACER	9	NEUTRAL



100-5977 HAZELDEAN ROAD, OTTAWA, ONTARIO, CANADA K2S 1B9
TELEPHONE (613) 836-0300 FAX (613) 836-0391
TOLL-FREE (866) 233-5328 FAX (866) 933-1933
e-mail: support@electeonline.com

OWNERSHIP OF DOCUMENTS

This drawing and accompanying information as instrument of service are the property of **ELECTEC**. Reproduction or use in whole or in part in any form whether the work for which they are presented is executed or not is forbidden without the express written permission of **ELECTEC**.

SINGLE PLUG

w4Pcc

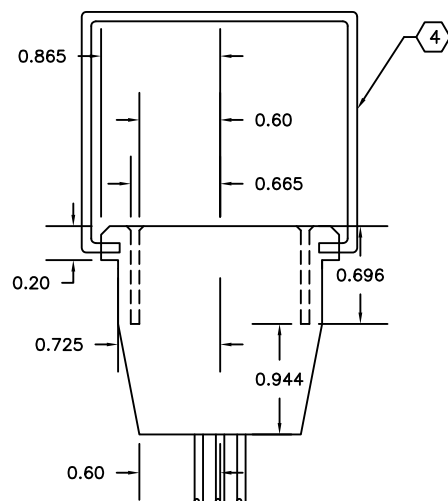
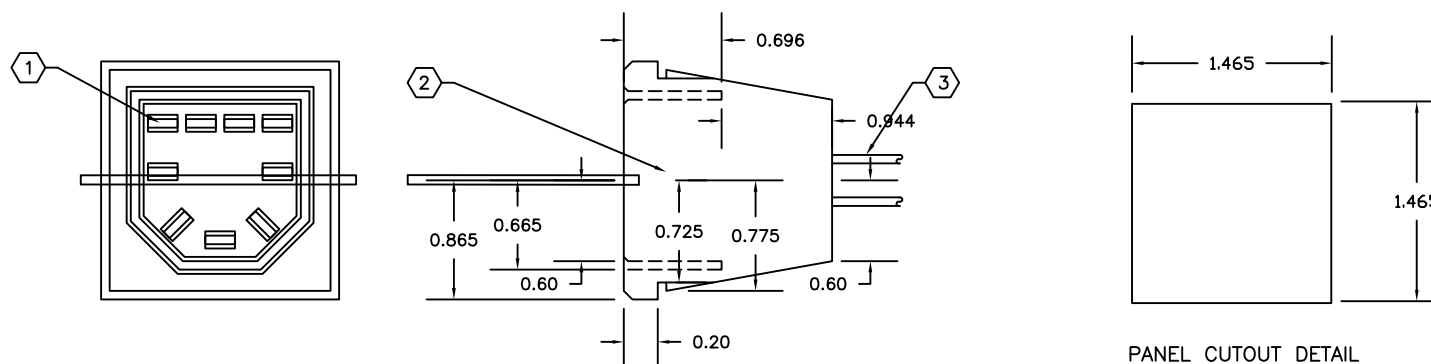
DRAWN BY:
J.Y.

APPROVED:
D.H.

DATE:
21-OCT-08

SCALE:
N.T.S.

w4P.6



- ① BRASS FEMALE TERMINAL
 ② MOULDED THERMOPLASTIC
 ③ CERTIFIED WIRING MATERIAL

RETAINING CLIP

WHERE "cc" REPRESENTS COLOUR CODE I.E. "BK" IS BLACK

ACCEPTABLE FOR USE IN ENVIRONMENTAL AIR SPACES OTHER THAN DUCTS OR PLENUMS.
 SYSTEM IS RATED FOR CONNECTION TO A GROUNDED 125/250V BRANCH CIRCUIT.

MEETS OR EXCEEDS: - CSA 22.2 NO. 182.3
 - CSA 22.2 NO. 203.1
 - UL 1977
 - UL 183



LR 91749

125/250 Volt 20 Amp

CDN. PATENT - 1219307

U.S. PATENT - 4775802

ITEM	DESCRIPTION	PART#/POSITION	REMARKS
3	GREEN	1	GROUND
	BLACK/YELLOW TRACER	2	DEDICATED LINE
	WHITE/RED TRACER	3	NEUTRAL
	RED	4	LINE CCT. 1/PHASE A
	WHITE/BLACK TRACER	5	NEUTRAL
	BLACK	6	LINE CCT. 2/PHASE B
	WHITE/BLUE TRACER	7	NEUTRAL
	BLUE	8	LINE CCT. 3/PHASE C
	WHITE/YELLOW TRACER	9	NEUTRAL



100-5977 HAZELDEAN ROAD, OTTAWA, ONTARIO, CANADA K2S 1B9
 TELEPHONE (613) 836-0300 FAX (613) 836-0391
 TOLL-FREE (866) 233-5328 FAX (866) 933-1933
 e-mail: support@electeonline.com

OWNERSHIP OF DOCUMENTS

This drawing and accompanying information as instrument of service are the property of **ELECTEC**. Reproduction or use in whole or in part in any form whether the work for which they are presented is executed or not is forbidden without the express written permission of **ELECTEC**.

SINGLE RECEPTACLE

w4Rcc

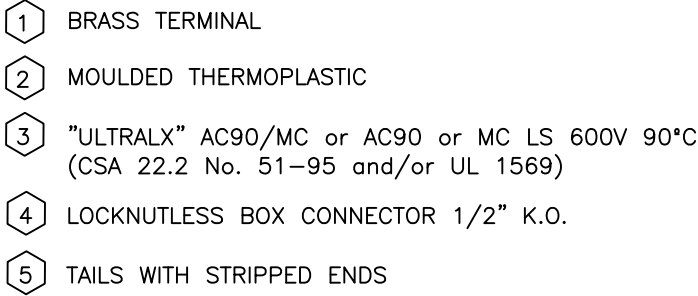
DRAWN BY:
J.Y.

APPROVED:
D.H.

DATE:
21-OCT-08

SCALE:
N.T.S.

w4R.5



**SYSTEM IS RATED FOR CONNECTION TO A GROUNDED 125/250V BRANCH CIRCUIT.
MANUFACTURED WIRING SYSTEM UTILIZING 12 AWG APPROVED ULTRALX CABLE.
INSTALLATION IN ACCORDANCE WITH THE CEC PART I OR THE NEC.
ACCEPTABLE FOR USE IN ENVIRONMENTAL AIR SPACES OTHER THAN DUCTS OR PLENUMS
PER CEC PART I 12-010(3) OR NEC 300-22(C)
MEETS OR EXCEEDS: - CSA 22.2 NO. 203.1
- UL 183
ACCEPTABLE MEANS FOR DISCONNECTING LUMINARIES
PER CEC PART I 30-308(4) OR NEC 410.73(G).**

LR 91749

CDN. PATENT - 1219307 U.S. PATENT - 4775802

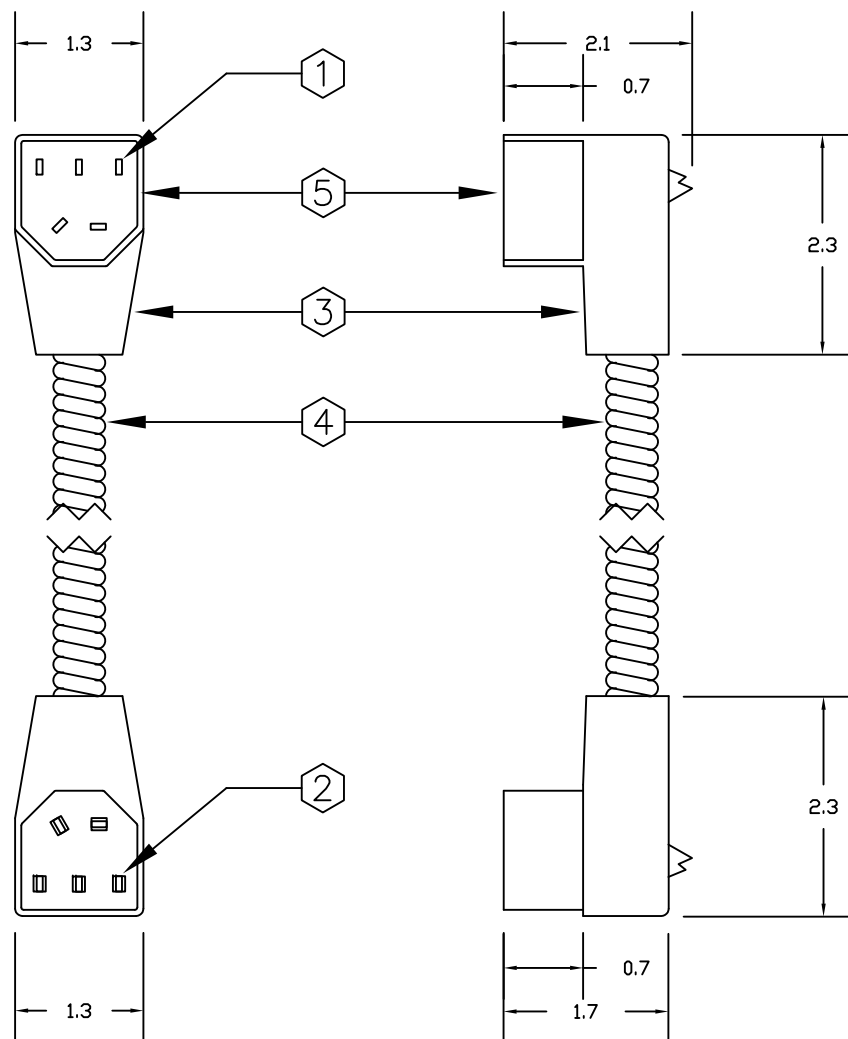


This drawing and accompanying information as instrument of service are the property of **ELECTEC**. Reproduction or use in whole or in part in any form whether the work for which they are presented be executed or not is forbidden without the express written permission of **ELECTEC**.

STARTER CABLE

DATE: 10-DEC-08	SCALE: N.T.S.
--------------------	------------------

w6FT.8



- 1 BRASS BLADE
- 2 BRASS TERMINAL
- 3 MOULDED THERMOPLASTIC
- 4 "ULTRALX" AC90/MC or AC90 or MC LS 600V 90°C
(CSA 22.2 No. 51-95 and/or UL 1569)
- 5 SHROUD

WHERE "cc" REPRESENTS COLOUR CODE I.E. "BK" IS BLACK
WHERE "d" REPRESENTS CERTIFIED WIRING MATERIAL I.E. "A" IS AC90
WHERE "lil" REPRESENTS LENGTH CODE I.E. "040" IS 04.0 METERS
WHERE "w" REPRESENTS NUMBER OF WIRES FROM 3 TO 5

SYSTEM IS RATED FOR CONNECTION TO A GROUNDED 125/250V BRANCH CIRCUIT.

MANUFACTURED WIRING SYSTEM UTILIZING 12 AWG APPROVED ULTRALX CABLE.

INSTALLATION IN ACCORDANCE WITH THE CEC PART I OR THE NEC.

ACCEPTABLE FOR USE IN ENVIRONMENTAL AIR SPACES OTHER THAN DUCTS OR PLENUMS

PER CEC PART I 12-010(3) OR NEC 300-22(C)

MEETS OR EXCEEDS: - CSA 22.2 NO. 203.1

- UL 183

ACCEPTABLE MEANS FOR DISCONNECTING LUMINARIES

PER CEC PART I 30-308(4) OR NEC 410.73(G).

Manufactured
with
"AC90/MC"



Manufactured
with
"AC90"



Manufactured
with
"MC"



125/250 Volt 20 Amp

CDN. PATENT - 1219307

U.S. PATENT - 4775802

[illegible]

100-5977 HAZELDEAN ROAD, OTTAWA, ONTARIO, CANADA K2S 1B9
TELEPHONE (613) 836-0300 FAX (613) 836-0391
TOLL-FREE (866) 233-5328 FAX (866) 933-1933
e-mail: support@electeconline.com

OWNERSHIP OF DOCUMENTS

This drawing and accompanying information as instrument of service are the property of **ELECTEC**. Reproduction or use in whole or in part in any form whether the work for which they are presented be executed or not is forbidden without the express written permission of **ELECTEC**.

JOINER CABLE

w6MFccIId

DRAWN BY:
J.Y.

APPROVED:
D.H.

DATE:
10-DEC-08

SCALE:
N.T.S.

w6MF.9

[illegible]

100-5977 HAZELDEAN ROAD, OTTAWA, ONTARIO, CANADA K2S 1B9
TELEPHONE (613) 836-0300 FAX (613) 836-0391
TOLL-FREE (866) 233-5328 FAX (866) 933-1933
e-mail: support@electeconline.com

OWNERSHIP OF DOCUMENTS

This drawing and accompanying information as instrument of service are the property of **ELECTEC**. Reproduction or use in whole or in part in any form whether the work for which they are presented be executed or not is forbidden without the express written permission of **ELECTEC**.

DROP CABLE

w6MTcclld

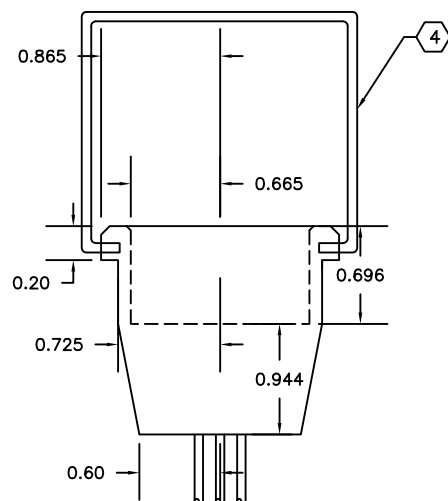
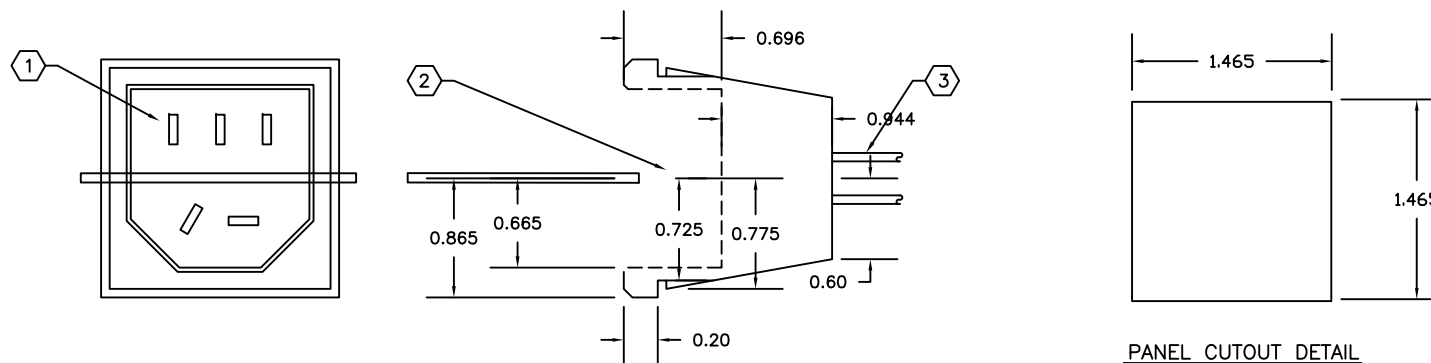
DRAWN BY:
J.Y.

APPROVED:
D.H.

DATE:
10-DEC-08

SCALE:
N.T.S.

w6MT.8



- ① BRASS MALE PIN
- ② MOULDED THERMOPLASTIC
- ③ CERTIFIED WIRING MATERIAL
- ④ RETAINING CLIP

WHERE "cc" REPRESENTS COLOUR CODE I.E. "BK" IS BLACK

ACCEPTABLE MEANS FOR DISCONNECTING LUMINARIES
ACCEPTABLE FOR USE IN ENVIRONMENTAL AIR SPACES OTHER THAN DUCTS OR PLENUMS.
SYSTEM IS RATED FOR CONNECTION TO A GROUNDED 125/250V BRANCH CIRCUIT.

MEETS OR EXCEEDS: - CSA 22.2 NO. 182.3
- CSA 22.2 NO. 203.1
- UL 1977
- UL 183



LR 91749

125/250 Volt 20 Amp

CDN. PATENT - 1219307

U.S. PATENT - 4775802

[illegible]

100-5977 HAZELDEAN ROAD, OTTAWA, ONTARIO, CANADA K2S 1B9
TELEPHONE (613) 836-0300 FAX (613) 836-0391
TOLL-FREE (866) 233-5328 FAX (866) 933-1933
e-mail: support@electeconline.com

OWNERSHIP OF DOCUMENTS

This drawing and accompanying information as instrument of service are the property of **ELECTEC**. Reproduction or use in whole or in part in any form whether the work for which they are presented is executed or not is forbidden without the express written permission of **ELECTEC**.

SINGLE PLUG

w6Pcc

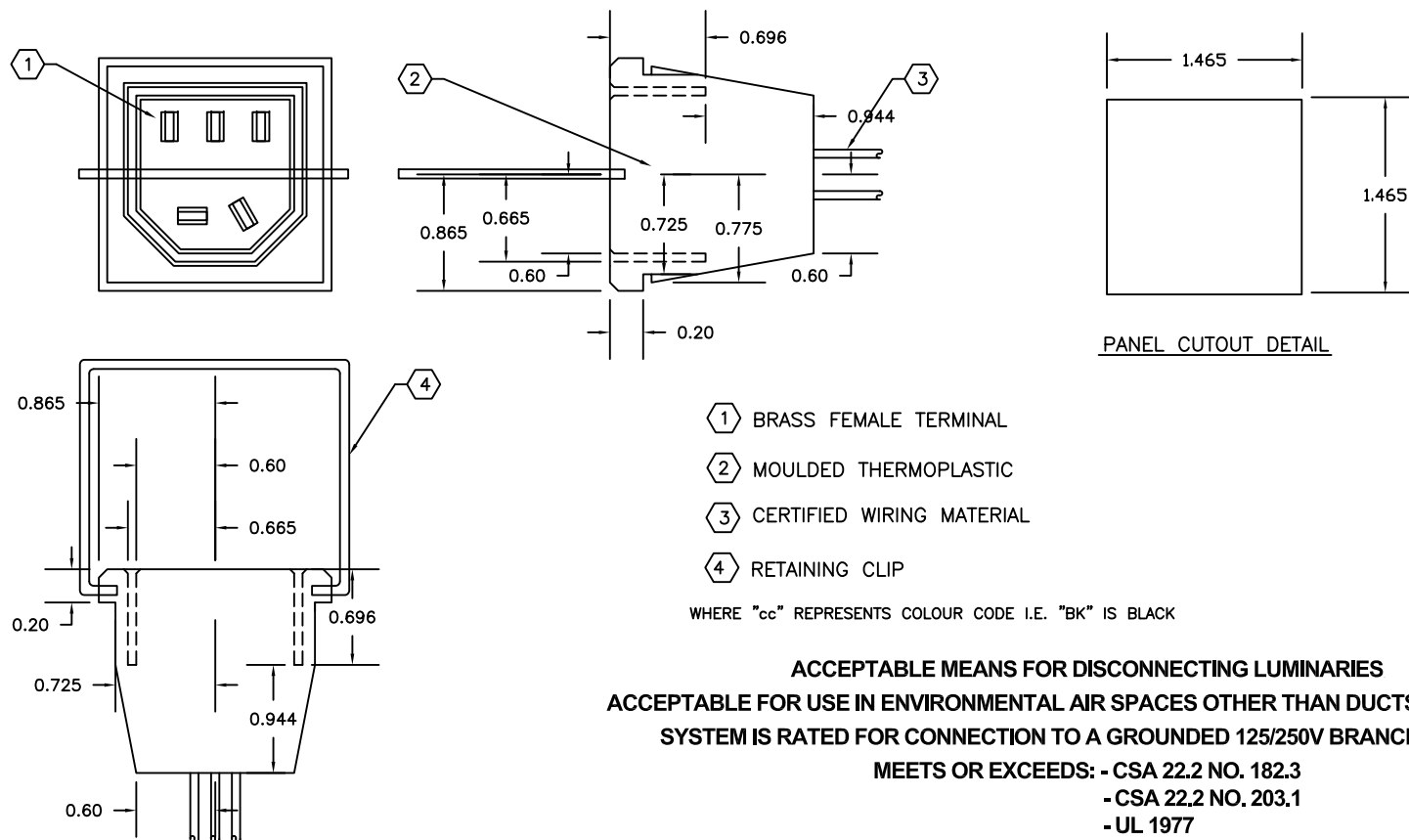
DRAWN BY:
J.Y.

APPROVED:
D.H.

DATE:
21-OCT-08

SCALE:
N.T.S.

HW6P.2



ACCEPTABLE MEANS FOR DISCONNECTING LUMINARIES
ACCEPTABLE FOR USE IN ENVIRONMENTAL AIR SPACES OTHER THAN DUCTS OR PLENUMS.
SYSTEM IS RATED FOR CONNECTION TO A GROUNDED 125/250V BRANCH CIRCUIT.

MEETS OR EXCEEDS: - CSA 22.2 NO. 182.3
- CSA 22.2 NO. 203.1
- UL 1977
- UL 183



LR 91749

125/250 Volt 20 Amp

CDN. PATENT - 1219307

U.S. PATENT - 4775802

[illegible]

100-5977 HAZELDEAN ROAD, OTTAWA, ONTARIO, CANADA K2S 1B9
TELEPHONE (613) 836-0300 FAX (613) 836-0391
TOLL-FREE (866) 233-5328 FAX (866) 933-1933
e-mail: support@electeconline.com

OWNERSHIP OF DOCUMENTS

This drawing and accompanying information as instrument of service are the property of **ELECTEC**. Reproduction or use in whole or in part in any form whether the work for which they are presented is executed or not is forbidden without the express written permission of **ELECTEC**.

SINGLE RECEPTACLE

w6Rcc

DRAWN BY:
J.Y.

APPROVED:
D.H.

DATE:
21-OCT-08

SCALE:
N.T.S.

w6R.2

[illegible]

100-5977 HAZELDEAN ROAD, OTTAWA, ONTARIO, CANADA K2S 1B9
TELEPHONE (613) 836-0300 FAX (613) 836-0391
TOLL-FREE (866) 233-5328 FAX (866) 933-1933
e-mail: support@electeconline.com

OWNERSHIP OF DOCUMENTS

This drawing and accompanying information as instrument of service are the property of **ELECTEC**. Reproduction or use in whole or in part in any form whether the work for which they are presented is executed or not is forbidden without the express written permission of **ELECTEC**.

SWITCH RECEPTACLE

w6Scc

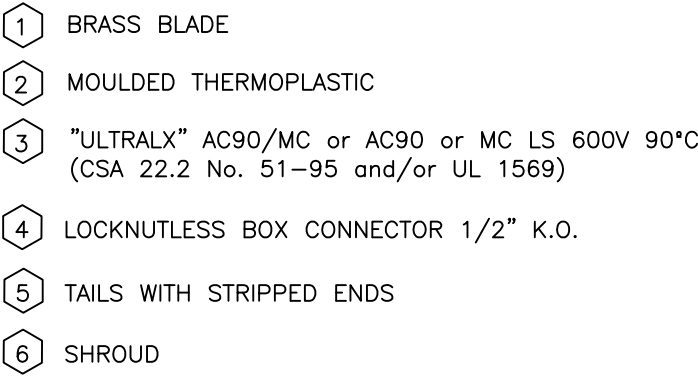
DRAWN BY:
J.Y.

APPROVED:
D.H.

DATE:
21-OCT-08

SCALE:
N.T.S.

w6S.4



WHERE "cc" REPRESENTS COLOUR CODE I.E. "BK" IS BLACK
WHERE "d" REPRESENTS CERTIFIED WIRING MATERIAL I.E. "A" IS AC90
WHERE "l" REPRESENTS LENGTH CODE I.E. "040" IS 04.0 METERS
WHERE "w" REPRESENTS NUMBER OF WIRES FROM 3 TO 5

SYSTEM IS RATED FOR CONNECTION TO A GROUNDED 125/250V BRANCH CIRCUIT.
MANUFACTURED WIRING SYSTEM UTILIZING 12 AWG APPROVED ULTRALX CABLE.
INSTALLATION IN ACCORDANCE WITH THE CEC PART I OR THE NEC.
ACCEPTABLE FOR USE IN ENVIRONMENTAL AIR SPACES OTHER THAN DUCTS OR PLENUMS
PER CEC PART I 12-010(3) OR NEC 300-22(C)
MEETS OR EXCEEDS: - CSA 22.2 NO. 203.1
- UL 183

Manufactured with "AC90/MC"	Manufactured with "AC90"	Manufactured with "MC"
		
	LR 91749	

125/250 Volt 20 Amp

CDN. PATENT - 1219307 U.S. PATENT - 4775802

[illegible]

100-5977 HAZELDEAN ROAD, OTTAWA, ONTARIO, CANADA K2S 1B9
TELEPHONE (613) 836-0300 FAX (613) 836-0391
TOLL-FREE (866) 233-5328 FAX (866) 933-1933
e-mail: support@electeonline.com

OWNERSHIP OF DOCUMENTS

This drawing and accompanying information as instrument of service are the property of **ELECTEC**. Reproduction or use in whole or in part in any form whether the work for which they are presented be executed or not is forbidden without the express written permission of **ELECTEC**.

SWITCH CABLE

w6STcc|||d

DRAWN BY: J.Y.	APPROVED: D.H.
-------------------	-------------------

DATE: 10-DEC-08 | SCALE: N.T.S.

w6ST.4

[illegible]

100-5977 HAZELDEAN ROAD, OTTAWA, ONTARIO, CANADA K2S 1B9
TELEPHONE (613) 836-0300 FAX (613) 836-0391
TOLL-FREE (866) 233-5328 FAX (866) 933-1933
e-mail: support@electeconline.com

OWNERSHIP OF DOCUMENTS

This drawing and accompanying information as instrument of service are the property of **ELECTEC**. Reproduction or use in whole or in part in any form whether the work for which they are presented be executed or not is forbidden without the express written permission of **ELECTEC**.

MULTI TAP

w6TAPcc

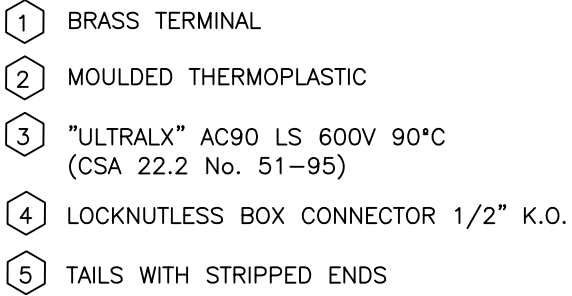
DRAWN BY:
J.Y.

APPROVED:
D.H.

DATE:
10-DEC-08

SCALE:
N.T.S.

w6TAP.8



SYSTEM IS RATED FOR CONNECTION TO A GROUNDED 277/480V OR 347/600V BRANCH CIRCUIT.
MANUFACTURED WIRING SYSTEM UTILIZING 12 AWG APPROVED ULTRALX CABLE.
INSTALLATION IN ACCORDANCE WITH THE CEC PART I.
ACCEPTABLE FOR USE IN ENVIRONMENTAL AIR SPACES OTHER THAN DUCTS OR PLENUMS
PER CEC PART I 12-010(3).
MEETS OR EXCEEDS: - CSA 22.2 NO. 203.1

277/480 OR 347/600 Volt 20 Amp

U.S. PATENT - 4775802



This drawing and accompanying information as instrument of service are the property of **ELECTEC**. Reproduction or use in whole or in part in any form whether the work for which they are presented be executed or not is forbidden without the express written permission of **ELECTEC**.

w7FT.2

[illegible]

100-5977 HAZELDEAN ROAD, OTTAWA, ONTARIO, CANADA K2S 1B9
TELEPHONE (613) 836-0300 FAX (613) 836-0391
TOLL-FREE (866) 233-5328 FAX (866) 933-1933
e-mail: support@electeconline.com

OWNERSHIP OF DOCUMENTS

This drawing and accompanying information as instrument of service are the property of **ELECTEC**. Reproduction or use in whole or in part in any form whether the work for which they are presented be executed or not is forbidden without the express written permission of **ELECTEC**.

JOINER CABLE

w7MFccIId

DRAWN BY:
J.Y.

APPROVED:
D.H.

DATE:
10-DEC-08

SCALE:
N.T.S.

w7MF.9

[illegible]

100-5977 HAZELDEAN ROAD, OTTAWA, ONTARIO, CANADA K2S 1B9
TELEPHONE (613) 836-0300 FAX (613) 836-0391
TOLL-FREE (866) 233-5328 FAX (866) 933-1933
e-mail: support@electeconline.com

OWNERSHIP OF DOCUMENTS

This drawing and accompanying information as instrument of service are the property of **ELECTEC**. Reproduction or use in whole or in part in any form whether the work for which they are presented be executed or not is forbidden without the express written permission of **ELECTEC**.

DROP CABLE

w7MTccIId

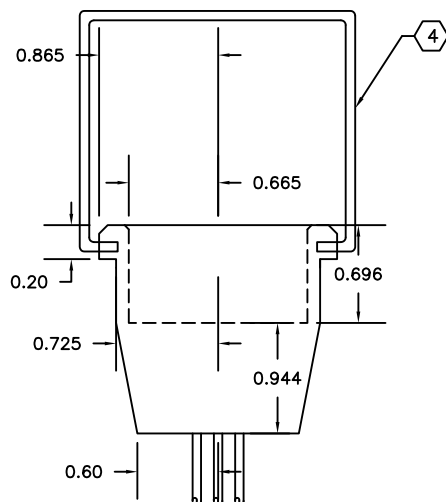
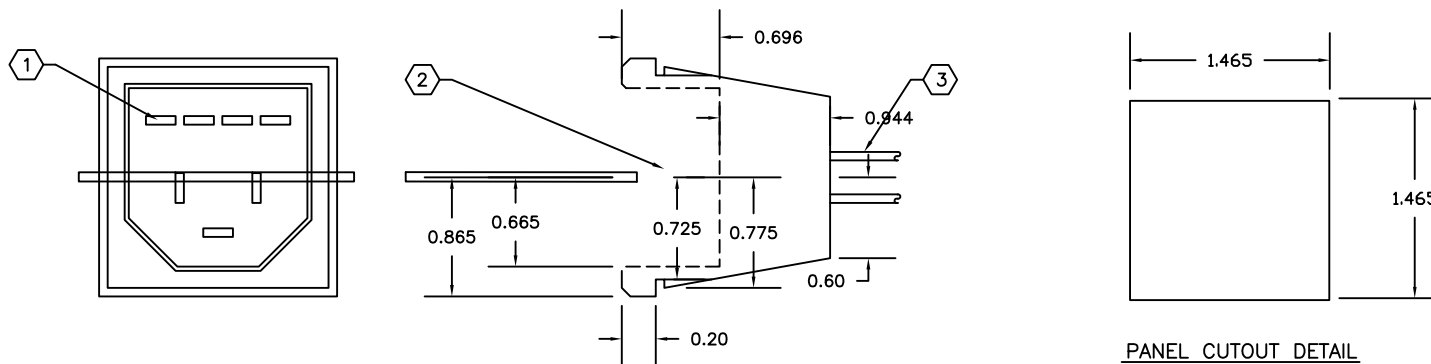
DRAWN BY:
J.Y.

APPROVED:
D.H.

DATE:
10-DEC-08

SCALE:
N.T.S.

w7MT.9



- ① BRASS MALE PIN
- ② MOULDED THERMOPLASTIC
- ③ CERTIFIED WIRING MATERIAL
- ④ RETAINING CLIP

WHERE "cc" REPRESENTS COLOUR CODE I.E. "BK" IS BLACK

**ACCEPTABLE FOR USE IN ENVIRONMENTAL AIR SPACES OTHER THAN DUCTS OR PLENUMS.
SYSTEM IS RATED FOR CONNECTION TO A GROUNDED 277/480V OR 347/600V BRANCH CIRCUIT.**

MEETS OR EXCEEDS: - CSA 22.2 NO. 182.3
- CSA 22.2 NO. 203.1
- UL 1977
- UL 183



LR 91749

277/480 OR 347/600 Volt 20 Amp

CDN. PATENT - 1219307

U.S. PATENT - 4775802

[illegible]

100-5977 HAZELDEAN ROAD, OTTAWA, ONTARIO, CANADA K2S 1B9
TELEPHONE (613) 836-0300 FAX (613) 836-0391
TOLL-FREE (866) 233-5328 FAX (866) 933-1933
e-mail: support@electeconline.com

OWNERSHIP OF DOCUMENTS

This drawing and accompanying information as instrument of service are the property of **ELECTEC**. Reproduction or use in whole or in part in any form whether the work for which they are presented is executed or not is forbidden without the express written permission of **ELECTEC**.

SINGLE PLUG

w7Pcc

DRAWN BY:
J.Y.

APPROVED:
D.H.

DATE:
21-OCT-08

SCALE:
N.T.S.

Hw7P.3

[illegible]

100-5977 HAZELDEAN ROAD, OTTAWA, ONTARIO, CANADA K2S 1B9
TELEPHONE (613) 836-0300 FAX (613) 836-0391
TOLL-FREE (866) 233-5328 FAX (866) 933-1933
e-mail: support@electeconline.com

OWNERSHIP OF DOCUMENTS

This drawing and accompanying information as instrument of service are the property of **ELECTEC**. Reproduction or use in whole or in part in any form whether the work for which they are presented is executed or not is forbidden without the express written permission of **ELECTEC**.

SINGLE RECEPTACLE

w7Rcc

DRAWN BY:
J.Y.

APPROVED:
D.H.

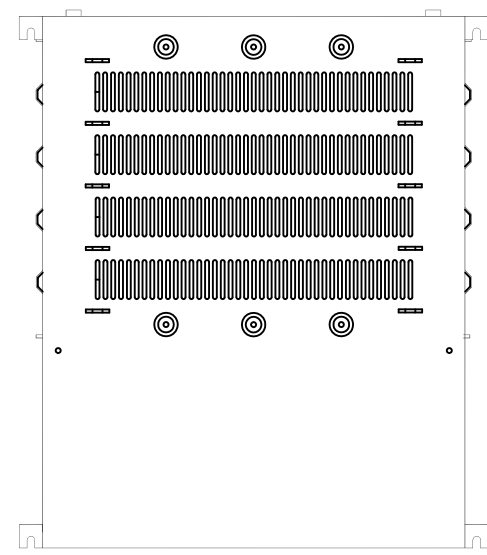
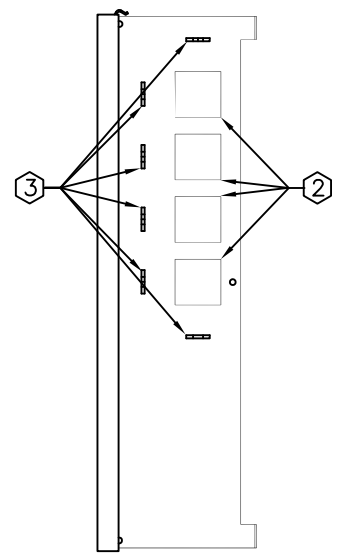
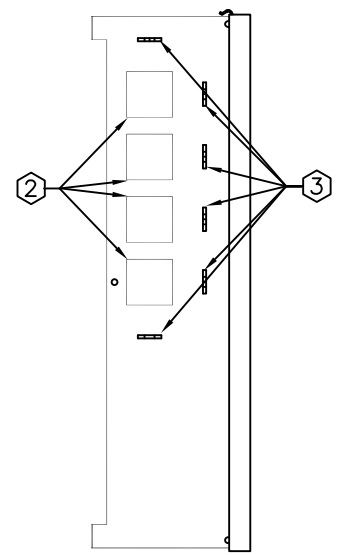
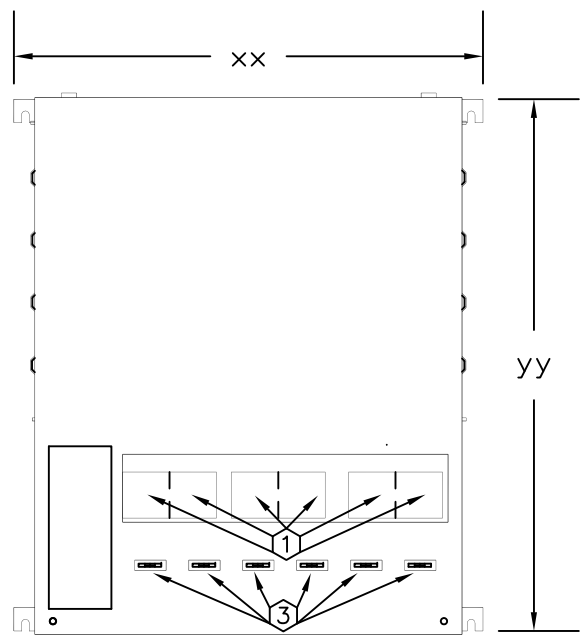
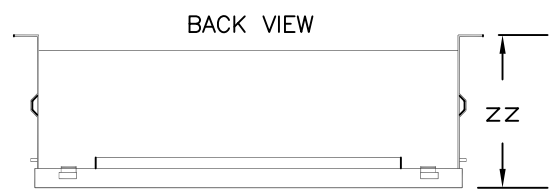
DATE:
21-OCT-08

SCALE:
N.T.S.

FW7R.6

[illegible]

**MEETS OR EXCEEDS: - CSA 22.2 NO. 203.1
- UL 183**



- ① SINGLE OR DUAL RECEPTACLE OPENING
- ② SINGLE OR DUAL RECEPTACLE KNOCKOUT
- ③ CABLE TIE POINT

NOTES:
16 GAUGE STEEL



CDN. PATENT – 1219307 U.S. PATENT – 4775802

[illegible]

100-5977 HAZELDEAN ROAD, OTTAWA, ONTARIO, CANADA K2S 1B9
TELEPHONE (613) 836-0300 FAX (613) 836-0391
TOLL-FREE (866) 233-5328 FAX (866) 933-1933
e-mail: support@electeonline.com

OWNERSHIP OF DOCUMENTS

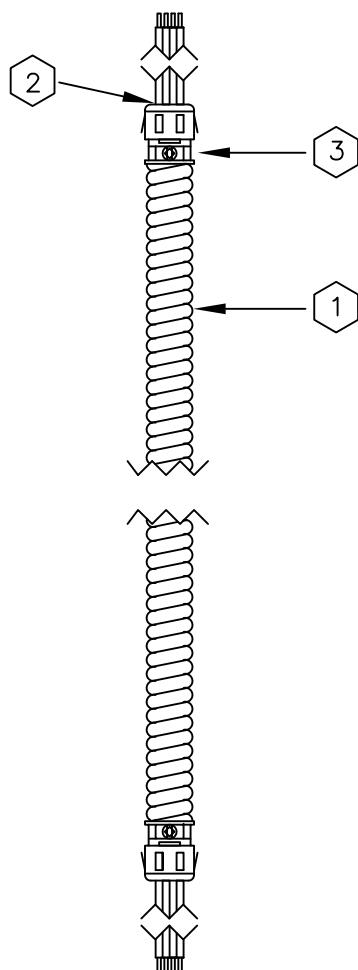
This drawing and accompanying information as instrument of service are the property of **ELECTEC**. Reproduction or use in whole or in part in any form whether the work for which they are presented is executed or not is forbidden without the express written permission of **ELECTEC**.

ENCLOSURE

Exxyyzz

DRAWN BY: J.Y.	APPROVED: D.H.
DATE: 12-SEP-07	SCALE: N.T.S.

Exxyyzz.0



- 1 "ULTRALX" AC90/MC or AC90 or MC LS 600V 90°C
(CSA 22.2 No. 51-95 and/or UL 1569)
- 2 ANTISHORT BUSHING
- 3 BOX CONNECTOR

"d" REPRESENTS CERTIFIED WIRING MATERIAL. I.E. "A" IS AC90
 "l" REPRESENTS LENGTH CODE I.E. "040" IS 04.0 METERS
 "nn" REPRESENTS NUMBER OF CONDUCTORS
 "t" REPRESENTS "S" 60" TAIL ON ONE END AND 8" TAIL ON OTHER END (BOTH ENDS STRIPPED)
 "T" 8" TAIL ON ONE END AND 8" TAIL ON OTHER END (BOTH ENDS STRIPPED)
 "ww" REPRESENTS WIRE GAUGE I.E. "12" 12 AWG
 "xx" REPRESENTS NUMBER OF STRANDS

**MANUFACTURED WIRING SYSTEM UTILIZING 12 AWG APPROVED ULTRALX CABLE.
INSTALLATION IN ACCORDANCE WITH THE CEC PART I OR THE NEC.
ACCEPTABLE FOR USE IN ENVIRONMENTAL AIR SPACES OTHER THAN DUCTS OR PLENUMS
PER CEC PART I 12-010(3) OR NEC 300-22(C)
MEETS OR EXCEEDS: - CSA 22.2 NO. 203.1
- UL 183**



LR 91749

CDN. PATENT - 1219307

U.S. PATENT - 4775802

[illegible]

100-5977 HAZELDEAN ROAD, OTTAWA, ONTARIO, CANADA K2S 1B9
TELEPHONE (613) 836-0300 FAX (613) 836-0391
TOLL-FREE (866) 233-5328 FAX (866) 933-1933
e-mail: support@electeconline.com

OWNERSHIP OF DOCUMENTS

This drawing and accompanying information as instrument of service are the property of **ELECTEC**. Reproduction or use in whole or in part in any form whether the work for which they are presented is executed or not is forbidden without the express written permission of **ELECTEC**.

"ULTRALX" HOMERUN

·Utnnwwxxllld/Utnnwwxxnnwwxxllld

DRAWN BY:
J.Y.

APPROVED:
D.H.

DATE:
10-DEC-08

SCALE:
N T S

Utnnwwxxlld.0


www.electeconline.com

ULTRALX® Dual-Listed AC90/MC Armoured Cable

Meeting the following requirements:

- CSA 22.2 No. 51-95 (AC90) for use in Canada
- UL 1569 (Type MC) for use in US



Applications

For use in service, feeder and branch circuits in commercial, industrial, multi-residential buildings and places of assembly. For exposed and concealed wiring in dry locations (90°C).

Intended for installation in accordance with the Canadian Electrical Code Part 1 or National Electrical Code (NEC) Article 330, or other applicable parts of the NEC; where appropriate.

Specification

PVC/Nylon Insulated Copper Conductors

14 AWG to 6 AWG (Solid or Stranded) 600 volts

Polyester Tape

Aluminum Interlocking Armour

Limited Smoke Rating (ST1)

Lightweight Construction

Special Considerations

Multiple Grounding Conductors

Oversized Neutral Conductors

Multi-Conductors (Multi-circuit)

Special requests can be made online at support@electeconline.com or by phone (613) 836-0300

ULTRALX Dual-Listed AC90/MC Armoured Cable Standard Product Information Solid Copper Conductors 150m reels	Product	Circuit	Neutral	Ground	Nominal OD	Weight (lbs/1000')
	14/2	1 - #14 blk	1 - #14 wht	1 - #14 bare	.45"	93
	14/3	2 - #14 blk, red	1 - #14 wht	1 - #14 bare	.47"	113
	14/4	3 - #14 blk, red, blu	1 - #14 wht	1 - #14 bare	.49"	132
	12/2	1 - #12 blk	1 - #12 wht	1 - #12 bare	.47"	122
	12/3	2 - #12 blk, red	1 - #12 wht	1 - #12 bare	.49"	150
	12/4	3 - #12 blk, red, blu	1 - #12 wht	1 - #12 bare	.53"	179
	10/2	1 - #10 blk	1 - #10 wht	1 - #10 bare	.53"	172
	10/3	2 - #10 blk, red	1 - #10 wht	1 - #10 bare	.57"	214
	10/4	3 - #10 blk, red, blu	1 - #10 wht	1 - #10 bare	.65"	281
	14/2 IG	1 - #14 blk	1 - #14 wht	2 - #14 bare, green	.47"	113
	12/2 IG	1 - #12 blk	1 - #12 wht	2 - #12 bare, green	.49"	150
	10/2 IG	1 - #10 blk	1 - #10 wht	2 - #10 bare, green	.57"	214


www.electeconline.com

ULTRALX® AC90 Armoured Cable

Meeting the following requirements:

- CSA 22.2 No. 51-95 (AC90) for use in Canada



Applications

For use in service, feeder and branch circuits in commercial, industrial, multi-residential buildings and places of assembly. For exposed and concealed wiring in dry locations (90°C).

Intended for installation in accordance with the Canadian Electrical Code Part 1.

Specification

PVC/Nylon Insulated Copper Conductors

14 AWG to 6 AWG (Solid or Stranded) 600 volts

Polyester Tape

Aluminum Interlocking Armour

Smaller OD and Lightweight Construction (*up to 15% lighter than traditional AC90 construction*)

Special Considerations

Multiple Grounding Conductors

Oversized Neutral Conductors

Multi-Conductors (Multi-circuit)

Special requests can be made online at support@electeconline.com or by phone (613) 836-0300

ULTRALX AC90 Armoured Cable Standard Product Information Solid Copper Conductors 150m reels	Product	Circuit	Neutral	Ground	Nom. OD	Weight (lbs/1000')
	14/2	1 - #14 blk	1 - #14 wht	1 - #14 bare	.43"	82
	14/3	2 - #14 blk, red	1 - #14 wht	1 - #14 bare	.45"	101
	14/4	3 - #14 blk, red, blu	1 - #14 wht	1 - #14 bare	.47"	120
	12/2	1 - #12 blk	1 - #12 wht	1 - #14 bare	.45"	96
	12/3	2 - #12 blk, red	1 - #12 wht	1 - #14 bare	.46"	124
	12/4	3 - #12 blk, red, blu	1 - #12 wht	1 - #14 bare	.49"	152
	10/2	1 - #10 blk	1 - #10 wht	1 - #12 bare	.49"	135
	10/3	2 - #10 blk, red	1 - #10 wht	1 - #12 bare	.52"	174
	10/4	3 - #10 blk, red, blu	1 - #10 wht	1 - #12 bare	.56"	215
	14/2 IG	1 - #14 blk	1 - #14 wht	2 - #14 bare, green	.45"	101
	12/2 IG	1 - #12 blk	1 - #12 wht	2 - #14 bare, #12 green	.46"	124
	10/2 IG	1 - #10 blk	1 - #10 wht	2 - #12 bare, #10 green	.52"	174