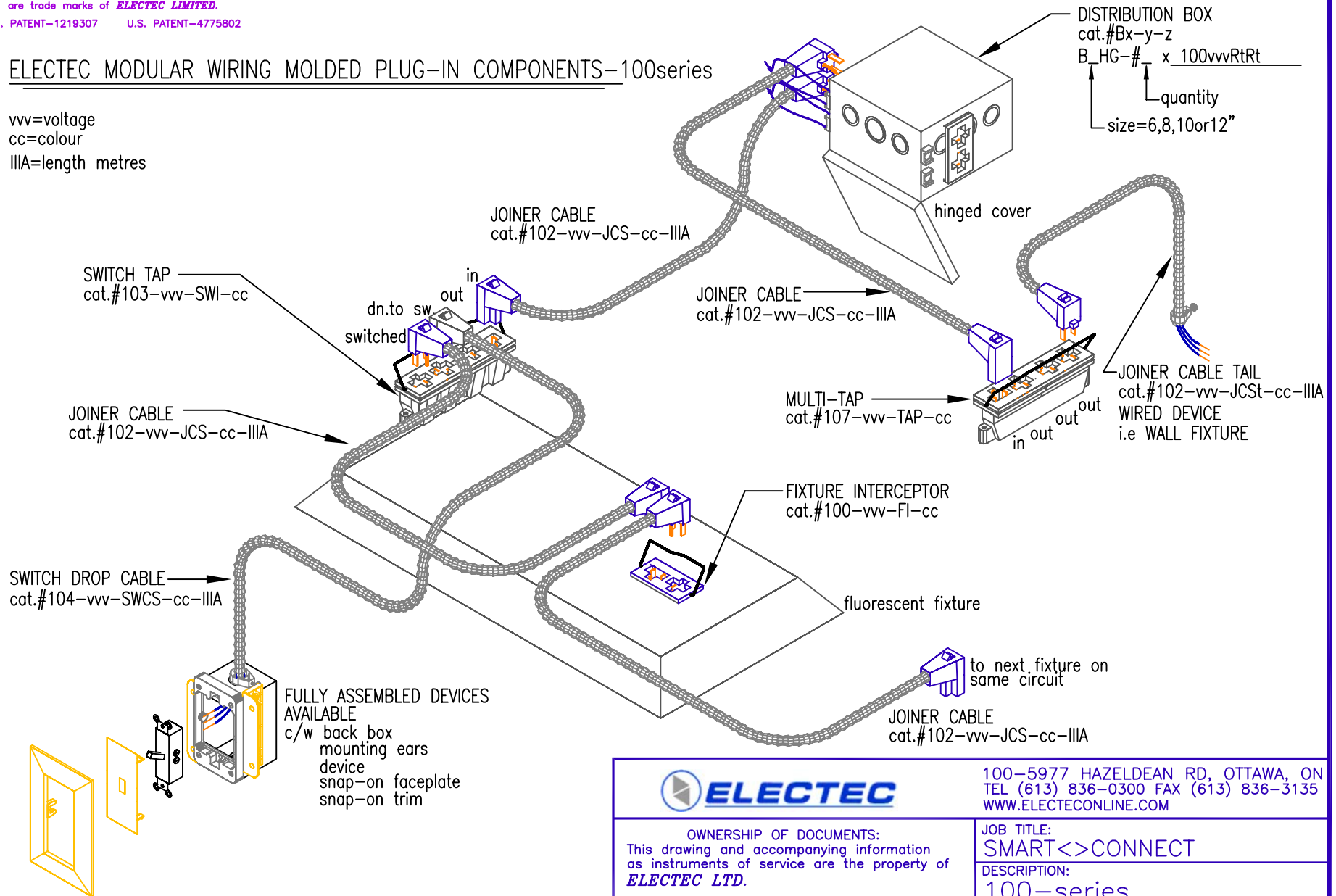


"SMART<>CONNECT", "SMART LIGHT" & "ULTRALX"
are trade marks of **ELECTEC LIMITED**.
CDN. PATENT-1219307 U.S. PATENT-4775802

ELECTEC MODULAR WIRING MOLDED PLUG-IN COMPONENTS-100series

vvv=voltage
cc=colour
IIIA=length metres



100-5977 HAZELDEAN RD, OTTAWA, ON
TEL (613) 836-0300 FAX (613) 836-3135
WWW.ELECTECONLINE.COM

OWNERSHIP OF DOCUMENTS:
This drawing and accompanying information
as instruments of service are the property of
ELECTEC LTD.

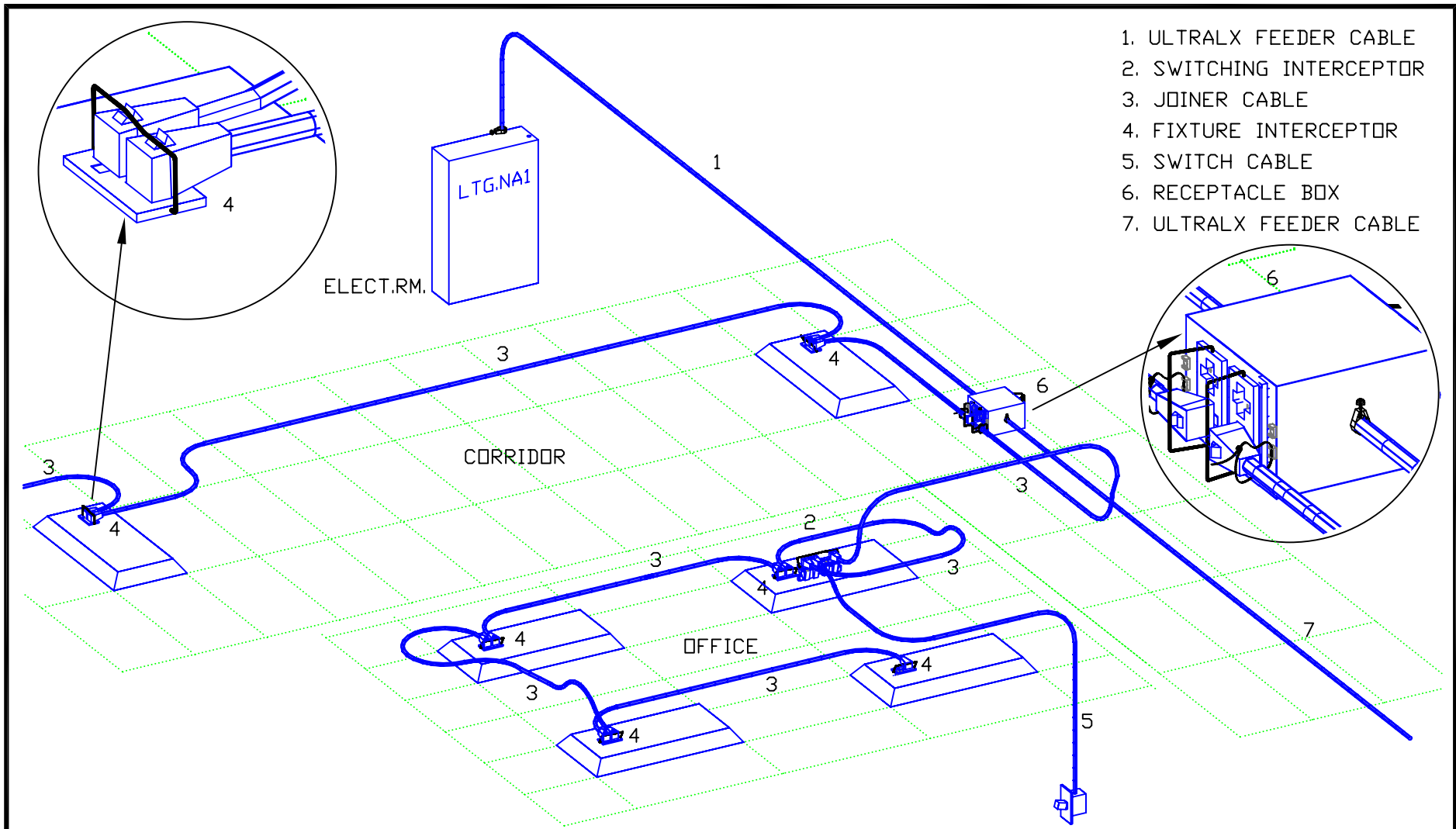
Reproduction or use in whole or in part in any
form whether the work for which they are
presented be executed or not is forbidden
without the express written permission of
ELECTEC LTD.

JOB TITLE:
SMART<>CONNECT

DESCRIPTION:
100-series


DRAWN BY: APPROVED: DWG #

DATE: SCALE:



- 1. ULTRALX FEEDER CABLE
- 2. SWITCHING INTERCEPTOR
- 3. JOINER CABLE
- 4. FIXTURE INTERCEPTOR
- 5. SWITCH CABLE
- 6. RECEPTACLE BOX
- 7. ULTRALX FEEDER CABLE

ITEM	DESCRIPTION	MANUFACTURER	PART No.	REMARKS



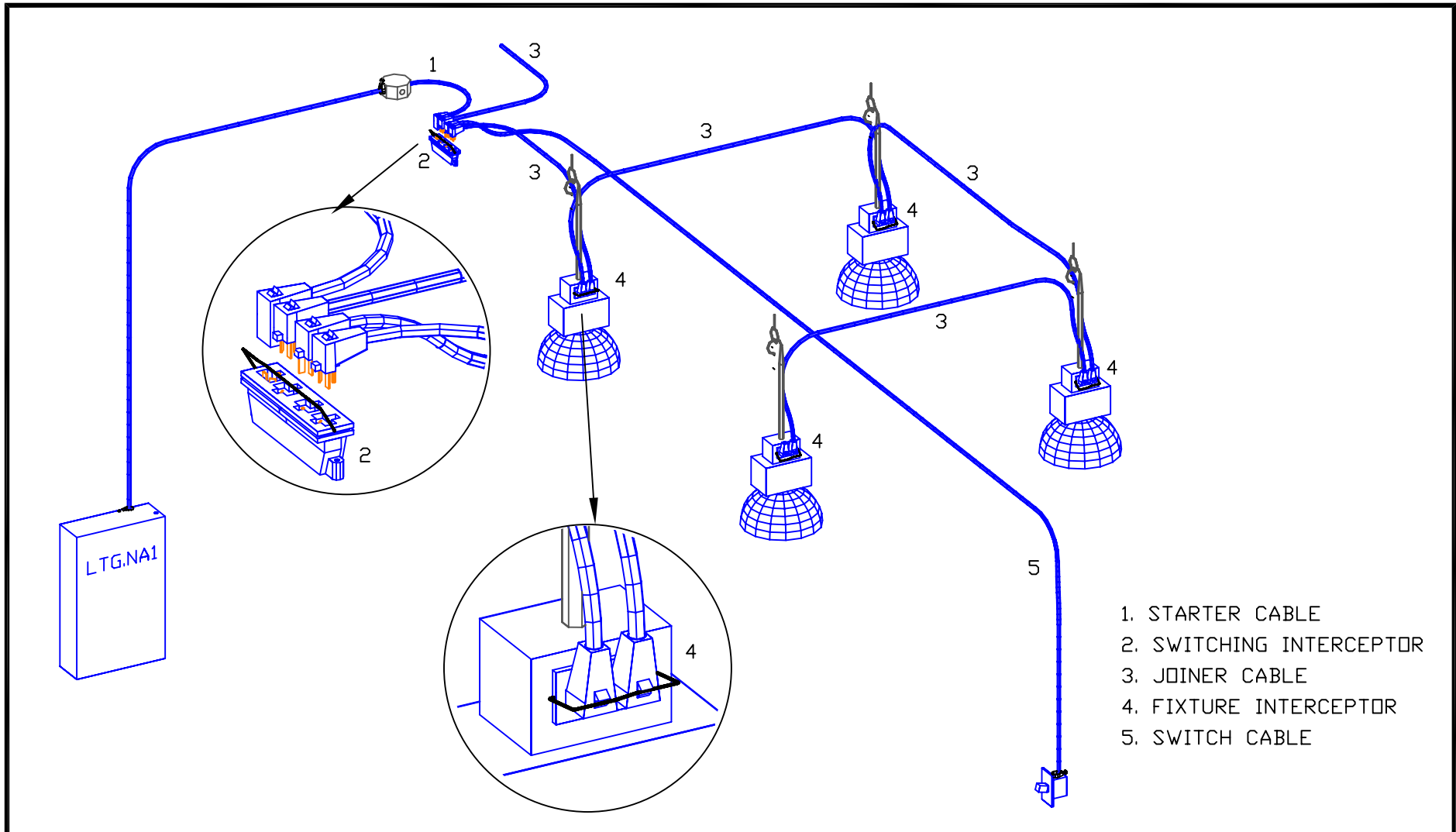
100-5977 HAZELDEAN RD, OTTAWA, ON
 TEL: (613) 836-0300 FAX: (613) 836-3135
 WWW.ELECTECONLINE.COM

OWNERSHIP OF DOCUMENTS:
 This drawing and accompanying information as instruments of service are the property of **ELECTEC LTD.**
 Reproduction or use in whole or in part in any form whether the work for which they are presented be executed or not is forbidden without the express written permission of **ELECTEC LTD.**

JOB TITLE:
SMART<>CONNECT


DESCRIPTION:
LIGHTING-COMMERCIAL

DRAWN BY:	APPROVED:	DWG #
DATE:	SCALE:	



1. STARTER CABLE
2. SWITCHING INTERCEPTOR
3. JOINER CABLE
4. FIXTURE INTERCEPTOR
5. SWITCH CABLE

ITEM	DESCRIPTION	MANUFACTURER	PART No.	REMARKS



OWNERSHIP OF DOCUMENTS:
This drawing and accompanying information as instruments of service are the property of **ELECTEC LTD.**

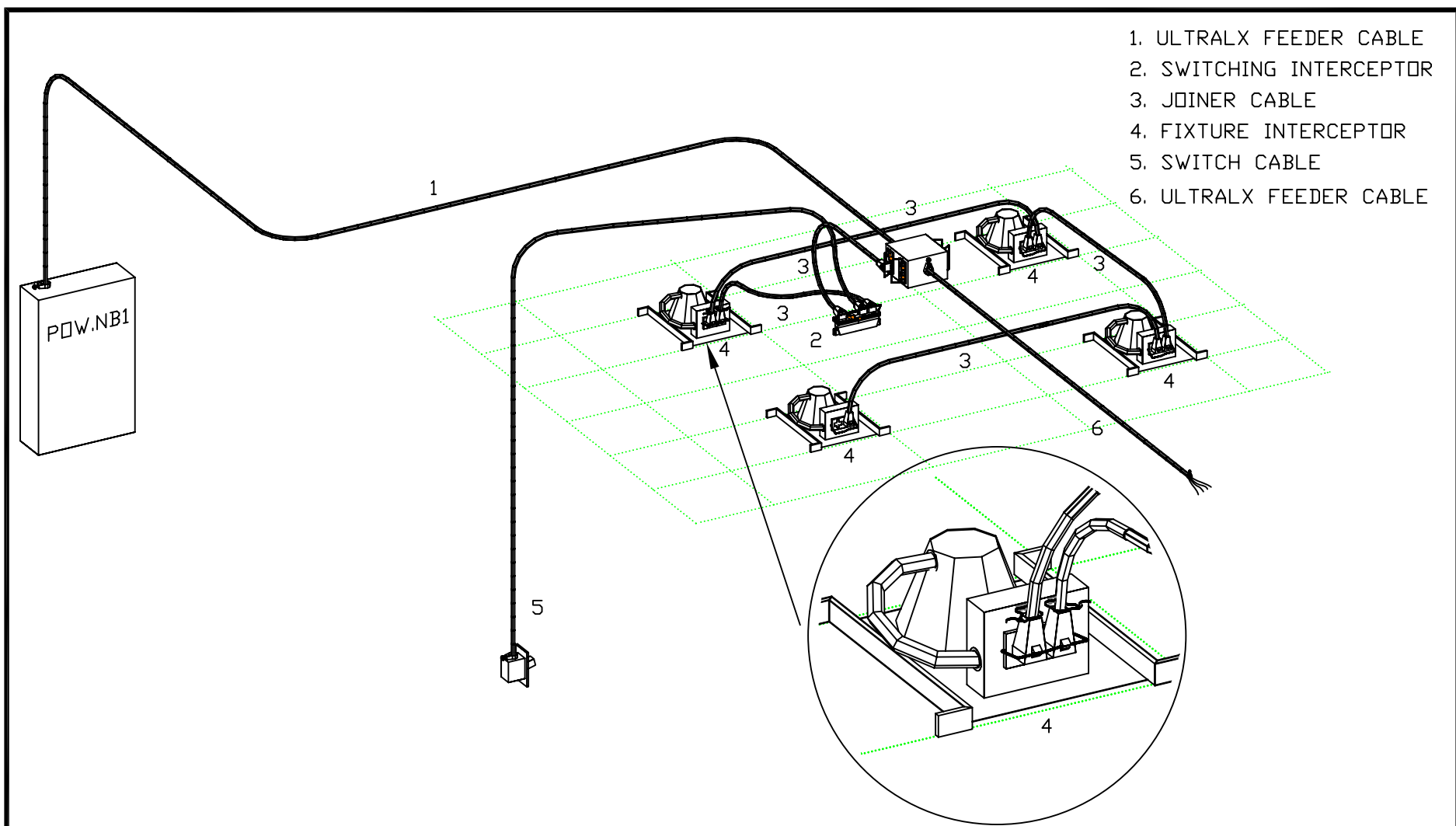
Reproduction or use in whole or in part in any form whether the work for which they are presented be executed or not is forbidden without the express written permission of **ELECTEC LTD.**

100-5977 HAZELDEAN RD, OTTAWA, ON
TEL: (613) 836-0300 FAX: (613) 836-3135
WWW.ELECTECONLINE.COM

JOB TITLE:
SMART<>CONNECT


DESCRIPTION:
LIGHTING-HIGHBAY

DRAWN BY: DRAWN	APPROVED: APPR	DWG #
DATE: DATE	SCALE: SCALE	



1. ULTRALX FEEDER CABLE
2. SWITCHING INTERCEPTOR
3. JOINER CABLE
4. FIXTURE INTERCEPTOR
5. SWITCH CABLE
6. ULTRALX FEEDER CABLE

ITEM	DESCRIPTION	MANUFACTURER	PART No.	REMARKS



100-5977 HAZELDEAN RD, OTTAWA, ON
 TEL: (613) 836-0300 FAX: (613) 836-3135
 WWW.ELECTECONLINE.COM

OWNERSHIP OF DOCUMENTS:
 This drawing and accompanying information as instruments of service are the property of **ELECTEC LTD.**
 Reproduction or use in whole or in part in any form whether the work for which they are presented be executed or not is forbidden without the express written permission of **ELECTEC LTD.**

JOB TITLE:
 SMART<>CONNECT

DESCRIPTION:
 LIGHTING-RECESSEDPOTS

DRAWN BY:	APPROVED:	DWG #
DATE:	SCALE:	