

- ① BRASS MALE PIN
- ② MOULDED THERMOPLASTIC
- ③ CERTIFIED WIRING MATERIAL
- ④ RETAINING CLIP

WHERE "cc" REPRESENTS COLOUR CODE I.E. "BK" IS BLACK

ACCEPTABLE FOR USE IN ENVIRONMENTAL AIR SPACES OTHER THAN DUCTS OR PLENUMS.
 SYSTEM IS RATED FOR CONNECTION TO A GROUNDED 125/250V BRANCH CIRCUIT.

MEETS OR EXCEEDS: - CSA 22.2 NO. 182.3
 - CSA 22.2 NO. 203.1
 - UL 1977
 - UL 183



125/250 Volt 20 Amp

CDN. PATENT - 1219307

U.S. PATENT - 4775802

ITEM	DESCRIPTION	PART#/POSITION	REMARKS
3	GREEN	1	GROUND
	BLACK/YELLOW TRACER	2	DEDICATED LINE
	WHITE/RED TRACER	3	NEUTRAL
	RED	4	LINE CCT. 1/PHASE A
	WHITE/BLACK TRACER	5	NEUTRAL
	BLACK	6	LINE CCT. 2/PHASE B
	WHITE/BLUE TRACER	7	NEUTRAL
	BLUE	8	LINE CCT. 3/PHASE C
	WHITE/YELLOW TRACER	9	NEUTRAL



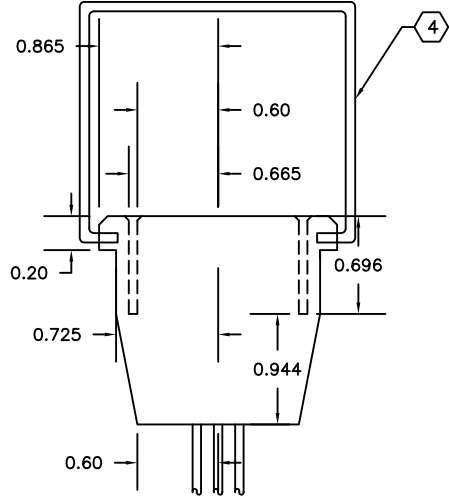
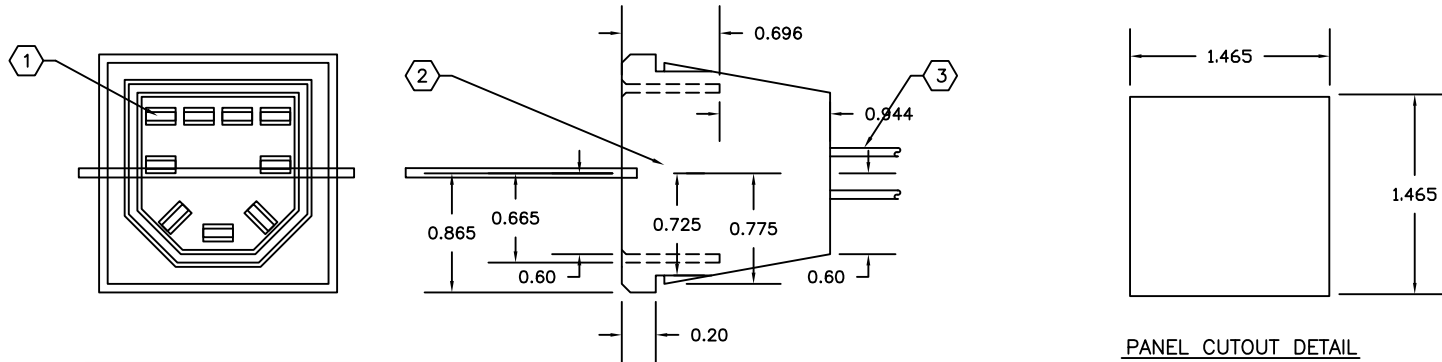
100-5977 HAZELDEAN ROAD, OTTAWA, ONTARIO, CANADA K2S 1B9
 TELEPHONE (613) 836-0300 FAX (613) 836-0391
 TOLL-FREE (866) 233-5328 FAX (866) 933-1933
 e-mail: support@electeonline.com

OWNERSHIP OF DOCUMENTS
 This drawing and accompanying information as instrument of service are the property of **ELECTEC**.
 Reproduction or use in whole or in part in any form whether the work for which they are presented is executed or not is forbidden without the express written permission of **ELECTEC**.

SINGLE PLUG

w4Pcc

DRAWN BY: J.Y.	APPROVED: D.H.	w4P.6
DATE: 21-OCT-08	SCALE: N.T.S.	



- ① BRASS FEMALE TERMINAL
- ② MOULDED THERMOPLASTIC
- ③ CERTIFIED WIRING MATERIAL

RETAINING CLIP

WHERE "cc" REPRESENTS COLOUR CODE I.E. "BK" IS BLACK

**ACCEPTABLE FOR USE IN ENVIRONMENTAL AIR SPACES OTHER THAN DUCTS OR PLENUMS.
SYSTEM IS RATED FOR CONNECTION TO A GROUNDED 125/250V BRANCH CIRCUIT.**

MEETS OR EXCEEDS: - CSA 22.2 NO. 182.3
- CSA 22.2 NO. 203.1
- UL 1977
- UL 183




125/250 Volt 20 Amp

CDN. PATENT - 1219307

U.S. PATENT - 4775802

ITEM	DESCRIPTION	PART#/POSITION	REMARKS
3	GREEN	1	GROUND
	BLACK/YELLOW TRACER	2	DEDICATED LINE
	WHITE/RED TRACER	3	NEUTRAL
	RED	4	LINE CCT. 1/PHASE A
	WHITE/BLACK TRACER	5	NEUTRAL
	BLACK	6	LINE CCT. 2/PHASE B
	WHITE/BLUE TRACER	7	NEUTRAL
	BLUE	8	LINE CCT. 3/PHASE C
	WHITE/YELLOW TRACER	9	NEUTRAL



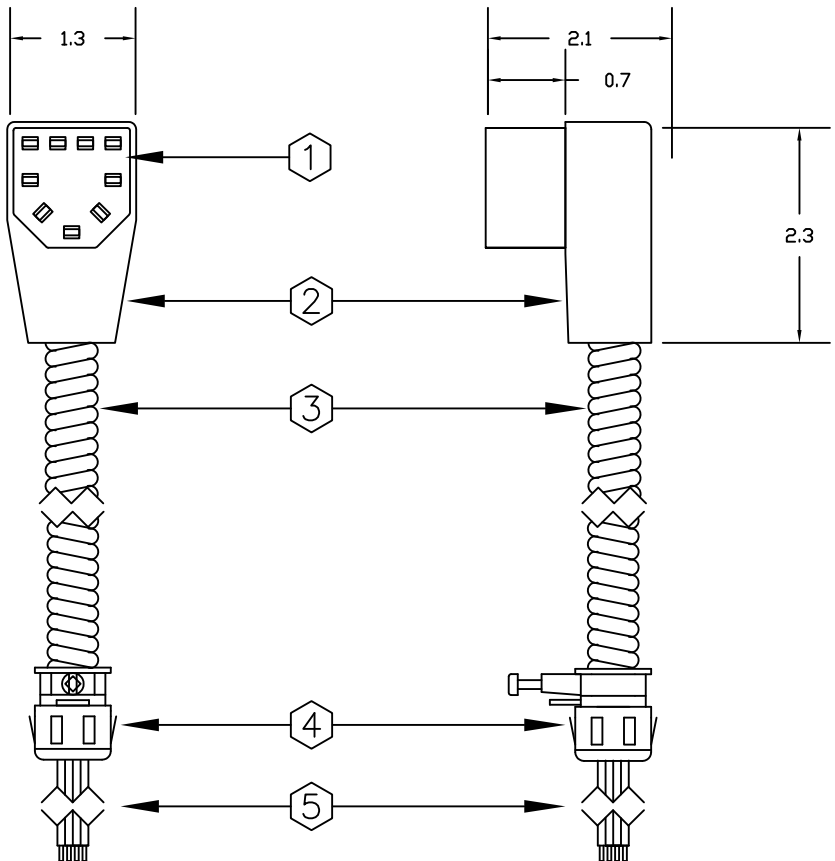
100-5977 HAZELDEAN ROAD, OTTAWA, ONTARIO, CANADA K2S 1B9
 TELEPHONE (613) 836-0300 FAX (613) 836-0391
 TOLL-FREE (866) 233-5328 FAX (866) 933-1933
 e-mail: support@electeonline.com

SINGLE RECEPTACLE

w4Rcc

DRAWN BY: J.Y.	APPROVED: D.H.	w4R.5
DATE: 21-OCT-08	SCALE: N.T.S.	

OWNERSHIP OF DOCUMENTS
 This drawing and accompanying information as instrument of service are the property of **ELECTEC**.
 Reproduction or use in whole or in part in any form whether the work for which they are presented is executed or not is forbidden without the express written permission of **ELECTEC**.



- ① BRASS TERMINAL
- ② MOULDED THERMOPLASTIC
- ③ "ULTRALX" AC90/MC or AC90 or MC LS 600V 90°C (CSA 22.2 No. 51-95 and/or UL 1569)
- ④ LOCKNUTLESS BOX CONNECTOR 1/2" K.O.
- ⑤ TAILS WITH STRIPPED ENDS

WHERE "cc" REPRESENTS COLOUR CODE I.E. "BK" IS BLACK
 WHERE "d" REPRESENTS CERTIFIED WIRING MATERIAL I.E. "A" IS AC90
 WHERE "l" REPRESENTS LENGTH CODE I.E. "040" IS 04.0 METERS
 WHERE "w" REPRESENTS NUMBER OF WIRES FROM 3 TO 9

SYSTEM IS RATED FOR CONNECTION TO A GROUNDED 125/250V BRANCH CIRCUIT.
MANUFACTURED WIRING SYSTEM UTILIZING 12 AWG APPROVED ULTRALX CABLE.
INSTALLATION IN ACCORDANCE WITH THE CEC PART I OR THE NEC.
ACCEPTABLE FOR USE IN ENVIRONMENTAL AIR SPACES OTHER THAN DUCTS OR PLENUMS
PER CEC PART I 12-010(3) OR NEC 300-22(C)
MEETS OR EXCEEDS: - CSA 22.2 NO. 203.1
- UL 183



125/250 Volt 20 Amp

CDN. PATENT - 1219307

U.S. PATENT - 4775802

ITEM	DESCRIPTION	PART#/POSITION	REMARKS
3	BARE	1	GROUND
	BLACK/YELLOW TRACER	2	DEDICATED LINE
	WHITE/RED TRACER	3	NEUTRAL
	RED	4	LINE CCT. 1/PHASE A
	WHITE/BLACK TRACER	5	NEUTRAL
	BLACK	6	LINE CCT. 2/PHASE B
	WHITE/BLUE TRACER	7	NEUTRAL
	BLUE	8	LINE CCT. 3/PHASE C
	WHITE/YELLOW TRACER	9	NEUTRAL



100-5977 HAZELDEAN ROAD, OTTAWA, ONTARIO, CANADA K2S 1B9
 TELEPHONE (613) 836-0300 FAX (613) 836-0391
 TOLL-FREE (866) 233-5328 FAX (866) 933-1933
 e-mail: support@electeonline.com

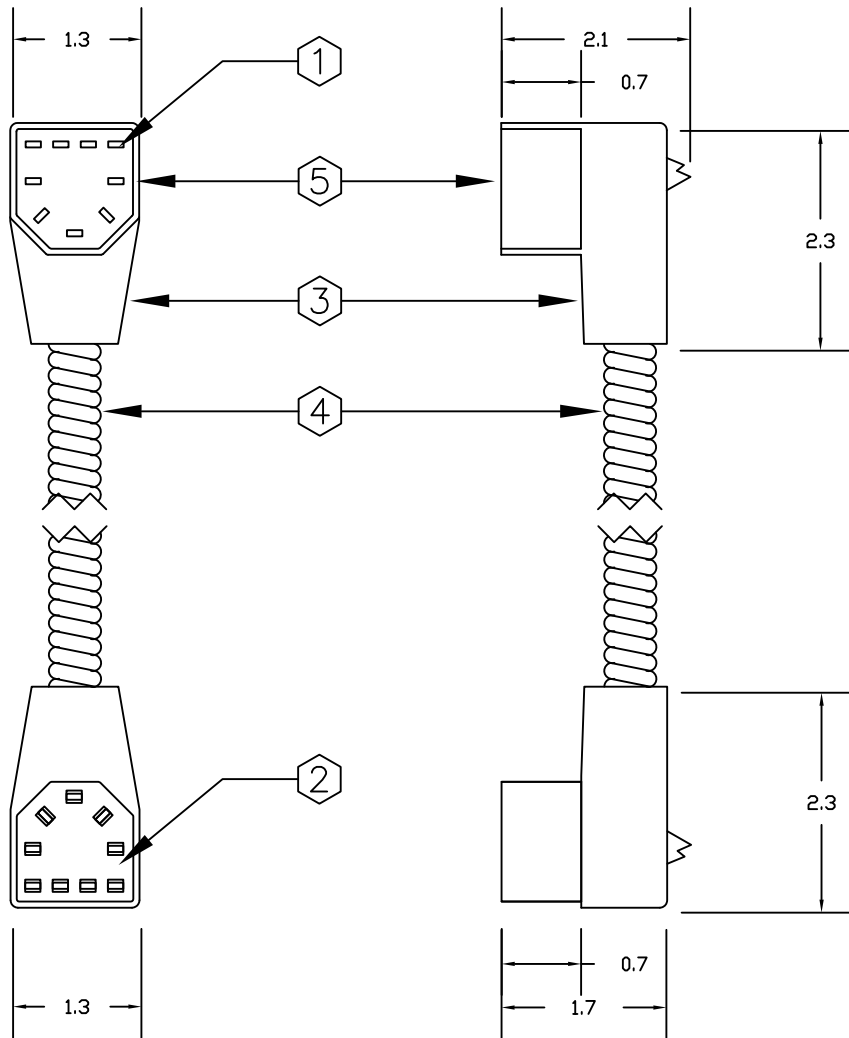
OWNERSHIP OF DOCUMENTS
 This drawing and accompanying information as instrument of service are the property of **ELECTEC**.
 Reproduction or use in whole or in part in any form whether the work for which they are presented be executed or not is forbidden without the express written permission of **ELECTEC**.

STARTER CABLE

w4FTccllld

DRAWN BY: J.Y.	APPROVED: D.H.
DATE: 10-DEC-08	SCALE: N.T.S.

w4FT.2



- ① BRASS BLADE
- ② BRASS TERMINAL
- ③ MOULDED THERMOPLASTIC
- ④ "ULTRALX" AC90/MC or AC90 or MC LS 600V 90°C (CSA 22.2 No. 51-95 and/or UL 1569)
- ⑤ SHROUD

WHERE "cc" REPRESENTS COLOUR CODE I.E. "BK" IS BLACK
 WHERE "d" REPRESENTS CERTIFIED WIRING MATERIAL I.E. "A" IS AC90
 WHERE "l" REPRESENTS LENGTH CODE I.E. "040" IS 04.0 METERS
 WHERE "w" REPRESENTS NUMBER OF WIRES FROM 3 TO 9

**SYSTEM IS RATED FOR CONNECTION TO A GROUNDED 125/250V BRANCH CIRCUIT.
 MANUFACTURED WIRING SYSTEM UTILIZING 12 AWG APPROVED ULTRALX CABLE.
 INSTALLATION IN ACCORDANCE WITH THE CEC PART I OR THE NEC.
 ACCEPTABLE FOR USE IN ENVIRONMENTAL AIR SPACES OTHER THAN DUCTS OR PLENUMS
 PER CEC PART I 12-010(3) OR NEC 300-22(C)
 MEETS OR EXCEEDS: - CSA 22.2 NO. 203.1
 - UL 183**



125/250 Volt 20 Amp

CDN. PATENT - 1219307

U.S. PATENT - 4775802

ITEM	DESCRIPTION	PART#/POSITION	REMARKS
4	BARE	1	GROUND
	BLACK/YELLOW TRACER	2	DEDICATED LINE
	WHITE/RED TRACER	3	NEUTRAL
	RED	4	LINE CCT. 1/PHASE A
	WHITE/BLACK TRACER	5	NEUTRAL
	BLACK	6	LINE CCT. 2/PHASE B
	WHITE/BLUE TRAC-R	7	NEUTRAL
	BLUE	8	LINE CCT. 3/PHASE C
	WHITE/YELLOW TRACER	9	NEUTRAL



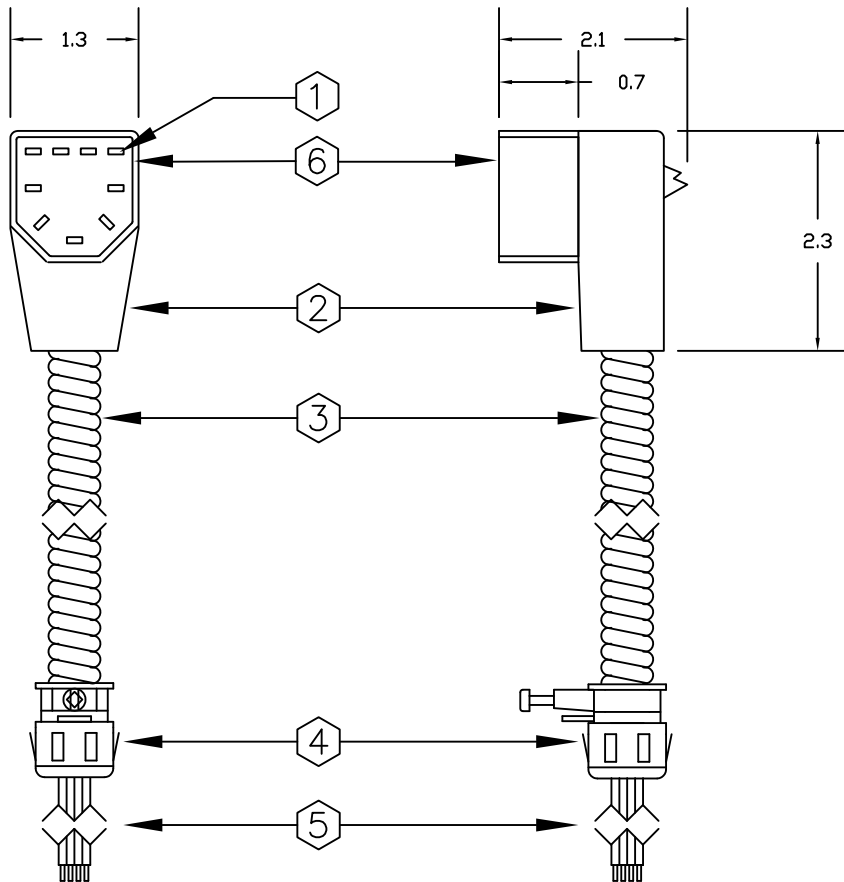
100-5977 HAZELDEAN ROAD, OTTAWA, ONTARIO, CANADA K2S 1B9
 TELEPHONE (613) 836-0300 FAX (613) 836-0391
 TOLL-FREE (866) 233-5328 FAX (866) 933-1933
 e-mail: support@electeonline.com

OWNERSHIP OF DOCUMENTS
 This drawing and accompanying information as instrument of service are the property of **ELECTEC**.
 Reproduction or use in whole or in part in any form whether the work for which they are presented be executed or not is forbidden without the express written permission of **ELECTEC**.

JOINER CABLE

w4MFccllld

DRAWN BY: J.Y.	APPROVED: D.H.	w4MF.8
DATE: 10-DEC-08	SCALE: N.T.S.	



- ① BRASS BLADE
- ② MOULDED THERMOPLASTIC
- ③ "ULTRALX" AC90/MC or AC90 or MC LS 600V 90°C (CSA 22.2 No. 51-95 and/or UL 1569)
- ④ LOCKNUTLESS BOX CONNECTOR 1/2" K.O.
- ⑤ TAILS WITH STRIPPED ENDS
- ⑥ SHROUD

WHERE "cc" REPRESENTS COLOUR CODE I.E. "BK" IS BLACK
 WHERE "d" REPRESENTS CERTIFIED WIRING MATERIAL I.E. "A" IS AC90
 WHERE "l" REPRESENTS LENGTH CODE I.E. "040" IS 04.0 METERS
 WHERE "w" REPRESENTS NUMBER OF WIRES FROM 3 TO 9

**SYSTEM IS RATED FOR CONNECTION TO A GROUNDED 125/250V BRANCH CIRCUIT.
 MANUFACTURED WIRING SYSTEM UTILIZING 12 AWG APPROVED ULTRALX CABLE.
 INSTALLATION IN ACCORDANCE WITH THE CEC PART I OR THE NEC.
 ACCEPTABLE FOR USE IN ENVIRONMENTAL AIR SPACES OTHER THAN DUCTS OR PLENUMS
 PER CEC PART I 12-010(3) OR NEC 300-22(C)
 MEETS OR EXCEEDS: - CSA 22.2 NO. 203.1
 - UL 183**



125/250 Volt 20 Amp

CDN. PATENT - 1219307

U.S. PATENT - 4775802

ITEM	DESCRIPTION	PART#/POSITION	REMARKS
3	BARE	1	GROUND
	BLACK/YELLOW TPACER	2	DEDICATED LINE
	WHITE/RED TRACER	3	NEUTRAL
	RED	4	LINE CCT. 1/PHASE A
	WHITE/BLACK TRACER	5	NEUTRAL
	BLACK	6	LINE CCT. 2/PHASE B
	WHITE/BLUE TRACER	7	NEUTRAL
	BLUE	8	LINE CCT. 3/PHASE C
	WHITE/YELLOW TRACER	9	NEUTRAL



100-5977 HAZELDEAN ROAD, OTTAWA, ONTARIO, CANADA K2S 1B9
 TELEPHONE (613) 836-0300 FAX (613) 836-0391
 TOLL-FREE (866) 233-5328 FAX (866) 933-1933
 e-mail: support@electeonline.com

OWNERSHIP OF DOCUMENTS

This drawing and accompanying information as instrument of service are the property of **ELECTEC**.
 Reproduction or use in whole or in part in any form whether the work for which they are presented be executed or not is forbidden without the express written permission of **ELECTEC**.

DROP CABLE

w4MTccllId

DRAWN BY: J.Y.	APPROVED: D.H.	w4MT.8
DATE: 10-DEC-08	SCALE: N.T.S.	