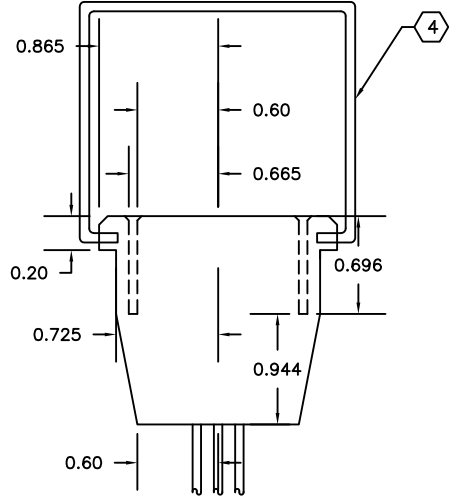


PANEL CUTOUT DETAIL



- ① BRASS FEMALE TERMINAL
- ② MOULDED THERMOPLASTIC
- ③ CERTIFIED WIRING MATERIAL

RETAINING CLIP

WHERE "cc" REPRESENTS COLOUR CODE I.E. "BK" IS BLACK

ACCEPTABLE FOR USE IN ENVIRONMENTAL AIR SPACES OTHER THAN DUCTS OR PLENUMS.  
 SYSTEM IS RATED FOR CONNECTION TO A GROUNDED 125/250V BRANCH CIRCUIT.

- MEETS OR EXCEEDS: - CSA 22.2 NO. 182.3
- CSA 22.2 NO. 203.1
- UL 1977
- UL 183




125/250 Volt 20 Amp

CDN. PATENT - 1219307

U.S. PATENT - 4775802

ITEM	DESCRIPTION	PART#/POSITION	REMARKS
3	GREEN	1	GROUND
	GREEN/YELLOW TRACER	2	ISOLATED GROUND
	WHITE/RED TRACER	3	NEUTRAL
	RED	4	LINE CCT. 1/PHASE A
	WHITE/BLACK TRACER	5	NEUTRAL
	BLACK	6	LINE CCT. 2/PHASE B
	WHITE/BLUE TRACER	7	NEUTRAL
	BLUE	8	LINE CCT. 3/PHASE C
	GREEN/ORANGE TRACER	9	ISOLATED GROUND



100-5977 HAZELDEAN ROAD, OTTAWA, ONTARIO, CANADA K2S 1B9  
 TELEPHONE (613) 836-0300 FAX (613) 836-0391  
 TOLL-FREE (866) 233-5328 FAX (866) 933-1933  
 e-mail: support@electeonline.com

**OWNERSHIP OF DOCUMENTS**

This drawing and accompanying information as instrument of service are the property of **ELECTEC**.  
 Reproduction or use in whole or in part in any form whether the work for which they are presented is executed or not is forbidden without the express written permission of **ELECTEC**.

SINGLE RECEPTACLE

w2Rcc

DRAWN BY: J.Y.	APPROVED: D.H.	w2R.8
DATE: 21-OCT-08	SCALE: N.T.S.	