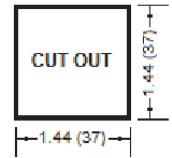
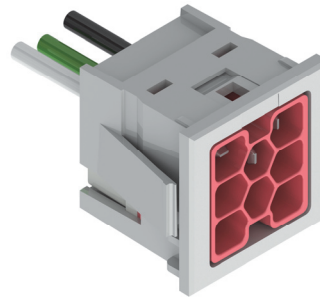


Plug

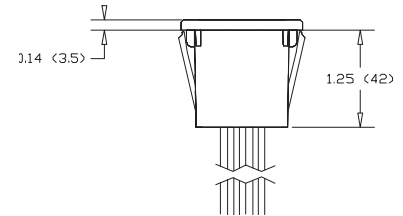
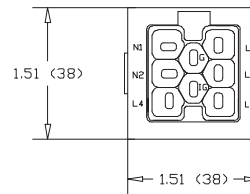
Provides connection to equipment such as light fixtures, furniture systems, raised floor devices and wall outlets.
 Flush mounted device for use in enclosures and junction boxes – includes leads prepared for field connection.

Features and Benefits:

- **ELECTEC EZ-Wiring**[®] components are UL Listed to be in compliance with UL 183 – Manufactured Wiring Systems (QQVX) and CSA Certified to be in compliance with CSA 22.2 No. 203-1 - Manufactured Wiring Systems.
- Robust terminal design exceeds 470Amp for 4 seconds.
- EZ-Wiring Connectors are integrally moulded (fully encapsulated) utilizing high impact Halogen-free, Eco-Friendly, Low Smoke, UL94-V0 rated, Oxygen Index - 33 %, RoHS-compliant polymers for superior strength, reliability and safety. Dielectric Withstand 3000Vac.
- Mating connectors are self-latching and shrouded for added protection.
- Uniquely-keyed and colour-coded to clearly indicate ratings and provide safe, simple, error-free connectivity. Only connectors having identical colours can plug together properly.
- Approved "Ballast Disconnect Means" per NEC 410.73(g) and CEC Part 1 30-308(4).
- Suitable for use in environmental air handling spaces (plenums) per NEC 300-22(c) and CEC Part 1 12-010(3)
- Acceptable for interrupting current (make or break) under full load.



Ultra-Compact, flush-mounted, multiple applications
 Consult **EZ-Wiring**[®] Configuration Matrix



Ordering Information

Catalogue No.; **1H – VC – LNGO – P III T W ttt XYZ**

1H	__	__	__	P	X	X	X	__	__	__	__
----	----	----	----	---	---	---	---	----	----	----	----

VC System **22** = 125/250V 20A, **2D** = 125/250V 20A + Control,
42 = 277/480V 20A, **4D** = 277/480V 20A + Control,
62 = 347/600V 20A, **6D** = 347/600V 20A + Control

LNGO Application	Power Distribution	Switch	DALI/Class 1 (Control Wiring)
3w	1110 = (L,N,G)	1011 = 1P Switch	
4w	2110 = (2L,N,G)	1111 = Switch w/ Neutral	
4w	1120 = (L,N,G,IG)	1012 = 3, 4-Way Switch	
5w	2210 = (2L,2N,G)		1112 = 1 circuit + control (L,N,G,2C)
5w	3110 = (3L,N,G)		
6w	3120 = (3L,N,G,IG)		
7w	3310 = (3L,3N,G)		
7w	4210 = (4L,2N,G)		3112 = 3 circuit + control (3L,N,G,2C)
8w	3320 = (3L,3N,G,IG)		
8w	4220 = (4L,2N,G,IG)		

- III** Cable Length in dm. **XXX** = not applicable
- T** Cable Type **X** = not applicable
- W** (W) Wire Gauge **0** = #10AWG, **2** = #12AWG, **4** = #14AWG, **6** = #16AWG, **8** = #18AWG
- ttt** (ttt) Tail Length **020** = 20cm (8in), **025** = 25cm (10in), **030** = 30cm (12in), **045** = 45cm (18in)
- XYZ** (X) Wire Type **E** = TWN/TEWN, **F** = TFN, **R** = R90, **T** = THHN/T90
 (Y) Cord Colour **X** = not applicable, **blank** = none
 (Z) Other Options **W** = Wire connector, **blank** = none

Adhere to all Code requirements and carefully follow installation instructions

