

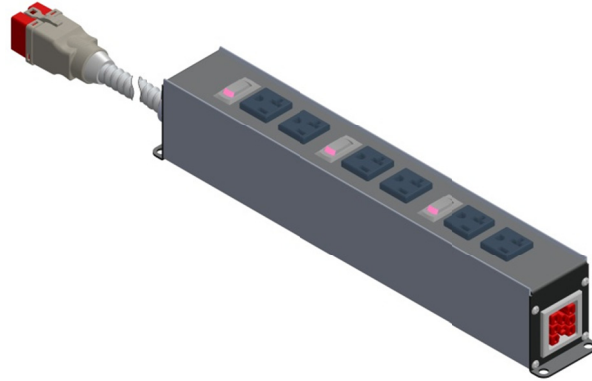
Power Strip

Delivers NEMA 5-20R convenience outlets in a multi-circuit, switched or non-switched modular enclosure.

Power supply end is an EZ-Wiring Drop Cable. Available with an EZ-Wiring Receptacle for neighbouring connections.

Specifications

- Constructed using ULTRALX® MC/AC-90 cable, minimum 12AWG conductors rated 600V 20A.
- Available in SOOW-type cord where acceptable.
- Connectors are integrally moulded for superior strength and reliability.
- Mating connectors are self-latching and shrouded for added safety and protection.
- Uniquely-keyed, colour-coded mating connectors ensure safe, simple and error-free connectivity.
- Robust terminals deliver excellent electrical performance.
- Manufactured with Eco-Friendly Halogen-free RoHS-compliant materials.
- UL 183 and CSA 22.2 No 203.1 certified Manufactured Wiring System
- Approved for luminaire disconnect per NEC 410.73(g) and CEC Part 1 30-308(4)
- Acceptable for use in environmental air handling spaces per NEC 300-22(c) and CEC Part 1 12-010(3)



Ordering Information

Catalogue No.	1H – <u>VC</u> – <u>LNGO</u> – PS <u>X Y Z</u> – <u>III</u> <u>A</u>	
<u>VC</u> System	<u>22</u> = 125/250V 20A, <u>21</u> = 125/250V 15A	
<u>LNGO</u> Application	Power Distribution	
	8w <u>4220</u> = (4L 2N 2G)	5w <u>2210</u> = (2L 2N G)
	8w <u>3320</u> = (3L 3N 2G)	5w <u>3110</u> = (3L N G)
	7w <u>4210</u> = (4L 2N G)	4w <u>2110</u> = (2L N G)
	6w <u>2220</u> = (2L 2N 2G)	3w <u>1110</u> = (L N G)
<u>X</u> Switching option	<u>0</u> = Unswitched, <u>1</u> = Switch per circuit, <u>2</u> = Illuminated switch per circuit	
<u>Y</u> # 5-20R/cct	<u>1</u> , <u>2</u> , <u>3</u> or <u>4</u>	
<u>Z</u> End Receptacle option	<u>0</u> = none, <u>1</u> = EZ-Wiring Receptacle included	
<u>III</u> Cable Length	eg. <u>040</u> = 4.0m	
<u>A</u> Cable Type	<u>A</u> = Standard Armoured Cable	<u>C</u> = Flexible Cord
	<u>H</u> = Halogen Free Armoured Cable	

