

Multi Tap

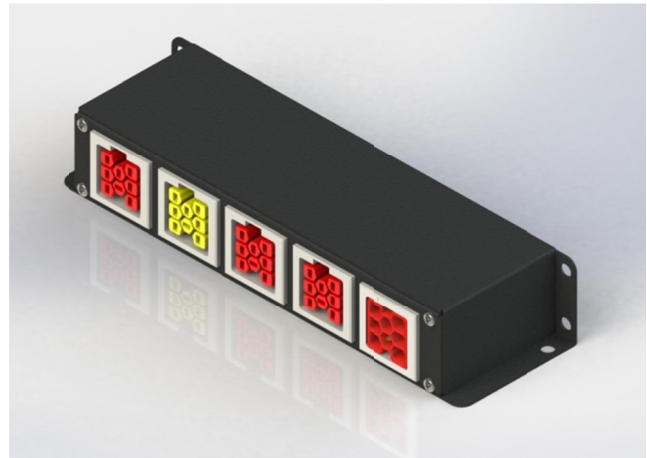
Delivers a convenient power tap or switch tap solution

Pre-wired enclosure provides cost-effective tap or switch tap option.

Converts single circuit input in to multiple, switched or unswitched legs.

Specifications

- Compact 1U height
- 16 gauge galvanized steel enclosure
- Integrated mounting brackets for flexible installation options
- Connectors are integrally moulded for superior strength and reliability.
- Mating connectors are self-latching and shrouded for added safety and protection.
- Uniquely-keyed, colour-coded mating connectors ensure safe, simple and error-free connectivity.
- Robust terminals deliver excellent electrical performance.
- Manufactured with Eco-Friendly Halogen-free RoHS-compliant materials.
- UL 183 and CSA 22.2 No 203.1 certified Manufactured Wiring System
- Approved for luminaire disconnect per NEC 410.73(g) and CEC Part 1 30-308(4)
- Acceptable for use in environmental air handling spaces per NEC 300-22(c) and CEC Part 1 12-010(3)



Ordering Information

Single Circuit Multi Tap

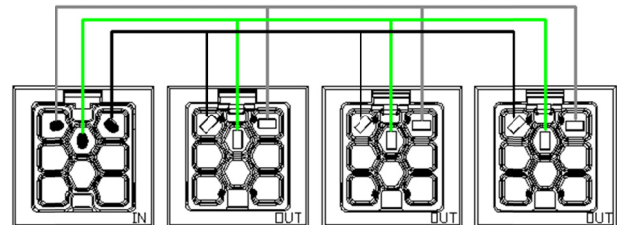
Cat No. 1H – **VC** – 1110 – B100203-M

Single Circuit Switch Multi Tap

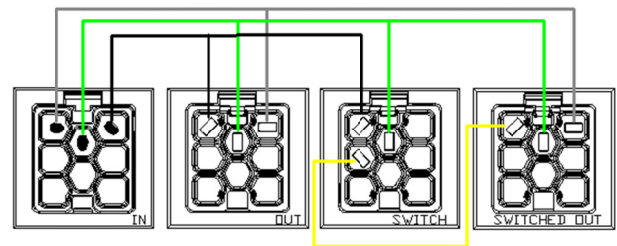
Cat No. 1H – **VC** – 1110 – B100203-W

where, **VC** System

- 22** = 125/250V 20A
- 2D** = 125/250V 20A + Control
- 42** = 277/480V 20A
- 4D** = 277/480V 20A + Control
- 62** = 347/600V 20A
- 6D** = 347/600V 20A + Control



Single Circuit Multi Tap (347/600V 20A shown)



Single Circuit Switch Multi Tap (347/600V 20A shown)

