

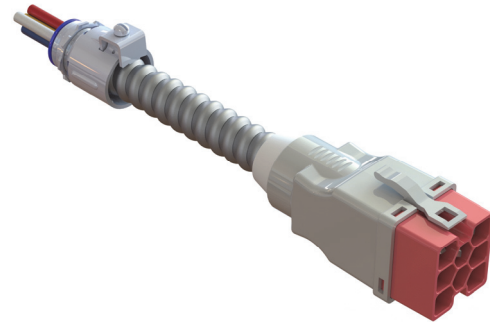
# Drop Cable

**Provides connection to devices such as receptacles, switches, floor boxes, furniture and light fixtures.**

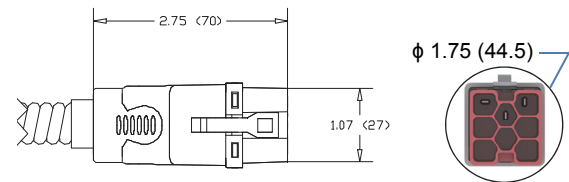
Power supply end has a male EZ-Wiring connector. Free end has prepared wires & snap-in connector for field connection to load.

## Features and Benefits:

- **ELECTEC EZ-Wiring®** components are UL Listed to be in compliance with UL 183 – Manufactured Wiring Systems (QQVX) and CSA Certified to be in compliance with CSA 22.2 No. 203-1 - Manufactured Wiring Systems.
- Constructed using **ULTRALX® MC/AC90\*** cable (300lbs Tension), minimum 12AWG stranded conductors rated 600V 20A.
- Robust terminal design exceeds 470Amp for 4 seconds.
- EZ-Wiring Connectors are integrally moulded (fully encapsulated) utilizing high impact Halogen-free, Eco-Friendly, Low Smoke, UL94-V0 rated, Oxygen Index - 33 %, RoHS-compliant polymers for superior strength, reliability and safety. Dielectric Withstand 3000Vac.
- Mating connectors are self-latching and shrouded for added protection.
- Uniquely-keyed and colour-coded to clearly indicate ratings and provide safe, simple, error-free connectivity. Only connectors having identical colours can plug together properly.
- Approved “Ballast Disconnect Means” per NEC 410.73(g) and CEC Part 1 30-308(4).
- Suitable for use in environmental air handling spaces (plenums) per NEC 300-22(c) and CEC Part 1 12-010(3)
- Acceptable for interrupting current (make or break) under full load.



Ultra-Compact, multiple applications  
Consult **EZ-Wiring®** Configuration Matrix



## Ordering Information

Catalogue No.; **1H – VC – LNGO – D III T**



**VC** System **22** = 125/250V 20A, **2D** = 125/250V 20A + Control,  
**42** = 277/480V 20A, **4D** = 277/480V 20A + Control,  
**62** = 347/600V 20A, **6D** = 347/600V 20A + Control

<b>LNGO</b> Application	<b>Power Distribution</b>	<b>Switch</b>	<b>DALI/Class 1 (Control Wiring)</b>
3w	<b>1110</b> = (L,N,G)	<b>1011</b> = 1P Switch	
4w	<b>2110</b> = (2L,N,G)	<b>1111</b> = Switch w/ Neutral	
4w	<b>1120</b> = (L,N,G,IG)	<b>1012</b> = 3, 4-Way Switch	
5w	<b>2210</b> = (2L,2N,G)	<b>1112</b> = 3, 4-Way Switch w/ Neutral	<b>1112</b> = 1 circuit + control (L,N,G,2C)
5w	<b>3110</b> = (3L,N,G)		
6w	<b>3120</b> = (3L,N,G,IG)		
6w	<b>2220</b> = (2L,2N,G,IG)		
7w	<b>3310</b> = (3L,3N,G)		<b>3112</b> = 3 circuit + control (3L,N,G,2C)
7w	<b>4210</b> = (4L,2N,G)		
8w	<b>3320</b> = (3L,3N,G,IG)		
8w	<b>4220</b> = (4L,2N,G,IG)		

**III** Cable Length in dm. e.g. **040** = 4.0m

**T** Cable Type **A** = #12AC90/MC\*, **B** = #12AC90, **N** = Upsized Neutrals\*, **U** = #10AC90/MC\*  
**H** = LSZH #12AC90/MC, **L** = LSZH Upsized Neutrals, **M** = LSZH #10AC90/MC

**Adhere to all Code requirements and carefully follow installation instructions**

